

# FORMERLY THE THE FORD PARTS WAREHOUSE

## PARTS & ACCESSORIES

1965 Full wheel cover 14" .....	ea.	\$ 28.00
1966 Full wheel cover .....	ea.	28.00
Spinner & blue center for 1965-66 wire wheel cover .....	ea.	24.50
1966 Trim ring for styled steel wheels .....	24.50	
1965-66 Red center for styled steel wheels .....	19.00	
1965-67 Lug nuts for styled steel wheels .....	ea.	3.00
1967 Trim ring for styled steel wheels .....	24.50	
1967 Blue center for styled steel wheels .....	11.50	
1967 Full wheel cover .....	26.00	
1968 Full wheel cover (plain center) .....	30.00	
1968 Full wheel cover (red center) .....	60.00	
1968 Trim ring for styled steel wheels .....	24.50	
1966 Chrome Hi-Po air cleaner .....	22.50	
1965-66 GT exhaust trumpets .....	pr.	150.00
1965-66 Chrome trim for GT trumpets .....	ea.	16.00
1965-68 GT or std. rear valance, specify yr. ....	58.00	
1965-66 Front bumper .....	120.00	
1965-66 Rear bumper .....	120.00	
1967-68 Front bumper .....	120.00	
1967-68 Rear bumper .....	120.00	
1965-66 Bumper guards (set of 4) .....	94.00	
1965-68 Front valance, specify year .....	78.00	
1965-66 Rocker panel molding .....	ea.	65.00
1967-68 Rocker panel molding .....	ea.	39.00
1965 Quarter panel ornament .....	21.00	
1966 Quarter panel ornament .....	23.00	
1965-66 Outside door handles .....	ea.	19.00
1967-68 Outside door handles .....	ea.	23.00
1965-66 Tail lamp bezels .....	ea.	17.25
1967-68 Tail lamp bezels .....	ea.	13.25
1965 Grille mesh, specify std. or GT .....	72.50	
1966 Grille .....	95.00	
1967 Grille .....	72.00	
1965-67 GT grille bars, specify year .....	pr.	135.00
1965-67 Fog light assemblies .....	ea.	65.00
1965 Grille ornament "Horse and Corral" .....	72.50	
1965 Grille bars, std. ....	ea.	28.00
1965-66 Fenders, specify year, side .....	ea.	230.00
1965-68 Coupe quarter panels, specify yr. ....	235.00	
1965-66 Convertible quarter panel .....	235.00	
1965-66 Fastback quarter panel .....	300.00	
1965-66 Dash bezel, woodgrain finish .....	52.00	
1967 Dash bezel, black .....	69.00	
1967 Dash bezel, brushed alum. ....	69.00	
1968 Dash bezel, black .....	69.00	
1968 Dash bezel, woodgrain .....	69.00	
1965 Dash pads (black, red, blue) .....	150.00	
1966 Dash pads (black, burgundy, blue) .....	150.00	
1965-66 Armrest pads, specify yr., color .....	ea.	24.00
1965-66 Chrome armrest bases .....	ea.	16.00
1967-68 Armrest pads, specify yr., color .....	ea.	30.00
1965-68 Fuel tank .....	98.00	
1965-66 Trunk mats, specify yr., body type .....	45.00	
1965-66 Steering wheel, black .....	98.00	
1965-67 Horn ring for woodgrain wheel .....	31.00	
1965-66 Parking lamp assembly .....	35.00	
1967-68 Parking lamp assembly .....	23.75	
1965-66 Back-up lamp assy, specify yr. ....	42.00	
1965-66 Ign door lock set w/2 pony keys .....	32.00	
1965-66 Step plates (specify body type) .....	pr.	38.00
1965-68 Accessory step lates (outer) .....	pr.	46.00
Cobra alum. valve covers, 260-302 .....	pr.	98.00
Cobra alum. valve covers, 351-428 .....	pr.	140.00
1965-66 Hood .....	290.00	
1967-68 Hood (specify year) .....	270.00	
1965-66 Radiator (specify engine) .....	165.00	
1965-68 Luggage rack (except fastback) .....	145.00	
1967 Antenna kit .....	60.00	
1965-66 Door edge guard kits .....	25.00	

## REPAIR PANELS

1965-66 Lower rear corner patch panel 7 1/2" height .....	22.00
1965-70 Lower rear corner patch panel, 12" height, specify year .....	31.00
1965-70 Rear wheel flair, specify yr. ....	36.00
1965-70 Rear frame rail .....	49.00
1965-66 Lower rear corner of front fender .....	27.00
1967-68 Lower rear corner of front fender .....	28.50
1965-70 Inner panel, lower rear qtr. ....	20.00
1965-68 Short frt. floor pan .....	per side 48.50
1965-68 Long frt. floor pan .....	per side 54.00
1965-68 Rear floor .....	per side 54.00
1965-70 Inner rear wheel Hsg. ....	65.00
1965-68 Outer wheel Hsg. specify ye. ....	65.00
1965-68 Conv. inner rocker panels .....	60.00
1965-68 Conv. torque boxes .....	65.00

## UPHOLSTERY 1965-68

(Specify Year and Color)

Complete set std. interior .....	185.00
Front buckets only .....	pr. 132.00
Complete set with bench front .....	225.00
Complete set 65-66 "Pony" Interior .....	270.00
Front buckets only .....	190.00
Door panels std. interior .....	pr. 89.95
"Pony" door skins .....	135.00

## MOLDED CARPET

All carpets molded and trimmed to fit your car just like the original. No cutting or fitting required.

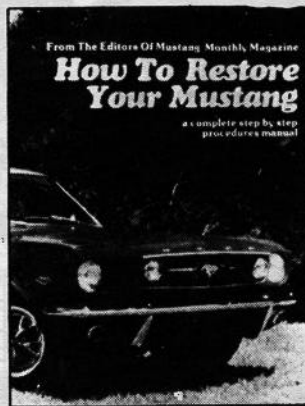
Coupes, convertibles, fastbacks, without fold down area .....	95.00
Fastbacks with fold down area .....	115.00

## ACCESSORY PONY MATS

Complete, set of four .....	45.00
Fronts only .....	30.00

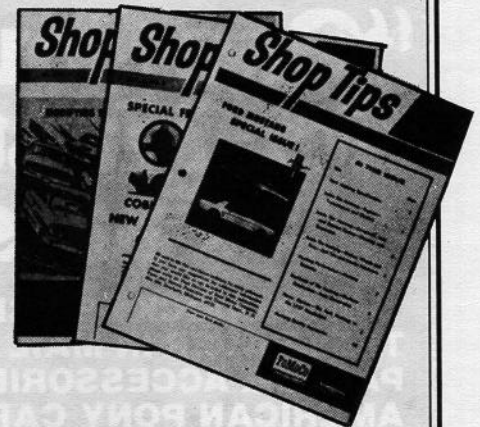
## SHOP MANUALS, LITERATURE, PARTS CATALOGS

'65-'68 .....	30.00
'65-'73 Owners manuals .....	6.00
Mustang Does It .....	27.50
'65-'72 Genuine Ford parts catalogs, loose leaf, gives illustrations and part numbers .....	70.00
1965-70 Factory Facts books, specify yr. ....	4.95



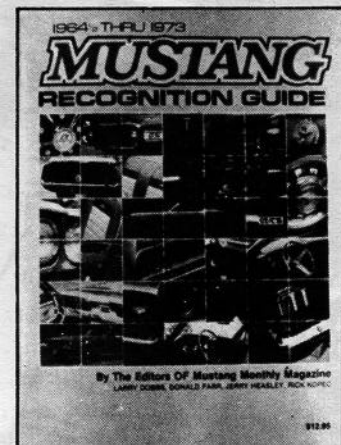
## HOW TO RESTORE YOUR MUSTANG

1965-68 Covers each phase of  
restoration in detail ..... \$14.95



## SHOP TIPS

Ford Parts Warehouse has reprinted 3 of Ford's Mustang-related SHOP TIPS publications. Volume 2, Number 4 is the special Mustang issue that introduced Mustang specifications to Ford service dealers. Volume 2, Number 2 (February 1964) describes the "Cobra Kits", and Volume 2, Number 6 includes a section on "Modifying Ford V-8s for High Performance". The superior quality reprints sell for \$4.50 each, PPD.



## MUSTANG RECOGNITION GUIDE

Compiled by the editors of Mustang Monthly, over  
300 photos in color ..... \$16.95

We also have a huge inventory of obsolete Ford Parts. If you don't see it listed call or write (SASE) for availability and price. Send \$2.00 for our 72-page catalog of Ford and Mustang Parts.

All parts are new unless noted. Please add 10% (\$2 minimum) for UPS except fenders, hoods and quarter panels will be shipped freight collect.

MasterCard and VISA accepted. Satisfaction guaranteed (30-day return)

## KING & WESLEY OBSOLETE PARTS, INC.

Courthouse Square, Liberty, KY 42539

PH: 606-787-5031