

FORMERLY THE THE FORD PARTS WAREHOUSE

PARTS & ACCESSORIES

1965 Full wheel cover 14"	ea.	\$ 26.00
1966 Full wheel cover	ea.	26.75
Spinner & blue center for 1965-66 wire wheel cover	ea.	24.50
1966 Trim ring for styled steel wheels		24.50
1965-66 Red center for styled steel wheels		17.00
1965-67 Lug nuts for styled steel wheels	ea.	3.00
1967 Trim ring for styled steel wheels		24.50
1967 Blue center for styled steel wheels		11.50
1967 Full wheel cover		24.00
1968 Full wheel cover (plain center)		30.00
1968 Full wheel cover (red center)		48.00
1968 Trim ring for styled steel wheels		24.50
1966 Chrome Hi-Po air cleaner		22.50
1965-66 GT exhaust trumpets	pr.	125.00
1965-66 Chrome trim for GT trumpets	ea.	16.00
1965-68 GT or std. rear valance, specify yr.		58.00
1965-66 Front bumper		120.00
1965-66 Rear bumper		120.00
1967-68 Front bumper		120.00
1967-68 Rear bumper		120.00
1965-66 Bumper guards (set of 4)		87.00
1965-68 Front valance, specify year		72.00
1965-66 Rocker panel molding	ea.	60.00
1967-68 Rocker panel molding	ea.	39.00
1965 Quarter panel ornament		19.90
1966 Quarter panel ornament		21.90
1965-66 Outside door handles	ea.	19.00
1967-68 Outside door handles	ea.	21.50
1965-66 Tail lamp bezels	ea.	17.25
1967-68 Tail lamp bezels	ea.	12.50
1965 Grille mesh, specify std. or GT		68.50
1966 Grille		95.00
1967 Grille		72.00
1965-67 GT grille bars, specify year	pr.	135.00
1965-67 Fog light assemblies	ea.	61.60
1965 Grille ornament "Horse and Corral"		68.75
1965 Grille bars, std.	ea.	26.00
1965-66 Fenders, specify year, side	ea.	200.00
1965-68 Coupe quarter panels, specify yr.		190.00
1965-66 Convertible quarter panel		190.00
1965-66 Fastback quarter panel		250.00
1965-66 Dash bezel, woodgrain finish		46.00
1967 Dash bezel, black		56.00
1967 Dash bezel, brushed alum.		56.00
1968 Dash bezel, black		56.00
1968 Dash bezel, woodgrain		56.00
1965 Dash pads (black, red, blue)		140.00
1966 Dash pads (black, burgundy, blue)		140.00
1965-66 Armrest pads, specify yr., color	ea.	20.00
1965-66 Chrome armrest bases	ea.	16.00
1967-68 Armrest pads, specify yr., color	ea.	27.00
1965-68 Fuel tank		90.00
1965-66 Trunk mats, specify yr., body type		45.00
1965-66 Steering wheel, black		78.00
1965-66 Horn ring for std. wheel		56.00
1965-67 Horn ring for woodgrain wheel		31.00
1965-66 Parking lamp assembly		35.00
1967-68 Parking lamp assembly		35.00
1965-66 Back-up lamp assy, specify yr.		42.00
1965-66 Ign door lock set w/2 pony keys		32.00
1965-66 Step plates (specify body type)	pr.	38.00
1965-68 Accessory step lates (outer)	pr.	46.00
Cobra alum. valve covers, 260-302	pr.	75.00
Cobra alum. valve covers, 351-428	pr.	110.00
1965-66 Hood		250.00
1967-68 Hood (specify year)		225.00
1965-66 Radiator (specify engine)		165.00
1965-68 Luggage rack (except fastback)		145.00
1967 Antenna kit		60.00
1965-66 Door edge guard kits		25.00

REPAIR PANELS

1965-66 Lower rear corner patch panel 7 1/2" height		22.00
1965-70 Lower rear corner patch panel, 12" height, specify year		31.00
1965-70 Rear wheel flair, specify yr.		36.00
1965-70 Rear frame rail		49.00
1965-66 Lower rear corner of front fender		27.00
1967-68 Lower rear corner of front fender		28.50
1965-70 Inner panel, lower rear qtr.		20.00
1965-68 Short frt. floor pan	per side	48.50
1965-68 Long frt. floor pan	per side	54.00
1965-68 Rear floor	per side	54.00
1965-70 Inner rear wheel Hsg.		65.00
1965-68 Outer wheel Hsg, specify ye.		65.00
1965-68 Conv. inner rocker panels		60.00
1965-68 Conv. torque boxes		65.00

UPHOLSTERY 1965-68 (Specify Year and Color)

Complete set std. interior		185.00
Front buckets only	pr.	132.00
Complete set with bench front		225.00
Complete set 65-66 "Pony" interior		270.00
Front buckets only		190.00
Door panels std. interior		52.00
"Pony" door skins		135.00

MOLDED CARPET

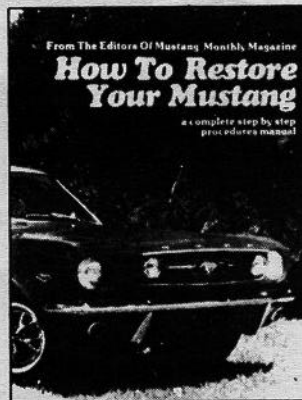
All carpets molded and trimmed to fit your car just like the original. No cutting or fitting required.			
Coupes, convertibles, fastbacks, without fold down area			95.00
Fastbacks with fold down area			115.00

ACCESSORY PONY MATS

Complete, set of four		45.00
Fronts only		30.00

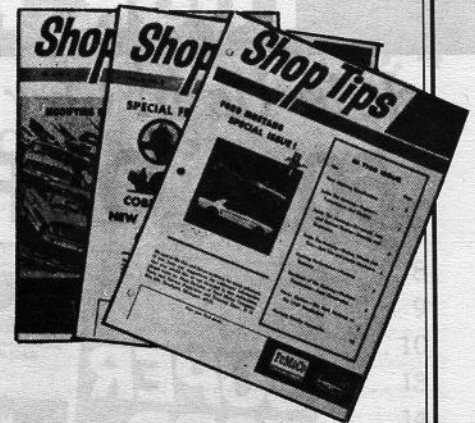
SHOP MANUALS, LITERATURE, PARTS CATALOGS

'65-'68, '70-'73 Shop manuals		25.00
'65-'73 Owners manuals		6.00
Mustang Does It		27.50
'65-'72 Genuine Ford parts catalogs, loose leaf, gives illustrations and part numbers		60.00
1965-70 Factory Facts books, specify yr.		4.95



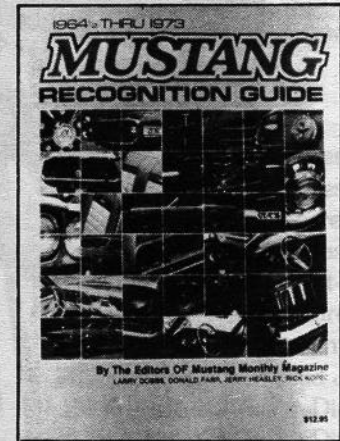
HOW TO RESTORE YOUR MUSTANG

1965-68 Covers each phase of
restoration in detail \$14.95



SHOP TIPS

Ford Parts Warehouse has reprinted 3 of Ford's Mustang-related SHOP TIPS publications. Volume 2, Number 4 is the special Mustang issue that introduced Mustang specifications to Ford service dealers. Volume 2, Number 2 (February 1964) describes the "Cobra Kits", and Volume 2, Number 6 includes a section on "Modifying Ford V-8s for High Performance". The superior quality reprints sell for \$4.50 each, PPD.



MUSTANG RECOGNITION GUIDE

Compiled by the editors of Mustang Monthly, over
300 photos in color \$16.95

We also have a huge inventory of obsolete Ford Parts. If you don't see it listed call or write (SASE) for availability and price. Send \$2.00 for our 72-page catalog of Ford and Mustang Parts. All parts are new unless noted. Please add 10% (\$2 minimum) for UPS except fenders, hoods and quarter panels will be shipped freight collect.

MasterCard and VISA accepted. Satisfaction guaranteed (30-day return)

DALE KING

Courthouse Square, Liberty, KY 42539

PH: 606-787-5031