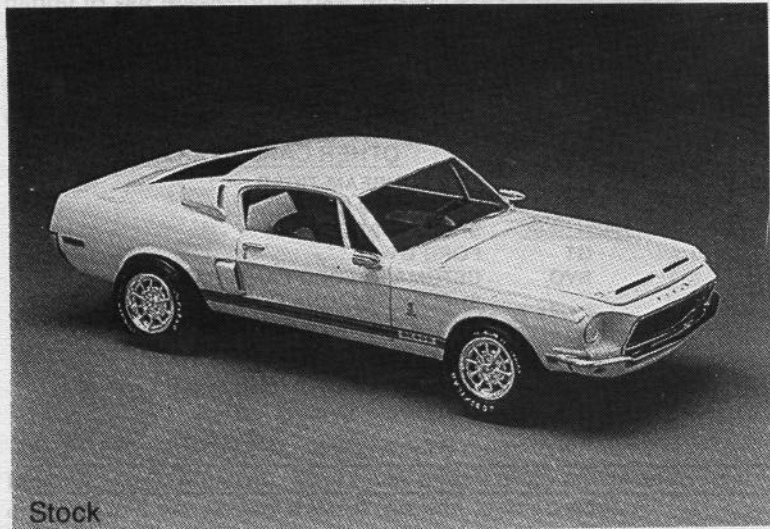


NEW PRODUCTS

OLDIES BUT GOODIES

Tires like the wide whitewall 6.00-16 diamond tread, popular from 1935 to 1941, and wide tread Polyglas tires of the early 1970s are among 13 types and sizes of tires for classic automobiles now being produced by Goodyear. The tires will be made by Goodyear in Argentina and sold exclusively by Kelsey Tire, Inc., of Camdenton, MO. For more information call toll free 1-800-325-0091.

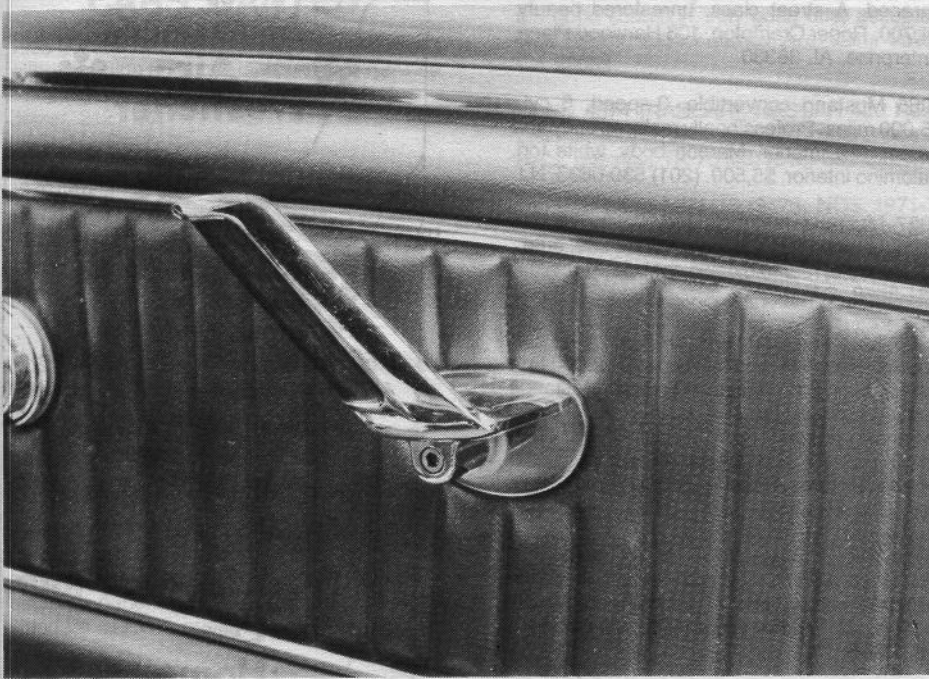
★ MCA approved



Stock

Attention Model Collectors!

Mustang Classic Collections has just announced a new model kit in stock. Brand new for 1986 is the AMT 1/25 scale 1968 Shelby Mustang G.T. 500. This 3 in 1 kit can be built stock, custom, or drag. Price is \$6.75 plus 50° shipping, USA residents only. Order from M.C.C., Inc., P.O. Box 539, Pine Lake, Georgia 30072-0539.



'65-'66 Mustang Stainless Steel Pony Door Panel Escutcheons

Finally an alternative to the plastic escutcheons behind the pony door handle, these high quality escutcheons are manufactured from durable stainless steel. They are polished to a chrome-like finish and hand waxed to retain this finish. A pair of thin nylon washers are included with each pair to install between the door handle and the escutcheon. Price is only \$14.95 per pair (add \$2.00 for shipping). Call or write: Virginia Mustang Supply, Inc., P.O. Box 487, Broadway, VA 22815. Phone: (703) 896-2695. Dealer inquiries invited.

Does your company have a new reproduction part for Mustangs? If so let us know and the Judging Committee will examine the product for MCA judging approval. Items approved as correct for judging purposes will be listed in the new products section as a service to our members.



NEW PRODUCT

Now available from New England Mustang Supply is a 1971-73 Monte Carlo bar which retails for \$22.00. Their 1985/86 catalog is also now available and is worth investigating. For additional information contact New England Mustang Supply, 4 Research Drive, Stratford, Connecticut 06497 or call (203) 377-6186.

