

FORMERLY THE THE FORD PARTS WAREHOUSE

PARTS & ACCESSORIES

| | |
|--|--------------|
| 1965 Full wheel cover 14" | ea. \$ 28.00 |
| 1966 Full wheel cover | ea. 28.00 |
| Spinner & blue center for 1965-66 wire wheel cover | ea. 24.50 |
| 1966 Trim ring for styled steel wheels | 24.50 |
| 1965-66 Red center for styled steel wheels | 19.00 |
| 1965-67 Lug nuts for styled steel wheels | ea. 3.00 |
| 1967 Trim ring for styled steel wheels | 24.50 |
| 1967 Blue center for styled steel wheels | 11.50 |
| 1967 Full wheel cover | 26.00 |
| 1968 Full wheel cover (plain center) | 30.00 |
| 1968 Full wheel cover (red center) | 60.00 |
| 1968 Trim ring for styled steel wheels | 24.50 |
| 1966 Chrome Hi-Po air cleaner | 22.50 |
| 1965-66 GT exhaust trumpets | pr. 150.00 |
| 1965-66 Chrome trim for GT trumpets | ea. 16.00 |
| 1965-68 GT or std. rear valance, specify yr. | 58.00 |
| 1965-66 Front bumper | 120.00 |
| 1965-66 Rear bumper | 120.00 |
| 1967-68 Front bumper | 120.00 |
| 1967-68 Rear bumper | 120.00 |
| 1965-66 Bumper guards (set of 4) | 94.00 |
| 1965-68 Front valance, specify year | 78.00 |
| 1965-66 Rocker panel molding | ea. 65.00 |
| 1967-68 Rocker panel molding | ea. 39.00 |
| 1965 Quarter panel ornament | 21.00 |
| 1966 Quarter panel ornament | 23.00 |
| 1965-66 Outside door handles | ea. 19.00 |
| 1967-68 Outside door handles | ea. 23.00 |
| 1965-66 Tail lamp bezels | ea. 17.25 |
| 1967-68 Tail lamp bezels | ea. 13.25 |
| 1965 Grille mesh, specify std. or GT | 72.50 |
| 1966 Grille | 95.00 |
| 1967 Grille | 72.00 |
| 1965-67 GT grille bars, specify year | pr. 135.00 |
| 1965-67 Fog light assemblies | ea. 65.00 |
| 1965 Grille ornament "Horse and Corral" | 72.50 |
| 1965 Grille bars, std. | ea. 28.00 |
| 1965-66 Fenders, specify year, side | ea. 230.00 |
| 1965-68 Coupe quarter panels, specify yr. | 235.00 |
| 1965-66 Convertible quarter panel | 235.00 |
| 1965-66 Fastback quarter panel | 300.00 |
| 1965-66 Dash bezel, woodgrain finish | 52.00 |
| 1967 Dash bezel, black | 69.00 |
| 1967 Dash bezel, brushed alum. | 69.00 |
| 1968 Dash bezel, black | 69.00 |
| 1968 Dash bezel, woodgrain | 69.00 |
| 1965 Dash pads (black, red, blue) | 150.00 |
| 1966 Dash pads (black, burgundy, blue) | 150.00 |
| 1965-66 Armrest pads, specify yr., color | ea. 24.00 |
| 1965-66 Chrome armrest bases | ea. 16.00 |
| 1967-68 Armrest pads, specify yr., color | ea. 30.00 |
| 1965-68 Fuel tank | 98.00 |
| 1965-66 Trunk mats, specify yr., body type | 45.00 |
| 1965-66 Steering wheel, black | 98.00 |
| 1965-67 Horn ring for woodgrain wheel | 31.00 |
| 1965-66 Parking lamp assembly | 35.00 |
| 1967-68 Parking lamp assembly | 23.75 |
| 1965-66 Back-up lamp assy, specify yr. | 42.00 |
| 1965-66 Ign door lock set w/2 pony keys | 32.00 |
| 1965-66 Step plates (specify body type) | pr. 38.00 |
| 1965-68 Accessory step lates (outer) | pr. 46.00 |
| Cobra alum. valve covers, 260-302 | pr. 98.00 |
| Cobra alum. valve covers, 351-428 | pr. 140.00 |
| 1965-66 Hood | 290.00 |
| 1967-68 Hood (specify year) | 270.00 |
| 1965-66 Radiator (specify engine) | 165.00 |
| 1965-68 Luggage rack (except fastback) | 145.00 |
| 1967 Antenna kit | 60.00 |
| 1965-66 Door edge guard kits | 25.00 |

REPAIR PANELS

| | |
|--|----------------|
| 1965-66 Lower rear corner patch panel 7 1/2" height | 22.00 |
| 1965-70 Lower rear corner patch panel, 12" height, specify year | 31.00 |
| 1965-70 Rear wheel flair, specify yr. | 36.00 |
| 1965-70 Rear frame rail | 49.00 |
| 1965-66 Lower rear corner of front fender | 27.00 |
| 1967-68 Lower rear corner of front fender | 28.50 |
| 1965-70 Inner panel, lower rear qtr. | 20.00 |
| 1965-68 Short frt. floor pan | per side 48.50 |
| 1965-68 Long frt. floor pan | per side 54.00 |
| 1965-68 Rear floor | per side 54.00 |
| 1965-70 Inner rear wheel Hsg. | 65.00 |
| 1965-68 Outer wheel Hsg, specify ye. | 65.00 |
| 1965-68 Conv. inner rocker panels | 60.00 |
| 1965-68 Conv. torque boxes | 65.00 |

UPHOLSTERY 1965-68 (Specify Year and Color)

| | |
|--|------------|
| Complete set std. interior | 185.00 |
| Front buckets only | pr. 132.00 |
| Complete set with bench front | 225.00 |
| Complete set 65-66 "Pony" interior | 270.00 |
| Front buckets only | 190.00 |
| Door panels std. interior | pr. 89.95 |
| "Pony" door skins | 135.00 |

MOLDED CARPET

All carpets molded and trimmed to fit your car just like the original. No cutting or fitting required.

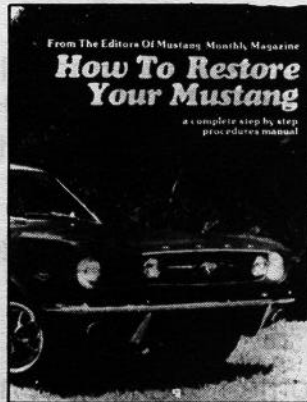
| | |
|--|--------|
| Coupes, convertibles, fastbacks, without fold down area | 95.00 |
| Fastbacks with fold down area | 115.00 |

ACCESSORY PONY MATS

| | |
|---------------------------------|-------|
| Complete, set of four | 45.00 |
| Fronts only | 30.00 |

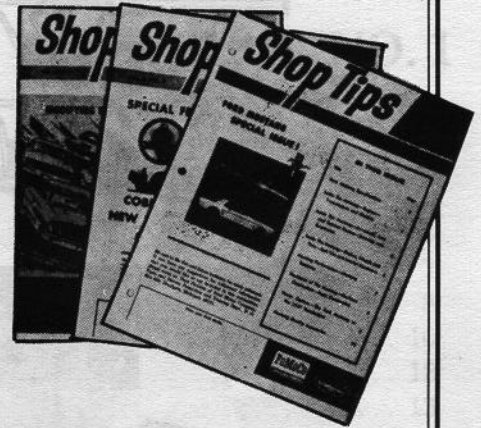
SHOP MANUALS, LITERATURE, PARTS CATALOGS

| | |
|--|-------|
| '65-'68 | 30.00 |
| '65-'73 Owners manuals | 6.00 |
| Mustang Does It | 27.50 |
| '65-'72 Genuine Ford parts catalogs, loose leaf, gives illustrations and part numbers | 70.00 |
| 1965-70 Factory Facts books, specify yr. | 4.95 |



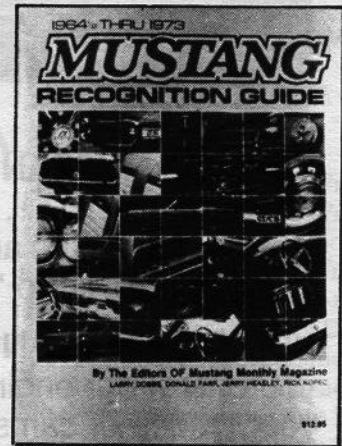
HOW TO RESTORE YOUR MUSTANG

1965-68 Covers each phase of
restoration in detail \$14.95



SHOP TIPS

Ford Parts Warehouse has reprinted 3 of Ford's Mustang-related SHOP TIPS publications. Volume 2, Number 4 is the special Mustang issue that introduced Mustang specifications to Ford service dealers. Volume 2, Number 2 (February 1964) describes the "Cobra Kits", and Volume 2, Number 6 includes a section on "Modifying Ford V-8s for High Performance". The superior quality reprints sell for \$4.50 each, PPD.



MUSTANG RECOGNITION GUIDE

Compiled by the editors of Mustang Monthly, over
300 photos in color \$16.95

We also have a huge inventory of obsolete Ford Parts. If you don't see it listed call or write (SASE) for availability and price. Send \$2.00 for our 72-page catalog of Ford and Mustang Parts.

All parts are new unless noted. Please add 10% (\$2 minimum) for UPS except fenders, hoods and quarter panels will be shipped freight collect.

MasterCard and VISA accepted. Satisfaction guaranteed (30-day return)

KING & WESLEY OBSOLETE PARTS, INC.

Courthouse Square, Liberty, KY 42539

PH: 606-787-5031