

FORMERLY THE THE FORD PARTS WAREHOUSE

PARTS & ACCESSORIES

1965 Full wheel cover 14"	ea.	\$ 28.00
1966 Full wheel cover	ea.	28.00
Spinner & blue center for 1965-66 wire wheel cover	ea.	24.50
1966 Trim ring for styled steel wheels	ea.	24.50
1965-66 Red center for styled steel wheels	ea.	19.00
1965-67 Lug nuts for styled steel wheels	ea.	3.00
1967 Trim ring for styled steel wheels	ea.	24.50
1967 Blue center for styled steel wheels	ea.	11.50
1967 Full wheel cover	ea.	26.00
1968 Full wheel cover (plain center)	ea.	30.00
1968 Full wheel cover (red center)	ea.	60.00
1968 Trim ring for styled steel wheels	ea.	24.50
1966 Chrome Hi-Po air cleaner	ea.	22.50
1965-66 GT exhaust trumpets	pr.	150.00
1965-66 Chrome trim for GT trumpets	ea.	16.00
1965-68 GT or std. rear valance, specify yr.	ea.	58.00
1965-66 Front bumper	ea.	120.00
1965-66 Rear bumper	ea.	120.00
1967-68 Front bumper	ea.	120.00
1967-68 Rear bumper	ea.	120.00
1965-66 Bumper guards (set of 4)	ea.	94.00
1965-68 Front valance, specify year	ea.	78.00
1965-66 Rocker panel molding	ea.	65.00
1967-68 Rocker panel molding	ea.	39.00
1965 Quarter panel ornament	ea.	21.00
1966 Quarter panel ornament	ea.	23.00
1965-66 Outside door handles	ea.	19.00
1967-68 Outside door handles	ea.	23.00
1965-66 Tail lamp bezels	ea.	17.25
1967-68 Tail lamp bezels	ea.	13.25
1965 Grille mesh, specify std. or GT	ea.	72.50
1966 Grille	ea.	95.00
1967 Grille	ea.	72.00
1965-67 GT grille bars, specify year	pr.	135.00
1965-67 Fog light assemblies	ea.	65.00
1965 Grille ornament "Horse and Corral"	ea.	72.50
1965 Grille bars, std.	ea.	28.00
1965-66 Fenders, specify year, side	ea.	230.00
1965-68 Coupe quarter panels, specify yr.	ea.	235.00
1965-66 Convertible quarter panel	ea.	235.00
1965-66 Fastback quarter panel	ea.	300.00
1965-66 Dash bezel, woodgrain finish	ea.	52.00
1967 Dash bezel, black	ea.	69.00
1966 Dash bezel, brushed alum.	ea.	69.00
1968 Dash bezel, black	ea.	69.00
1968 Dash bezel, woodgrain	ea.	69.00
1965 Dash pads (black, red, blue)	ea.	150.00
1966 Dash pads (black, burgundy, blue)	ea.	150.00
1965-66 Armrest pads, specify yr., color	ea.	24.00
1965-66 Chrome armrest bases	ea.	16.00
1967-68 Armrest pads, specify yr., color	ea.	30.00
1965-68 Fuel tank	ea.	98.00
1965-66 Trunk mats, specify yr., body type	ea.	45.00
1965-66 Steering wheel, black	ea.	98.00
1965-67 Horn ring for woodgrain wheel	ea.	31.00
1965-66 Parking lamp assembly	ea.	35.00
1967-68 Parking lamp assembly	ea.	23.75
1965-66 Back-up lamp assy, specify yr.	ea.	42.00
1965-66 Ign door lock set w/2 pony keys	ea.	32.00
1965-66 Step plates (specify body type)	pr.	38.00
1965-68 Accessory step lates (outer)	pr.	46.00
Cobra alum. valve covers, 260-302	pr.	98.00
Cobra alum. valve covers, 351-428	pr.	140.00
1965-66 Hood	ea.	290.00
1967-68 Hood (specify year)	ea.	270.00
1965-66 Radiator (specify engine)	ea.	165.00
1965-68 Luggage rack (except fastback)	ea.	145.00
1967 Antenna kit	ea.	60.00
1965-66 Door edge guard kits	ea.	25.00

REPAIR PANELS

1965-66 Lower rear corner patch panel	
7 1/2" height	22.00
1965-70 Lower rear corner patch panel,	
12" height, specify year	31.00
1965-70 Rear wheel flair, specify yr.	36.00
1965-70 Rear frame rail	49.00
1965-66 Lower rear corner of front fender	27.00
1967-68 Lower rear corner of front fender	28.50
1965-70 Inner panel, lower rear qtr.	20.00
1965-68 Short frt. floor pan	per side 48.50
1965-68 Long frt. floor pan	per side 54.00
1965-68 Rear floor	per side 54.00
1965-70 Inner rear wheel Hsg.	65.00
1965-68 Outer wheel Hsg. specify ya.	65.00
1965-68 Conv. inner rocker panels	60.00
1965-68 Conv. torque boxes	65.00

UPHOLSTERY 1965-68

(Specify Year and Color)

Complete set std. interior	185.00
Front buckets only	pr. 132.00
Complete set with bench front	225.00
Complete set 65-66 "Pony" Interior	270.00
Front buckets only	190.00
Door panels std. interior	pr. 89.95
"Pony" door skins	135.00

MOLDED CARPET

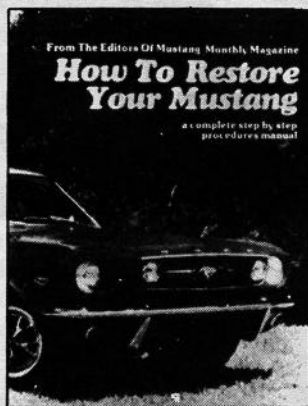
All carpets molded and trimmed to fit your car just like the original. No cutting or fitting required.	
Coupes, convertibles, fastbacks, without	
fold down area	95.00
Fastbacks with fold down area	115.00

ACCESSORY PONY MATS

Complete, set of four	45.00
Fronts only	30.00

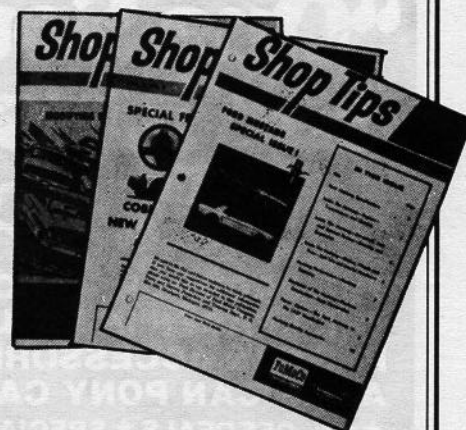
SHOP MANUALS, LITERATURE, PARTS CATALOGS

'65-'68	30.00
'65-'73 Owners manuals	6.00
Mustang Does It	27.50
'65-'72 Genuine Ford parts catalogs, loose leaf, gives illustrations and part numbers	70.00
1965-70 Factory Facts books, specify yr.	4.95



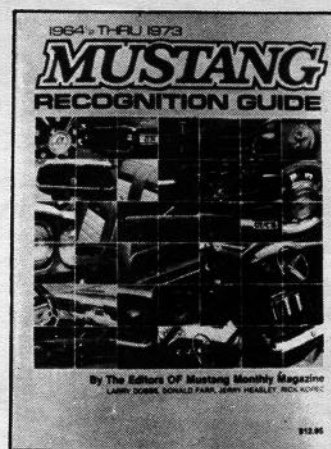
HOW TO RESTORE YOUR MUSTANG

1965-68 Covers each phase of restoration in detail \$14.95



SHOP TIPS

Ford Parts Warehouse has reprinted 3 of Ford's Mustang-related SHOP TIPS publications. Volume 2, Number 4 is the special Mustang issue that introduced Mustang specifications to Ford service dealers. Volume 2, Number 2 (February 1964) describes the "Cobra Kits", and Volume 2, Number 6 includes a section on "Modifying Ford V-8s for High Performance". The superior quality reprints sell for \$4.50 each, PPD.



MUSTANG RECOGNITION GUIDE

Compiled by the editors of Mustang Monthly, over 300 photos in color \$16.95

We also have a huge inventory of obsolete Ford Parts. If you don't see it listed call or write (SASE) for availability and price. Send \$2.00 for our 72-page catalog of Ford and Mustang Parts.

All parts are new unless noted. Please add 10% (\$2 minimum) for UPS except fenders, hoods and quarter panels will be shipped freight collect.

MasterCard and VISA accepted. Satisfaction guaranteed (30-day return)

KING & WESLEY OBSOLETE PARTS, INC.

Courthouse Square, Liberty, KY 42539

PH: 606-787-5031