

# FORMERLY THE THE FORD PARTS WAREHOUSE

## PARTS & ACCESSORIES

|  |     |          |
|--|-----|----------|
| 1965 Full wheel cover 14" . . . . .                          | ea. | \$ 28.00 |
| 1966 Full wheel cover . . . . .                              | ea. | 28.00    |
| Spinner & blue center for 1965-66 wire wheel cover . . . . . | ea. | 24.50    |
| 1966 Trim ring for styled steel wheels . . . . .             | ea. | 24.50    |
| 1965-66 Red center for styled steel wheels . . . . .         | ea. | 19.00    |
| 1965-67 Lug nuts for styled steel wheels . . . . .           | ea. | 3.00     |
| 1967 Trim ring for styled steel wheels . . . . .             | ea. | 24.50    |
| 1967 Blue center for styled steel wheels . . . . .           | ea. | 11.50    |
| 1967 Full wheel cover . . . . .                              | ea. | 26.00    |
| 1968 Full wheel cover (plain center) . . . . .               | ea. | 30.00    |
| 1968 Full wheel cover (red center) . . . . .                 | ea. | 60.00    |
| 1968 Trim ring for styled steel wheels . . . . .             | ea. | 24.50    |
| 1966 Chrome Hi-Po air cleaner . . . . .                      | ea. | 22.50    |
| 1965-66 GT exhaust trumpets . . . . .                        | pr. | 150.00   |
| 1965-66 Chrome trim for GT trumpets . . . . .                | ea. | 16.00    |
| 1965-68 GT or std. rear valance, specify yr. . . . .         | ea. | 58.00    |
| 1965-66 Front bumper . . . . .                               | ea. | 120.00   |
| 1965-66 Rear bumper . . . . .                                | ea. | 120.00   |
| 1967-68 Front bumper . . . . .                               | ea. | 120.00   |
| 1967-68 Rear bumper . . . . .                                | ea. | 120.00   |
| 1965-66 Bumper guards (set of 4) . . . . .                   | ea. | 94.00    |
| 1965-68 Front valance, specify year . . . . .                | ea. | 78.00    |
| 1965-66 Rocker panel molding . . . . .                       | ea. | 65.00    |
| 1967-68 Rocker panel molding . . . . .                       | ea. | 39.00    |
| 1965 Quarter panel ornament . . . . .                        | ea. | 21.00    |
| 1966 Quarter panel ornament . . . . .                        | ea. | 23.00    |
| 1965-66 Outside door handles . . . . .                       | ea. | 19.00    |
| 1967-68 Outside door handles . . . . .                       | ea. | 23.00    |
| 1965-66 Tail lamp bezels . . . . .                           | ea. | 17.25    |
| 1967-68 Tail lamp bezels . . . . .                           | ea. | 13.25    |
| 1965 Grille mesh, specify std. or GT . . . . .               | ea. | 72.50    |
| 1966 Grille . . . . .  | ea. | 95.00    |
| 1967 Grille . . . . .  | ea. | 72.00    |
| 1965-67 GT grille bars, specify year . . . . .               | pr. | 135.00   |
| 1965-67 Fog light assemblies . . . . .                       | ea. | 65.00    |
| 1965 Grille ornament "Horse and Corral" . . . . .            | ea. | 72.50    |
| 1965 Grille bars, std. . . . .                               | ea. | 28.00    |
| 1965-66 Fenders, specify year, side . . . . .                | ea. | 230.00   |
| 1965-68 Coupe quarter panels, specify yr. . . . .            | ea. | 235.00   |
| 1965-66 Convertible quarter panel . . . . .                  | ea. | 235.00   |
| 1965-66 Fastback quarter panel . . . . .                     | ea. | 300.00   |
| 1965-66 Dash bezel, woodgrain finish . . . . .               | ea. | 52.00    |
| 1967 Dash bezel, black . . . . .                             | ea. | 69.00    |
| 1967 Dash bezel, brushed alum. . . . .                       | ea. | 69.00    |
| 1968 Dash bezel, black . . . . .                             | ea. | 69.00    |
| 1968 Dash bezel, woodgrain . . . . .                         | ea. | 69.00    |
| 1965 Dash pads (black, red, blue) . . . . .                  | ea. | 150.00   |
| 1966 Dash pads (black, burgundy, blue) . . . . .             | ea. | 150.00   |
| 1965-66 Armrest pads, specify yr., color . . . . .           | ea. | 24.00    |
| 1965-66 Chrome armrest bases . . . . .                       | ea. | 16.00    |
| 1967-68 Armrest pads, specify yr., color . . . . .           | ea. | 30.00    |
| 1965-68 Fuel tank . . . . .                                  | ea. | 98.00    |
| 1965-66 Trunk mats, specify yr., body type . . . . .         | ea. | 45.00    |
| 1965-66 Steering wheel, black . . . . .                      | ea. | 98.00    |
| 1965-67 Horn ring for woodgrain wheel . . . . .              | ea. | 31.00    |
| 1965-66 Parking lamp assembly . . . . .                      | ea. | 35.00    |
| 1967-68 Parking lamp assembly . . . . .                      | ea. | 23.75    |
| 1965-66 Back-up lamp assy, specify yr. . . . .               | ea. | 42.00    |
| 1965-66 Ign door lock set w/2 pony keys . . . . .            | ea. | 32.00    |
| 1965-66 Step plates (specify body type) . . . . .            | pr. | 38.00    |
| 1965-68 Accessory step lates (outer) . . . . .               | pr. | 46.00    |
| Cobra alum. valve covers, 260-302 . . . . .                  | pr. | 98.00    |
| Cobra alum. valve covers, 351-428 . . . . .                  | pr. | 140.00   |
| 1965-66 Hood . . . . .                                       | ea. | 290.00   |
| 1967-68 Hood (specify year) . . . . .                        | ea. | 270.00   |
| 1965-66 Radiator (specify engine) . . . . .                  | ea. | 165.00   |
| 1965-68 Luggage rack (except fastback) . . . . .             | ea. | 145.00   |
| 1967 Antenna kit . . . . .                                   | ea. | 60.00    |
| 1965-66 Door edge guard kits . . . . .                       | ea. | 25.00    |

## REPAIR PANELS

|  |                |
|--|----------------|
| 1965-66 Lower rear corner patch panel<br>7 1/2" height . . . . .             | 22.00          |
| 1965-70 Lower rear corner patch panel,<br>12" height, specify year . . . . . | 31.00          |
| 1965-70 Rear wheel flair, specify yr. . . . .                                | 36.00          |
| 1965-70 Rear frame rail . . . . .  | 49.00          |
| 1965-66 Lower rear corner of front fender . . . . .                          | 27.00          |
| 1967-68 Lower rear corner of front fender . . . . .                          | 28.50          |
| 1965-70 Inner panel, lower rear qtr. . . . .                                 | 20.00          |
| 1965-68 Short frt. floor pan . . . . .                                       | per side 48.50 |
| 1965-68 Long frt. floor pan . . . . .  | per side 54.00 |
| 1965-68 Rear floor . . . . .   | per side 54.00 |
| 1965-70 Inner rear wheel Hsg. . . . .  | 65.00          |
| 1965-68 Outer wheel Hsg. specify ye. . . . .                                 | 65.00          |
| 1965-68 Conv. inner rocker panels . . . . .                                  | 60.00          |
| 1965-68 Conv. torque boxes . . . . .   | 65.00          |

## UPHOLSTERY 1965-68

(Specify Year and Color)

|  |           |
|--|-----------|
| Complete set std. interior . . . . .         | 185.00    |
| Front buckets only . . . . .                 | 132.00    |
| Complete set with bench front . . . . .      | 225.00    |
| Complete set 65-66 "Pony" Interior . . . . . | 270.00    |
| Front buckets only . . . . .                 | 190.00    |
| Door panels std. interior . . . . .          | pr. 89.95 |
| "Pony" door skins . . . . .                  | 135.00    |

## MOLDED CARPET

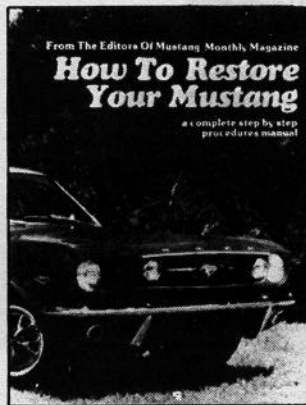
|  |        |
|--|--------|
| All carpets molded and trimmed to fit your car just like the original. No cutting or fitting required. |        |
| Coupes, convertibles, fastbacks, without<br>fold down area . . . . .                                   | 95.00  |
| Fastbacks with fold down area . . . . .  | 115.00 |

## ACCESSORY PONY MATS

|                                 |       |
|---------------------------------|-------|
| Complete, set of four . . . . . | 45.00 |
| Fronts only . . . . .           | 30.00 |

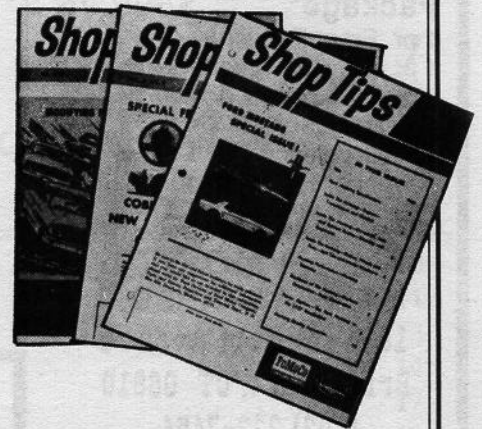
## SHOP MANUALS, LITERATURE, PARTS CATALOGS

|  |       |
|--|-------|
| '65-'68 . . . . .  | 30.00 |
| '65-'73 Owners manuals . . . . .   | 6.00  |
| Mustang Does It . . . . .  | 27.50 |
| '65-'72 Genuine Ford parts catalogs, loose leaf,<br>gives illustrations and part numbers . . . . . | 70.00 |
| 1965-70 Factory Facts books, specify yr. . . . .   | 4.95  |



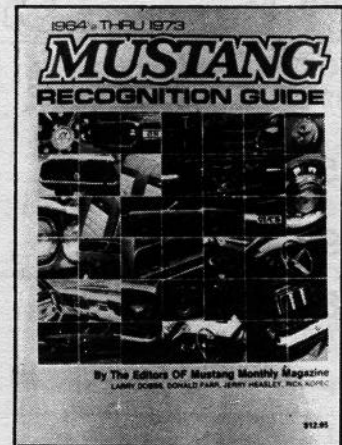
## HOW TO RESTORE YOUR MUSTANG

1965-68 Covers each phase of  
restoration in detail . . . . . \$14.95



## SHOP TIPS

Ford Parts Warehouse has reprinted 3 of Ford's Mustang-related SHOP TIPS publications. Volume 2, Number 4 is the special Mustang issue that introduced Mustang specifications to Ford service dealers. Volume 2, Number 2 (February 1964) describes the "Cobra Kits", and Volume 2, Number 6 includes a section on "Modifying Ford V-8s for High Performance". The superior quality reprints sell for \$4.50 each, PPD.



## MUSTANG RECOGNITION GUIDE

Compiled by the editors of Mustang Monthly, over  
300 photos in color . . . . . \$16.95

We also have a huge inventory of obsolete Ford Parts. If you don't see it listed call or write (SASE) for availability and price. Send \$2.00 for our 72-page catalog of Ford and Mustang Parts. All parts are new unless noted. Please add 10% (\$2 minimum) for UPS except fenders, hoods and quarter panels will be shipped freight collect.

MasterCard and VISA accepted. Satisfaction guaranteed (30-day return)

# KING & WESLEY OBSOLETE PARTS, INC.

Courthouse Square, Liberty, KY 42539

PH: 606-787-5031