



*Over 50 Mustangs were present for this annual event.*

## THE CAROLINA REGIONAL MUSTANG RALLY

by Fred Young

Young Ford, Inc. in uptown Charlotte, North Carolina was the site for the Carolina Regional Mustang Club's annual show and rally on Saturday, May 2nd.

Our club decided to call this a Mustang rally rather than a show. We did this hoping to attract all local Mustangers, not just those people with strictly show cars. By doing this we also hoped to recruit new members and we succeeded; seven new members joined our organization! The rally was open to all classes, 1964½ through 1987. Some fifty cars were present, 30 of which were in competition. This was a people's choice event so there was no strict judging. The winners are:

### Class A 1964½-68

- 1st Steve Soddreth & Denise Halbach (tie)
- 2nd John Woodruff & Larry Morgan (tie)

### Class B 1969-70

- 1st Veronica Byers
- 2nd Steve Cox

### Class C 1971-73

- 1st Bill Dewitt
- 2nd Don Raborn

### Class D 1974-79

No entries

### Class E 1980 & up

- 1st Chris Zeigler
- 2nd Ab Sides

We also held a raffle with tickets selling for \$1.00 each. The prizes were ½ of the money raised by the raffle and a Mustang jacket donated by Pete Conder.

*Here's an early production 1967 Shelby. Notice the small round light on the upper side scoop.*



*Veronica Byers' 1969 Mach I.*



# REGIONAL GROUP NEWS

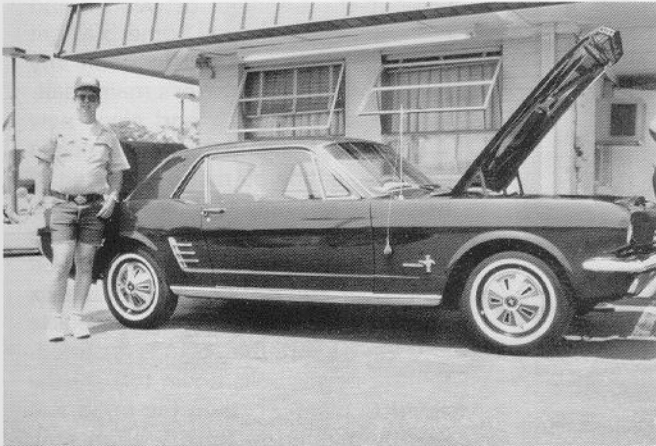
The sun was on our side all day. There was plenty of cheer, soft drinks and popcorn for everyone. The show adjourned around 4:00 p.m. and at 4:30 a storm hit you would not have believed. We had hail the size of quarters!

Those of us left cleaning up rushed our cars into the service area for safe keeping. It was a close call but overall we had a fantastic time.

Special thanks to the folks at Young Ford, Inc. and all our participants. Keep on Mustanging!

MT

Steve Suddreth and his 1966 coupe.



Fred Young and his 1965 convertible.





## Mustang Headquarters





**1965-1969  
UPHOLSTERY**





**1965-66 CLEAR COUPE DOOR GLASS**  
1965-66 NOS coupe door glass with minor imperfections (tiny blemishes in glass or scratches in stainless steel). Clear only . . . . . 35.00 each

	Standard	Pony
1 Front Bucket . . .	67.50	89.95
2 Front Buckets	129.95	149.95
Complete Set . . .	179.95	239.95
Front Bench . . .	149.95	—
Complete Set . . .	199.95	—
Rear Seat Only . . .	104.95	134.95



**Molded Carpets**  
Available in all colors

**\$105.00**  
Add 22.00 for  
*fold down*  
*area*



**Convertible Top Side Cables**, specify type . . . 29.95 pair  
**Convertible Top Hydraulic Hose with Fittings** . . . 39.95

**Convertible Top Weatherstrip Kit**

1965-68 . . . . 94.95/set



**Headliners** in correct grain available in most colors . . . . . 35.95

**Trunk Mats** in plaid or speckled design . . . . . 19.95

**Spare Tire Covers** in speckled design . . . . . 11.95

**Arm Rest Pad,**  
65/66 . . . . . 12.95  
67 . . . . . 19.95  
68 . . . . . 24.50

**Chrome Arm Rest Base**  
65/66 . . . . . 10.95



Padded	Dashes
1965-66 . . . . .	170.15
1967-68 . . . . .	189.95



1965 Standard Door Panel . . . . . 99.50/pair  
Glove Box, Compartment 65/66 . . . . . 11.00  
Window, Regulator 65/66 . . . . . 44.95

To order parts use our toll-free phone numbers. To order your **free** catalog please write and include \$1.00 for postage and handling or can be shipped free with order.

**Mustang Headquarters**  
1080 Detroit Ave., Concord, CA 94518  
800-227-2174 - In Calif. 800-642-2405