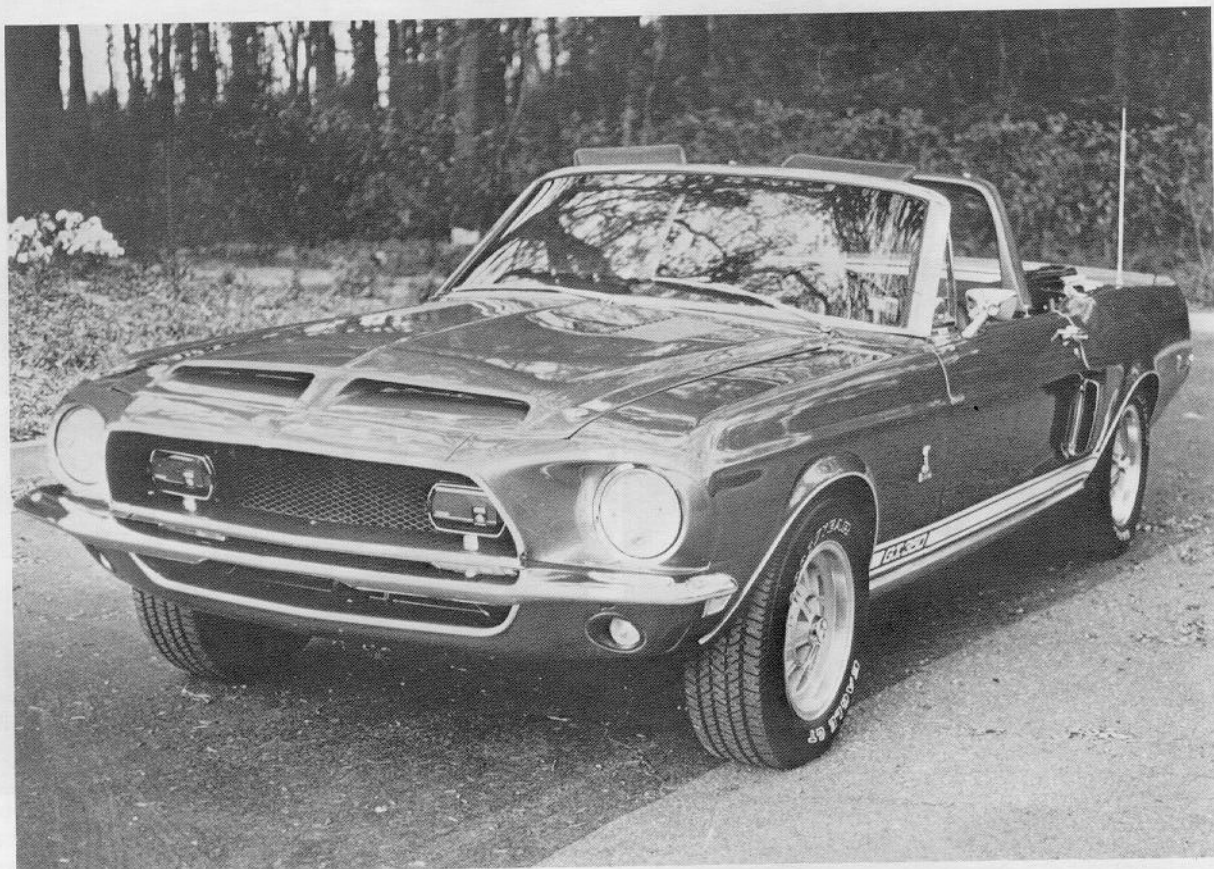


# Don Perry's **SUPER** Shelby



by Teresa Vickery  
photos by Brad Bowling

**M**ore powerful than a locomotive, faster than a speeding bullet, commonly seen with its top down — it's Super Shelby!

This 1968 GT350 convertible is proudly maintained by Don Perry of Kennesaw, Georgia, who is no stranger to Shelby performance. Don's first Mustang was a white 1968 Shelby GT350 fastback; during their seven years together, the white fastback won so many trophies in the street-driven class that Don considered adding on to his house.

After reading about the convertible in *Hemmings Motor News* Don's interest led him to the Shelby's Texas home; besides the beautiful lines of the car, the idea of owning such a collector's item greatly appealed to him.

What makes this Acapulco Blue Shelby so rare? Under the hood lies a Paxton supercharger boosting the stock 302's output to an estimated 425 horses. Our roads are still graced by a few 1968 GT350 convertibles, but Shelby experts estimate that fewer than ten came equipped with a Paxton supercharger.

After bringing the car home from Houston, Texas, work began to fine-tune the recent restoration. No detail was overlooked as preparations were

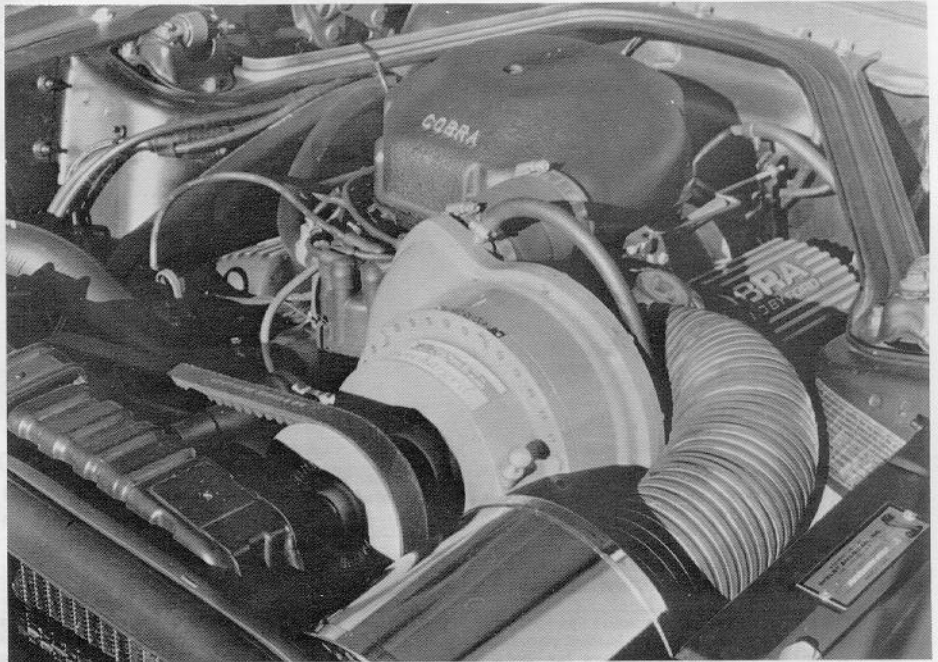
made for the convertible's first showing in Pensacola, Florida, last year. The winning of a first place trophy at this event was the signal of things to come. Don now has several more trophies to add to the collection.

The 350's black deluxe interior includes a tilt/swing-away steering



wheel, 8,000 rpm tachometer, 140 mph speedometer, woodgrain inserts, AM/FM radio, and rollbar. The four-speed transmission is coupled with a 3.89:1 rearend which feeds power to the Goodyear Eagle GTs and Shelby ten-spoke wheels.

Don believes in driving and enjoying his Mustangs every chance he gets. This means his super Shelby is seen traveling to shows and events under its own (supercharged) power — no trailers needed for this beauty.



MT

WINTER

# ALAMO'S Association Membership Program

**Pontiac Grand Am  
or similar Midsize Car**

**\$25<sup>95</sup> A DAY** Call  
**\$119<sup>95</sup>** Alamo  
for Details.

5-7 DAY RENTAL  
**For Reservations:**

- Call Toll Free 1-800-732-3232
- Request Plan Code "BY"
- You Must use your Association ID Number

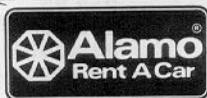
**Alamo Locations:**

Albuquerque	Houston	Orange County
Anchorage	Jacksonville	Orlando
Atlanta	Kansas City	Palm Springs
Austin	Kauai/ Lihue	Phoenix
Baltimore	Key West	Pittsburgh
Boston	Las Vegas	Portland
Burbank	Los Angeles	Reno
Charleston, SC	Mau/Kahului	Salt Lake City
Charlotte	Melbourne	San Antonio
Chicago	Memphis	San Diego
Cincinnati	Miami	San Francisco
Clearwater	Milwaukee	San Jose
Cleveland	Minneapolis	Sarasota
Dallas/Ft. Worth	N. Miami Beach	Savannah
Daytona Beach	Nashville	Seattle
Denver	New Orleans	Tallahassee
Detroit	Norfolk	Tampa
El Paso	Oahu/Honolulu	Tucson
Ft. Lauderdale	Oahu/Waikiki	Tulsa
Ft. Myers	Oakland	Washington, D.C.
Hawaii/Hilo	Oklahoma City	West Maui
Hawaii/Kona	Ontario, CA	West Palm Beach

**Unlimited Free Mileage**

Fully Equipped Model:	NATIONWIDE		FLA. & HAWAII	
	Daily	Weekly	Daily	Weekly
Economy	\$28	\$99 <sup>95</sup>	\$22	\$79 <sup>95</sup>
Compact	\$30	\$119 <sup>95</sup>	\$24	\$89 <sup>95</sup>
Midsize	\$32	\$139 <sup>95</sup>	\$26	\$99 <sup>95</sup>
Standard	\$34	\$159 <sup>95</sup>	\$28	\$119 <sup>95</sup>
Luxury	\$35	\$199 <sup>95</sup>	\$32	\$159 <sup>95</sup>

Basic rates do not include: one-time fuel service charge of \$11.95 for 1/2 tank minimum or \$6.50 fuel service charge credit available for those rentals of two (2) days or less and 50 miles or less; tax; optional Collision Damage Waiver or Personal Accident Insurance; Association Members receive a \$3,000 deductible should Collision Damage Waiver be declined. Similar or larger car may be substituted. One-way drop charges may apply. Standard rental requirements apply. Surcharges will apply during peak periods. Prices subject to change without notice. 24-hour advance reservations required or higher rate may apply. Rates subject to change with 30 days notice. Rates quoted are for 2 door models. 4 door cars slightly higher. Rates valid through June 30, 1988.



Alamo features fine General Motors cars such as the Pontiac Grand Am.

## FREE UPGRADE COUPON

One Category — Example: Compact to Midsize

- Valid January 2 – March 31, 1988
- Must be in conjunction with "BY" Rates
- Limit one coupon per rental
- Valid for Compact car or higher
- Blackout periods do apply
- Not valid in Florida, Hawaii, Denver, Salt Lake City, Reno

I.D. # 93058

ALAMO ASSOCIATION ID # REQUIRED

Present this certificate on arrival at the Alamo counter at any location. Call your Professional Travel Consultant or Alamo at 1-800-732-3232. Reserve 24 hours in advance. Be sure to use your Association I.D. Number and request Plan "BY".