

FORMERLY THE THE FORD PARTS WAREHOUSE

PARTS & ACCESSORIES

1965 Full wheel cover 14"ea.	\$ 28.00
1966 Full wheel coverea.	28.00
Spinner & blue center for 1965-66 wire wheel coverea.	24.50
1966 Trim ring for styled steel wheelsea.	24.50
1965-66 Red center for styled steel wheelsea.	19.00
1965-67 Lug nuts for styled steel wheelsea.	3.00
1967 Trim ring for styled steel wheelsea.	24.50
1967 Blue center for styled steel wheelsea.	11.50
1967 Full wheel coverea.	26.00
1968 Full wheel cover (plain center)ea.	30.00
1968 Full wheel cover (red center)ea.	60.00
1968 Trim ring for styled steel wheelsea.	24.50
1966 Chrome Hi-Po air cleanerea.	22.50
1965-66 GT exhaust trumpetspr.	150.00
1965-66 Chrome trim for GT trumpetsea.	16.00
1965-68 GT or std. rear valance, specify yr.ea.	58.00
1965-66 Front bumperea.	120.00
1965-66 Rear bumperea.	120.00
1967-68 Front bumperea.	120.00
1967-68 Rear bumperea.	120.00
1965-66 Bumper guards (set of 4)ea.	94.00
1965-68 Front valance, specify yearea.	78.00
1965-66 Rocker panel moldingea.	65.00
1967-68 Rocker panel moldingea.	39.00
1965 Quarter panel ornamentea.	21.00
1966 Quarter panel ornamentea.	23.00
1965-66 Outside door handlesea.	19.00
1967-68 Outside door handlesea.	23.00
1965-66 Tail lamp bezelsea.	17.25
1967-68 Tail lamp bezelsea.	13.25
1965 Grille mesh, specify std. or GTea.	72.50
1966 Grilleea.	95.00
1967 Grilleea.	72.00
1965-67 GT grille bars, specify yearpr.	135.00
1965-67 Fog light assembliesea.	65.00
1965 Grille ornament "Horse and Corral"ea.	72.50
1965 Grille bars, std.ea.	28.00
1965-66 Fenders, specify year, sideea.	230.00
1965-68 Coupe quarter panels, specify yr.ea.	235.00
1965-66 Convertible quarter panelea.	235.00
1965-66 Fastback quarter panelea.	300.00
1965-66 Dash bezel, woodgrain finishea.	52.00
1967 Dash bezel, blackea.	69.00
1967 Dash bezel, brushed alum.ea.	69.00
1968 Dash bezel, blackea.	69.00
1968 Dash bezel, woodgrainea.	69.00
1965 Dash pads (black, red, blue)ea.	150.00
1966 Dash pads (black, burgundy, blue)ea.	150.00
1965-66 Armrest pads, specify yr., colorea.	24.00
1965-66 Chrome armrest basesea.	16.00
1967-68 Armrest pads, specify yr., colorea.	30.00
1965-68 Fuel tankea.	98.00
1965-66 Trunk mats, specify yr., body typeea.	45.00
1965-66 Steering wheel, blackea.	98.00
1965-67 Horn ring for woodgrain wheelea.	31.00
1965-66 Parking lamp assemblyea.	35.00
1967-68 Parking lamp assemblyea.	23.75
1965-66 Back-up lamp assy, specify yr.ea.	42.00
1965-66 Ign door lock set w/2 pony keysea.	32.00
1965-66 Step plates (specify body type)pr.	38.00
1965-68 Accessory step lates (outer)pr.	46.00
Cobra alum. valve covers, 260-302pr.	98.00
Cobra alum. valve covers, 351-428pr.	140.00
1965-66 Hoodea.	290.00
1967-68 Hood (specify year)ea.	270.00
1965-66 Radiator (specify engine)ea.	165.00
1965-68 Luggage rack (except fastback)ea.	145.00
1967 Antenna kitea.	60.00
1965-66 Door edge guard kitsea.	25.00

REPAIR PANELS

1965-66 Lower rear corner patch panel 7 1/2" heightea.	22.00
1965-70 Lower rear corner patch panel, 12" height, specify yearea.	31.00
1965-70 Rear wheel flair, specify yr.ea.	36.00
1965-70 Rear frame railea.	49.00
1965-66 Lower rear corner of front fenderea.	27.00
1967-68 Lower rear corner of front fenderea.	28.50
1965-70 Inner panel, lower rear qtr.ea.	20.00
1965-68 Short frt. floor panper side	48.50
1965-68 Long frt. floor panper side	54.00
1965-68 Rear floorper side	54.00
1965-70 Inner rear wheel Hsg.ea.	65.00
1965-68 Outer wheel Hsg. specify yr.ea.	65.00
1965-68 Conv. inner rocker panelsea.	60.00
1965-68 Conv. torque boxesea.	65.00

UPHOLSTERY 1965-68 (Specify Year and Color)

Complete set std. interiorea.	185.00
Front buckets onlypr.	132.00
Complete set with bench frontea.	225.00
Complete set 65-66 "Pony" Interiorea.	270.00
Front buckets onlyea.	190.00
Door panels std. interiorpr.	89.95
"Pony" door skinsea.	135.00

MOLDED CARPET

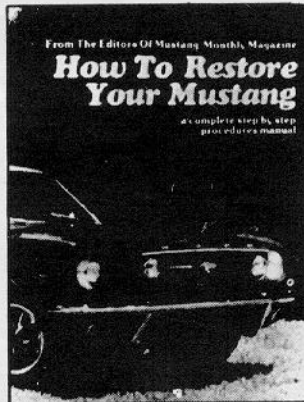
All carpets molded and trimmed to fit your car just like the original. No cutting or fitting required.	
Coupes, convertibles, fastbacks, without fold down areaea.	95.00
Fastbacks with fold down areaea.	115.00

ACCESSORY PONY MATS

Complete, set of fourea.	45.00
Fronts onlyea.	30.00

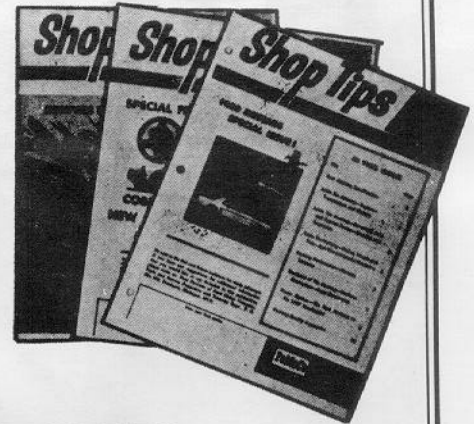
SHOP MANUALS, LITERATURE, PARTS CATALOGS

'65-'68ea.	30.00
'65-'73 Owners manualsea.	6.00
Mustang Does Itea.	27.50
'65-'72 Genuine Ford parts catalogs, loose leaf, gives illustrations and part numbersea.	70.00
1965-70 Factory Facts books, specify yr.ea.	4.95



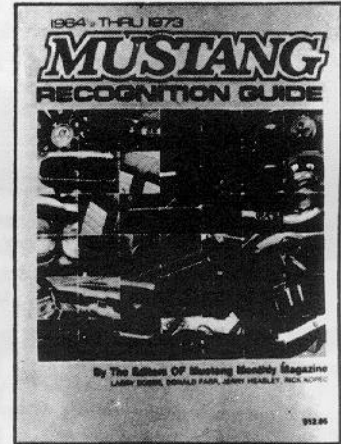
HOW TO RESTORE YOUR MUSTANG

1965-68 Covers each phase of
restoration in detail \$14.95



SHOP TIPS

Ford Parts Warehouse has reprinted 3 of Ford's Mustang-related SHOP TIPS publications. Volume 2, Number 4 is the special Mustang issue that introduced Mustang specifications to Ford service dealers. Volume 2, Number 2 (February 1964) describes the "Cobra Kits", and Volume 2, Number 6 includes a section on "Modifying Ford V-8s for High Performance". The superior quality reprints sell for \$4.50 each, PPD.



MUSTANG RECOGNITION GUIDE

Compiled by the editors of Mustang Monthly, over
300 photos in color \$16.95

We also have a huge inventory of obsolete Ford Parts. If you don't see it listed call or write (SASE) for availability and price. Send \$2.00 for our 72-page catalog of Ford and Mustang Parts. All parts are new unless noted. Please add 10% (\$2 minimum) for UPS except fenders, hoods and quarter panels will be shipped freight collect.

MasterCard and VISA accepted. Satisfaction guaranteed (30-day return)

KING & WESLEY OBSOLETE PARTS, INC.

Courthouse Square, Liberty, KY 42539

PH: 606-787-5031