



# KING & WESLEY

"NEW PARTS FOR OLD MUSTANGS"

## PARTS & ACCESSORIES

1965 Full wheel cover 14" . . . . .	ea. \$ 28.00
1966 Full wheel cover . . . . .	ea. 28.00
Spinner & Blue center for 1965-66 wire wheel cover . . . . .	ea. 24.50
1966 Trim ring for styled wheels . . . . .	24.50
1965-66 Red center for styled steel wheels . . . . .	19.00
1965-67 Lug nuts for styled steel wheels . . ea. . . . .	3.00
1967 Trim ring for styled steel wheels . . . . .	24.50
1967 Blue center for styled steel wheels . . . . .	11.50
1967 Full wheel cover . . . . .	26.00
1968 Full wheel cover (plain center) . . . . .	30.00
1968 Full wheel cover (red center) . . . . .	60.00
1968 Trim ring for styled steel wheels . . . . .	24.50
1966 Chrome Hi-Po air cleaner . . . . .	22.50
1965-66 GT exhaust trumpets . . . . . pr. . . . .	150.00
1965-66 Chrome trim for GT trumpets . . . ea. . . . .	16.00
1965-68 GT or std. rear valance, specify yr. . . . .	58.00
1965 Quarter panel ornament . . . . .	21.00
1966 Quarter panel ornament . . . . .	23.00
1965-66 Outside door handles . . . . . ea. . . . .	19.00
1967-68 Outside door handles . . . . . ea. . . . .	23.00
1965-66 Tail lamp bezels . . . . . ea. . . . .	17.25
1967-68 Tail lamp bezels . . . . . ea. . . . .	13.25
1965 Grille mesh, specify std. or GT . . . . .	72.50
1966 Grille . . . . .	95.00
1967 Grille . . . . .	72.00
1965-67 GT grille bars, specify year . . . . pr. . . . .	135.00
1965-67 Fog light assemblies . . . . . ea. . . . .	65.00
1965 Grille ornament "Horse and Corral" . . . . .	72.50
1965 Grille bars, std. . . . . ea. . . . .	28.00
1965-66 Convertible quarter panel . . . . .	235.00
1965-66 Fastback quarter panel . . . . .	300.00
1965-66 Dash bezel, woodgrain finish . . . . .	52.00
1967 Dash bezel, black . . . . .	69.00
1967 Dash bezel, brushed alum. . . . .	69.00
1968 Dash bezel, black . . . . .	69.00
1968 Dash bezel, woodgrain . . . . .	69.00
1965 Dash pads (black, red, blue) (Genuine Ford) . . . . .	144.95
1966 Dash pads (black, burgundy, blue) (Genuine Ford) . . . . .	144.95
1965-68 Fuel tank . . . . .	98.00
1965-66 Steering wheel, black . . . . .	98.00
1965-67 Horn ring for woodgrain wheel . . . . .	31.00
1965-66 Parking lamp assembly . . . . .	35.00
1967-68 Parking lamp assembly . . . . .	23.75
1965-66 Back-up lamp assy., specify yr. . . . .	42.00
1965-66 Ign. door lock set w/2 pony keys . . . . .	32.00
1965-68 Accessory step lates (outer) . . . pr. . . . .	46.00
1965-66 Radiator (specify engine) . . . . .	165.00
1965-68 Luggage rack (except fastback) . . . . .	145.00
1967 Antenna kit . . . . .	60.00
1965-66 Door edge guard kits . . . . .	25.00



Cobra Alum. Valve Covers 260-302 . . . . pr. 84.95  
Cobra Alum. Valve Covers 351-428 . . . . pr. 140.00

## REPAIR PANELS

1965-66 Lower rear corner patch panel 7 1/2" height . . . . .	22.00
1965-70 Lower rear corner patch panel 12" height, specify year . . . . .	30.00
1965-70 Rear wheel flair, specify yr. . . . .	36.00
1965-66 Lower rear corner of front fender . . . . .	27.00
1967-68 Lower rear corner of front fender . . . . .	28.50
1965-70 Inner panel, lower rear qtr. . . . .	20.00
1965-68 Short frt. floor pan . . . . . per side . . . . .	40.00
1965-68 Long frt. floor pan . . . . . per side . . . . .	44.00
1965-68 Rear floor . . . . . per side . . . . .	44.00
1965-68 Outer wheel Hsg. specify yr. . . . .	59.95
1965-68 Conv. inner rocker panels . . . . .	49.95
1965-68 Conv. torque boxes . . . . .	49.95

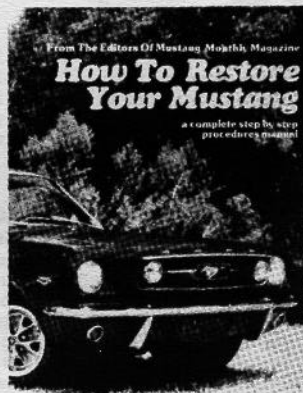
## UPHOLSTERY 1965-68

(Specify Year and Color)

Complete set std. interior . . . . .	159.95
Front buckets only . . . . . pr. . . . .	117.95
Complete set with bench front . . . . .	199.95
Complete set 65-66 "Pony" interior . . . . .	219.95
"Pony" door skins . . . . .	135.00

## SHOP MANUALS, LITERATURE, PARTS CATALOGS

'65-'68 Shop manuals . . . . . ea. . . . .	30.00
'65-'73 Owners manuals . . . . . ea. . . . .	6.00
Mustang Does It . . . . .	27.50
'65-'72 Genuine Ford parts catalogs, loose leaf, gives illustrations and part numbers . . . . .	70.00
1965-70 Factory Facts books, specify yr. . . . .	4.95
Mustang Recognition Guide, compiled by the editors of Mustang Monthly, over 300 photos in color . . . . .	16.95



## HOW TO RESTORE YOUR MUSTANG

1965-68 Covers each phase of restoration in detail . . . . . 14.95

## MOLDED CARPET

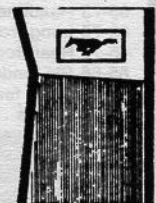
All carpets molded and trimmed to fit your car just like the original. No cutting or fitting required.  
Coupes, convertibles, fastbacks, without fold down area . . . . . 83.95  
Fastbacks with fold down area . . . . . 103.95



## SHOP TIPS

Mustang-related SHOP TIPS. Volume 2, Number 4 is the special Mustang issue that introduced Mustang specifications to Ford dealers. Volume 2, Number 2 (February 1964) describes the "Cobra Kits", and Volume 2, Number 6 includes a section on "Modifying Ford V-8s for High Performance". The superior quality reprints sell for \$4.50 each, PPD.

## ACCESSORY PONY MATS



Available in:  
White - Blue - Red - Burgundy  
Black - Green

Complete, set of four . . . . . 39.95

We also have a huge inventory of obsolete Ford Parts. If you don't see it listed call or write (SASE) for availability and price. Send \$2.00 for our 72-page catalog of Ford and Mustang Parts.

All parts are new unless noted. Please add 10% (\$2 minimum) for UPS except fenders, hoods and quarter panels will be shipped freight collect.

MasterCard and VISA accepted. Satisfaction guaranteed (30-day return)

# KING & WESLEY OBSOLETE PARTS, INC.

Courthouse Square, Liberty, KY 42539

PH: 606-787-5031