

KING & WESLEY

"NEW PARTS FOR OLD MUSTANGS"

PARTS & ACCESSORIES

| | | |
|---|-----|----------|
| 1965 Full wheel cover 14" | ea. | \$ 28.00 |
| 1966 Full wheel cover | ea. | 28.00 |
| Spinner & Blue center for 1965-66 wire wheel cover | ea. | 24.50 |
| 1966 Trim ring for styled wheels | | 24.50 |
| 1965-66 Red center for styled steel wheels | | 19.00 |
| 1965-67 Lug nuts for styled steel wheels | ea. | 3.00 |
| 1967 Trim ring for styled steel wheels | | 24.50 |
| 1967 Blue center for styled steel wheels | | 11.50 |
| 1967 Full wheel cover | | 26.00 |
| 1968 Full wheel cover (plain center) | | 30.00 |
| 1968 Full wheel cover (red center) | | 60.00 |
| 1968 Trim ring for styled steel wheels | | 24.50 |
| 1966 Chrome Hi-Po air cleaner | | 22.50 |
| 1965-66 GT exhaust trumpets | pr. | 150.00 |
| 1965-66 Chrome trim for GT trumpets | ea. | 16.00 |
| 1965-68 GT or std. rear valance, specify yr. | | 58.00 |
| 1965 Quarter panel ornament | | 21.00 |
| 1966 Quarter panel ornament | | 23.00 |
| 1965-66 Outside door handles | ea. | 19.00 |
| 1967-68 Outside door handles | ea. | 23.00 |
| 1965-66 Tail lamp bezels | ea. | 17.25 |
| 1967-68 Tail lamp bezels | ea. | 13.25 |
| 1965 Grille mesh, specify std. or GT | | 72.50 |
| 1966 Grille | | 95.00 |
| 1967 Grille | | 72.00 |
| 1965-67 GT grille bars, specify year | pr. | 135.00 |
| 1965-67 Fog light assemblies | ea. | 65.00 |
| 1965 Grille ornament "Horse and Corral" | | 72.50 |
| 1965 Grille bars, std. | ea. | 28.00 |
| 1965-66 Convertible quarter panel | | 235.00 |
| 1965-66 Fastback quarter panel | | 300.00 |
| 1965-66 Dash bezel, woodgrain finish | | 52.00 |
| 1967 Dash bezel, black | | 69.00 |
| 1967 Dash bezel, brushed alum. | | 69.00 |
| 1968 Dash bezel, black | | 69.00 |
| 1968 Dash bezel, woodgrain | | 69.00 |
| 1965 Dash pads (black, red, blue) (Genuine Ford) | | 144.95 |
| 1966 Dash pads (black, burgundy, blue) (Genuine Ford) | | 144.95 |
| 1965-68 Fuel tank | | 98.00 |
| 1965-66 Steering wheel, black | | 98.00 |
| 1965-67 Horn ring for woodgrain wheel | | 31.00 |
| 1965-66 Parking lamp assembly | | 35.00 |
| 1967-68 Parking lamp assembly | | 23.75 |
| 1965-66 Back-up lamp assy., specify yr. | | 42.00 |
| 1965-66 Ign. door lock set w/2 pony keys | | 32.00 |
| 1965-68 Accessory step lates (outer) | pr. | 46.00 |
| 1965-66 Radiator (specify engine) | | 165.00 |
| 1965-68 Luggage rack (except fastback) | | 145.00 |
| 1967 Antenna kit | | 60.00 |
| 1965-66 Door edge guard kits | | 25.00 |

REPAIR PANELS

| | | |
|--|----------|-------|
| 1965-66 Lower rear corner patch panel 7 1/2" height | | 22.00 |
| 1965-70 Lower rear corner patch panel 12" height, specify year | | 30.00 |
| 1965-70 Rear wheel flair, specify yr. | | 36.00 |
| 1965-66 Lower rear corner of front fender | | 27.00 |
| 1967-68 Lower rear corner of front fender | | 28.50 |
| 1965-70 Inner panel, lower rear qtr. | | 20.00 |
| 1965-68 Short frt. floor pan | per side | 40.00 |
| 1965-68 Long frt. floor pan | per side | 44.00 |
| 1965-68 Rear floor | per side | 44.00 |
| 1965-68 Outer wheel Hsg. specify yr. | | 59.95 |
| 1965-68 Conv. inner rocker panels | | 49.95 |
| 1965-68 Conv. torque boxes | | 49.95 |

UPHOLSTERY 1965-68

(Specify Year and Color)

| | |
|--|-----------|
| Complete set std. interior | 159.95 |
| Front buckets only | pr. 23.00 |
| Complete set with bench front | 199.95 |
| Complete set 65-66 "Pony" Interior | 219.95 |
| "Pony" door skins | 135.00 |

SHOP MANUALS, LITERATURE, PARTS CATALOGS

| | | |
|---|-----|-------|
| '65-'68 Shop manuals | ea. | 30.00 |
| '65-'73 Owners manuals | ea. | 6.00 |
| Mustang Does It | | 27.50 |
| '65-'72 Genuine Ford parts catalogs, loose leaf, gives illustrations and part numbers | | 70.00 |
| 1965-70 Factory Facts books, specify yr. | | 4.95 |
| Mustang Recognition Guide, compiled by the editors of Mustang Monthly, over 300 photos in color | | 16.95 |

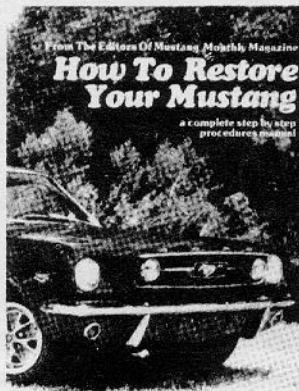
MOLDED CARPET

All carpets molded and trimmed to fit your car just like the original. No cutting or fitting required.
Coupes, convertibles, fastbacks, without fold down area 83.95
Fastbacks with fold down area 103.95



SHOP TIPS

Mustang-related SHOP TIPS. Volume 2, Number 4 is the special Mustang issue that introduced Mustang specifications to Ford dealers. Volume 2, Number 2 (February 1964) describes the "Cobra Kits", and Volume 2, Number 6 includes a section on "Modifying Ford V-8s for High Performance". The superior quality reprints sell for \$4.50 each, PPD.



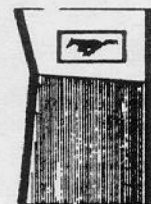
HOW TO RESTORE YOUR MUSTANG

| | | |
|--|--|-------|
| 1965-68 Covers each phase of restoration in detail | | 14.95 |
|--|--|-------|



| | | |
|--|-----|--------|
| Cobra Alum. Valve Covers 260-302 | pr. | 84.95 |
| Cobra Alum. Valve Covers 351-428 | pr. | 140.00 |

ACCESSORY PONY MATS



Available in:
White - Blue - Red - Burgundy
Black -Green
Complete, set of four 39.95

We also have a huge inventory of obsolete Ford Parts. If you don't see it listed call or write (SASE) for availability and price. Send \$2.00 for our 72-page catalog of Ford and Mustang Parts. All parts are new unless noted. Please add 10% (\$2 minimum) for UPS except fenders, hoods and quarter panels will be shipped freight collect.

MasterCard and VISA accepted. Satisfaction guaranteed (30-day return)

KING & WESLEY OBSOLETE PARTS, INC.

Courthouse Square, Liberty, KY 42539

PH: 606-787-5031