



KING & WESLEY

"NEW PARTS FOR OLD MUSTANGS"

PARTS & ACCESSORIES

1965 Full wheel cover 14"	ea. \$ 28.00
1966 Full wheel cover	ea. 28.00
Spinner & Blue center for 1965-66 wire wheel cover	ea. 24.50
1966 Trim ring for styled wheels	24.50
1965-66 Red center for styled steel wheels	19.00
1965-67 Lug nuts for styled steel wheels . . ea.	3.00
1967 Trim ring for styled steel wheels	24.50
1967 Blue center for styled steel wheels	11.50
1967 Full wheel cover	26.00
1968 Full wheel cover (plain center)	30.00
1968 Full wheel cover (red center)	60.00
1968 Trim ring for styled steel wheels	24.50
1966 Chrome Hi-Po air cleaner	22.50
1965-66 GT exhaust trumpets pr.	150.00
1965-66 Chrome trim for GT trumpets . . . ea.	16.00
1965-68 GT or std. rear valance, specify yr.	58.00
1965 Quarter panel ornament	21.00
1966 Quarter panel ornament	23.00
1965-66 Outside door handles ea.	19.00
1967-68 Outside door handles ea.	23.00
1965-66 Tail lamp bezels ea.	17.25
1967-68 Tail lamp bezels ea.	13.25
1965 Grille mesh, specify std. or GT	72.50
1966 Grille	95.00
1967 Grille	72.00
1965-67 GT grille bars, specify year pr.	135.00
1965-67 Fog light assemblies ea.	65.00
1965 Grille ornament "Horse and Corral"	72.50
1965 Grille bars, std. ea.	28.00
1965-66 Convertible quarter panel	235.00
1965-66 Fastback quarter panel	300.00
1965-66 Dash bezel, woodgrain finish	52.00
1967 Dash bezel, black	69.00
1967 Dash bezel, brushed alum.	69.00
1968 Dash bezel, black	69.00
1968 Dash bezel, woodgrain	69.00
1965 Dash pads (black, red, blue) (Genuine Ford)	144.95
1966 Dash pads (black, burgundy, blue) (Genuine Ford)	144.95
1965-68 Fuel tank	98.00
1965-66 Steering wheel, black	98.00
1965-67 Horn ring for woodgrain wheel	31.00
1965-66 Parking lamp assembly	35.00
1967-68 Parking lamp assembly	23.75
1965-66 Back-up lamp assy., specify yr.	42.00
1965-66 Ign. door lock set w/2 pony keys	32.00
1965-68 Accessory step lates (outer) . . . pr.	46.00
1965-66 Radiator (specify engine)	165.00
1965-68 Luggage rack (except fastback)	145.00
1967 Antenna kit	60.00
1965-66 Door edge guard kits	25.00

REPAIR PANELS

1965-66 Lower rear corner patch panel 7 1/2" height	22.00
1965-70 Lower rear corner patch panel 12" height, specify year	30.00
1965-70 Rear wheel flair, specify yr.	36.00
1965-66 Lower rear corner of front fender	27.00
1967-68 Lower rear corner of front fender	28.50
1965-70 Inner panel, lower rear qtr.	20.00
1965-68 Short frt. floor pan per side	40.00
1965-68 Long frt. floor pan per side	44.00
1965-68 Rear floor per side	44.00
1965-68 Outer wheel Hsg. specify yr.	59.95
1965-68 Conv. inner rocker panels	49.95
1965-68 Conv. torque boxes	49.95

UPHOLSTERY 1965-68 (Specify Year and Color)

Complete set std. interior	159.95
Front buckets only pr.	117.95
Complete set with bench front	199.95
Complete set 65-66 "Pony" interior	219.95
"Pony" door skins	135.00

SHOP MANUALS, LITERATURE, PARTS CATALOGS

'65-'68 Shop manuals ea.	30.00
'65-'73 Owners manuals	6.00
Mustang Does It	27.50
'65-'72 Genuine Ford parts catalogs, loose leaf, gives illustrations and part numbers	70.00
1965-70 Factory Facts books, specify yr.	4.95
Mustang Recognition Guide, compiled by the editors of Mustang Monthly, over 300 photos in color	16.95

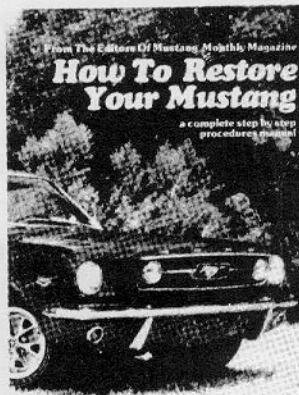
MOLDED CARPET

All carpets molded and trimmed to fit your car just like the original. No cutting or fitting required.
Coupes, convertibles, fastbacks, without fold down area 83.95
Fastbacks with fold down area 103.95



SHOP TIPS

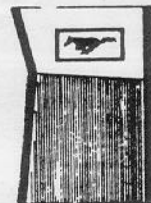
Mustang-related SHOP TIPS. Volume 2, Number 4 is the special Mustang issue that introduced Mustang specifications to Ford dealers. Volume 2, Number 2 (February 1964) describes the "Cobra Kits", and Volume 2, Number 6 includes a section on "Modifying Ford V-8s for High Performance". The superior quality reprints sell for \$4.50 each, PPD.



HOW TO RESTORE YOUR MUSTANG

1965-68 Covers each phase of restoration in detail	14.95
--	-------

ACCESSORY PONY MATS



Available in:
White - Blue - Red - Burgundy
Black - Green

Complete, set of four	39.95
---------------------------------	-------



Cobra Alum. Valve Covers 260-302 pr.	84.95
Cobra Alum. Valve Covers 351-428 pr.	140.00

We also have a huge inventory of obsolete Ford Parts. If you don't see it listed call or write (SASE) for availability and price. Send \$2.00 for our 72-page catalog of Ford and Mustang Parts.

All parts are new unless noted. Please add 10% (\$2 minimum) for UPS except fenders, hoods and quarter panels will be shipped freight collect.

MasterCard and VISA accepted. Satisfaction guaranteed (30-day return)

KING & WESLEY OBSOLETE PARTS, INC.

Courthouse Square, Liberty, KY 42539

PH: 606-787-5031