

Roush Racing Team's Truck A Rolling Shop

By KITTY WILMOT
Times Assistant Editor

You've probably all seen those detailed tractor-trailer rigs used by the high dollar racing teams. And, if you're like me, you've always wondered what it was like inside one of those trucks.

Recently, I was fortunate enough to be at Road Atlanta when the Roush Racing SCCA team's rig rolled in for a few days of testing. Even before the truck got inside the gate, we noticed that big red, white and blue Mustang on its side. And the words "Roush Racing" were like magic to the Mustang fanatics who were there for the weekend's vintage races.

This truck is first class all the way. It is a 1992 Ford LTL Aeromax, which is a new design. It has a 430 Cummins motor, eight-speed direct overdrive, cruise control, tilt/telescopic steering wheel, power steering, power brakes, air conditioning, power windows, AM/FM stereo cassette, air ride seats, a double sleeper with a separate air conditioning control and two-axle drive. What more could you want?

The trailer was built by High Tech Performance Trailers in Painesville, OH, and has a 15 kilowatt diesel generator that runs



all the equipment. This generator is so quiet that you literally cannot hear it running.

You may not be able to tell it from the accompanying photos, but the guys from Advance Custom Paint, Belleville, MI, and Competition Graphics, Farmington Hills, MI, did a superb job on the paint, the mural and

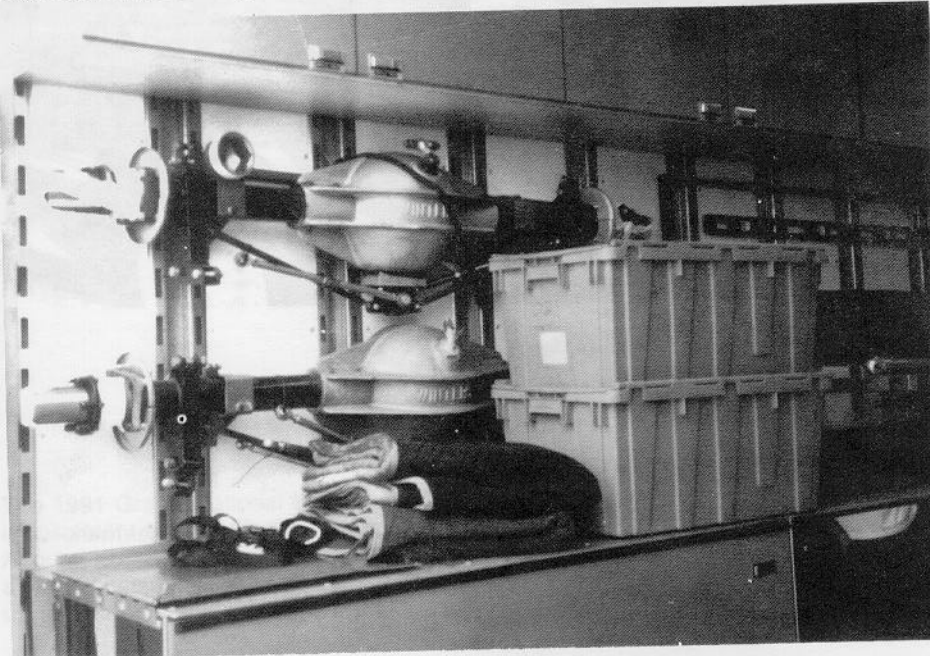
the graphics. The colors are incredibly vivid. You would have to be a Chevy freak not to notice this truck!

If you thought the cab was equipped, wait 'til you hear what they've got in the trailer. Of course, they have the obligatory race cars — two of them. The first is the car that is actually raced. This used to be Willie T. Ribbs car before he defected. It is now driven by Michael Dingman.

Who is Michael Dingman? Well, to tell you the truth, I had never heard of him before either, but you'd better remember that name because it sounds like he may be the next Roush star. According to his instructor, Max Jones, Dingman has won two nationals, the June sprints this year and he's currently leading the Southeastern Division for SCCA.

Speaking of Max Jones, he drives the second car. You might remember him from the 1990 Roush GT1 team or when he was the Trans Am Champion in 1989. His job is to teach Michael the lines at the individual race tracks. He must be pretty knowledgeable, because they race all over the country, including Road America, Road Atlanta, Charlotte, Lime Rock, Sears Point and Mid-Ohio, just to name a few.

Well, anyway, the cars take up the top portion of the trailer. Under those is where



(The photos accompanying this story were taken by Kitty Wilmot).

The Mustang Times/October, 1991



The Roush racing team's SCCA crew uses a Ford tractor-trailer rig as a rolling shop as it travels from track to track for competition. The rig is used to transport two race cars, but also includes an assortment of tools and parts that enable crews to solve almost any mechanical problem which might crop up on the circuit. Machinery in the truck includes a shock dyno, a parts cleaner, a bender/cutter, a welder and a computer room. The team also carries two complete spare engines, its own supply of racing fuel and a complete set of body parts — enough to build a whole new race car if necessary.

it becomes incredible. They have a shock dyno, a parts cleaner (which is used regularly), a bender/cutter, a sander, a grinder, a drill press, a welder and a computer room. And this is just the machinery!

They also have two complete spare engines, SVO 302s with 310 cubic inches and about 570-585 horsepower. They carry their own supply of Turbo Blue race fuel in a tank that is built into the trailer and a complete set of body parts to build a whole new car, if necessary.

I saw at least four spare windshields, two spare rear end assemblies, numerous spare tires and more screws, clips and grommets than you can imagine. They literally have a spare for every part on the race car. As truck driver and transmission specialist, Jack McClanahan said, "We have spares for spares."

While it's great fun to go to the races, it's really an experience to be inside the team truck. You can't comprehend the amount of money involved until you see a set-up like this. I can't imagine that their pro teams could have any better equipment than this SCCA team.

This team will be racing at Road Atlanta in the SCCA runoffs October 11-13, with the actual race on Sunday, October 13. If you're lucky enough to get into the pits, look for them. Needless to say, they're pretty proud of their team and their truck. And since they're racing Mustangs, who can blame them?

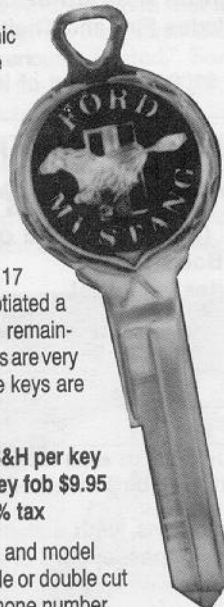
The Mustang Times/October, 1991

Perfect Christmas Gift for Mustang owners

Jesser's Auto Clinic is offering distinctive keys especially made for your Mustang. Jesser's found the 10-karat white gold plated keys by accident (the original manufacturer stopped production 17 years ago,) and negotiated a deal to get the entire remaining inventory. Supplies are very limited, and when the keys are gone they're gone!

\$12.50 plus \$2.00 S&H per key
Matching leather key fob \$9.95
Ohio res. add 5.75% tax

- Specify year, make and model
- Check key for single or double cut
- Please include phone number



Jesser's Auto Clinic
26 West Street • Akron, Ohio 44303

Phone orders 7 days, 9 a.m. - 9 p.m. EST

(216) 376-8181



other collectable keys available!



**CAR POLISH IN
COLORS**
Eliminates White Residue.
More Uniform Results

- Fourteen colors
- Easy to use, wipe on-wipe off
- Contains both cleaners & durable polish resins.
- One bottle does 3-7 times.
- Money back guarantee

Clean, Renew Color, Shine, Protect all in one easy step with ColorShine...a new concept in automobile surface protection! Scientifically-developed formula blends minor paint defects automatically adding color as needed (ordinary waxes emphasize surface imperfections by drying white and are therefore less effective) while its cleansers remove oxidation without harming good paint. Select color nearest to your car's (a perfect match is not needed).

Drk. Blue, Lt. Blue, Charcoal/Black, Red, Brown, Drk. Green, Lt. Green, Silver, Tan, Maroon, Gold, Copper/Bronze, Yellow, White (removes grey). Free info. available. On separate paper send: name, address, VISA/MC # with signature, expiration date, and colors desired.

L.A. Cnty 7.0%, CA 6.25%. Other states no tax. California requires that shipping be taxed also, sorry, their rule, not ours. *Shipping charge applies only to first bottle of order.

\$10.99 each x _____ = \$ _____	Shipping \$ 3.50
Subtotal \$ _____	Tax _____
TOTAL \$ _____	

Check or M.O. OK

ColorShine
2629 Timberlake Dr., La Crescenta, CA 91214