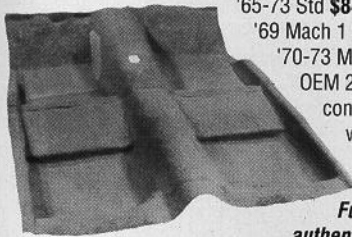


1-3 Day Delivery to Most of The USA*

Shipping from 4 Locations • Open 7 Days a week!

*Estimated UPS Standard ground transit time in business days when shipment originates from our store nearest it's final destination.

ORIGINAL STYLE MOLDED CARPETS



'65-73 Std \$84.95
'69 Mach 1 \$159.95
'70-73 Mach 1 \$145
OEM 2-pc
construction
with 1/2"
jute pad.

Full stock of
authentic colors!

FUEL TANKS

'65-68 \$99.95 and
up, '69 \$185.75
'70 \$204.37



CONCOURS
GAS CAPS
from \$29.95



SENDING UNIT

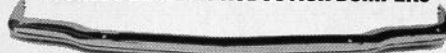
'65-68 only \$34.95



REPRODUCTION BODY PANELS

Fender: '65-66 \$119.95; '67-68 \$129.95;
'69-70 \$139.95
Hood: '65-66 \$144.50; '67-68 w/o ind \$154.95
Full Quarter Panel: '65-66 Cpe/Cnv \$109.95
Quarter Face Panel: '65-68 \$69.95; '69-70 \$99.95;
'71-73 \$69.95
Tail Light Panel: '65-68 \$44.95; '69 \$94.50;
'70 \$79.95; '71-73 \$99.95
Front Valance: '65-68 \$34.95; '69-70 \$69.95;
'71-73 \$131.95
Rear Valance: '65-68 \$37.95; '69-70 \$44.95;
'71-73 \$54.95; Trunk Lid: '65-66 \$148.50

WORLDS BEST REPRODUCTION BUMPERS



'65-68 FT or RR only \$77.95
'69-70 FT or RR only \$84.95
'71-72 Front Chrome \$174.95
'71-73 Rear only \$179.95
Deluxe bolt kit, 30 pcs \$11.50

CONCOURS DASH PADS

Identical to OEM



'65-66 5 colors \$149.95
'69-70 Black: non-AC \$394.95;
w/AC \$414.95

INSTRUMENT BEZELS

from \$29.95.

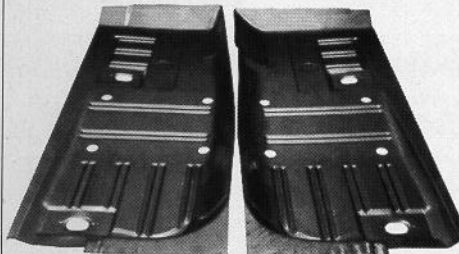


FULL LENGTH CONSOLES

Exact repros. '65-66 w/AC \$169.00
'65-66 w/o AC \$189.00



Call for
console accessories



FULL LENGTH FLOOR PANS '65-73 \$139.90/pr
TRUNK FLOOR PAN '71-73 \$122.95 (UPSable)

OEM LOWER CONTROL ARMS

'65-66 \$39.95
'67 \$57.50
'68-73 \$39.95



HEAVY DUTY COILS

Blue PVC-coated high-
rate springs provide high
performance ride \$66.50

COIL SPRING SADDLES

We sell the only repro that is
an EXACT duplicate AND
tested to OEM specs. \$31.50

LARGEST STOCK OF AIR CONDITIONING PARTS

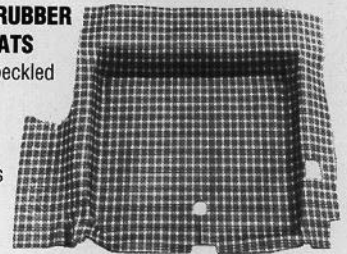
Complete system for
'65-68 only
\$798.00.

See our catalog!



MOLDED RUBBER TRUNK MATS

Plaid or Speckled
\$39.95
Vinyl Mats
\$16.95
Tire Covers
\$7.95



CONCOURS WEATHERSTRIPPING

Door: '65-66 \$15.95; '67-68 \$24.95; '69-70 \$39.95
Siderail: '65-66 FB \$47.95; Cpe \$24.95; '67-68 FB
\$44.95; Cpe \$24.95; '69-70 Cpe \$49.95; FB \$89.95;
'71-73 \$49.95 (all above are pairs)
Convertible Top Sets: '65-68
\$99.95; '69-70 \$179.95; '71-
73 \$189.95
Trunk: '65-68 FB \$9.95; '65-
70 Cpe/Cnv \$9.95; '67-70
FB \$12.95; '71-73 \$15.95



All stores open M-F 8am-9pm; Sat 8am-5pm; Sun 11am-5pm

CALIFORNIA Warehouse

1376 Walter St. #1 • Ventura, CA 93003
Ⓞ local (toll) 805-654-0468
Ⓞ toll free all states 800-235-3445

MICHIGAN Warehouse

12788 Currie Ct. • Livonia, MI 48150
Ⓞ local (toll) 313-591-1956
Ⓞ toll free out of state 800-521-6104

N. CAROLINA Warehouse

2330 Tipton Dr. #800 • Charlotte, NC 28206
Ⓞ local (toll) 704-331-0900
Ⓞ toll free all states 800-368-6451

FLORIDA Warehouse

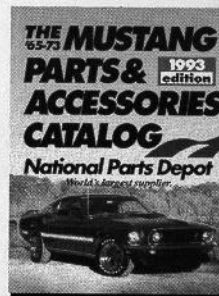
3101 SW 40th Blvd. • Gainesville, FL 32608
Ⓞ local (toll) 904-378-2473
Ⓞ toll free all states 800-874-7595



National Parts Depot

World's Largest Supplier

FREE Catalog!



To obtain
your copy

Phone our 24-hour
catalog hot line:

904-378-9000

Or write:

NPD Mustang Catalog
3101 SW 40th Blvd.,
Gainesville, FL 32608

120 pages of high-quality parts &
accessories for the '65-73 Ford Mustang.

MasterCard, VISA, UPS COD

