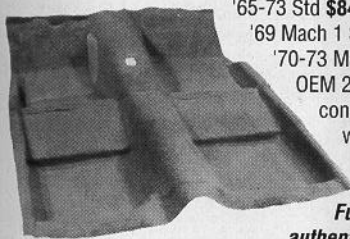


# 1-3 Day Delivery to Most of The USA\*

## Shipping from 4 Locations • Open 7 Days a week!

\*Estimated UPS Standard ground transit time in business days when shipment originates from our store nearest it's final destination.

### ORIGINAL STYLE MOLDED CARPETS



'65-73 Std \$84.95  
'69 Mach 1 \$159.95  
'70-73 Mach 1 \$145  
OEM 2-pc  
construction  
with 1/2"  
jute pad.

Full stock of  
authentic colors!

### FUEL TANKS

'65-68 \$99.95 and  
up, '69 \$185.75  
'70 \$204.37



CONCOURS  
GAS CAPS  
from \$29.95

### SENDING UNIT

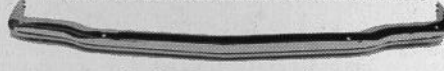
'65-68 only \$34.95



### REPRODUCTION BODY PANELS

Fender: '65-66 \$119.95; '67-68 \$129.95;  
'69-70 \$139.95  
Hood: '65-66 \$144.50; '67-68 w/o ind \$154.95  
Full Quarter Panel: '65-66 Cpe/Cnv \$109.95  
Quarter Face Panel: '65-68 \$69.95; '69-70 \$99.95;  
'71-73 \$69.95  
Tail Light Panel: '65-68 \$44.95; '69 \$94.50;  
'70 \$79.95; '71-73 \$99.95  
Front Valance: '65-68 \$34.95; '69-70 \$69.95;  
'71-73 \$131.95  
Rear Valance: '65-68 \$37.95; '69-70 \$44.95;  
'71-73 \$54.95; Trunk Lid: '65-66 \$148.50

### WORLDS BEST REPRODUCTION BUMPERS



'65-68 FT or RR only \$77.95  
'69-70 FT or RR only \$84.95  
'71-72 Front Chrome \$174.95  
'71-73 Rear only \$179.95  
Deluxe bolt kit, 30 pcs \$11.50

### CONCOURS DASH PADS

Identical to OEM



'65-66 5 colors \$149.95  
'69-70 Black: non-AC \$394.95;  
w/AC \$414.95

### INSTRUMENT BEZELS

from \$29.95.

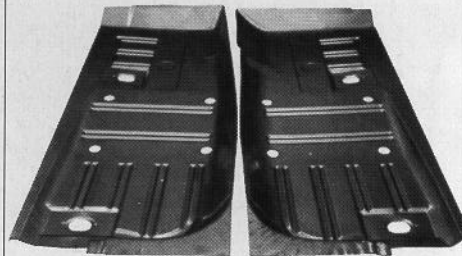


### FULL LENGTH CONSOLES

Exact repros. '65-66 w/AC \$169.00  
'65-66 w/o AC \$189.00



Call for  
console accessories



FULL LENGTH FLOOR PANS '65-73 \$139.90/pr  
TRUNK FLOOR PAN '71-73 \$122.95 (UPSable)

### OEM LOWER CONTROL ARMS

'65-66 \$39.95  
'67 \$57.50  
'68-73 \$39.95



### HEAVY DUTY COILS

Blue PVC-coated high-  
rate springs provide high  
performance ride \$66.50

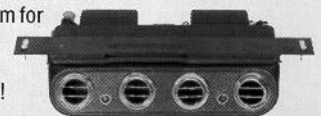
### COIL SPRING SADDLES

We sell the only repro that is  
an EXACT duplicate AND  
tested to OEM specs. \$31.50

### LARGEST STOCK OF AIR CONDITIONING PARTS

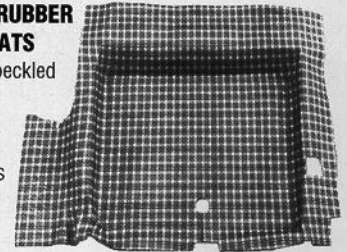
Complete system for  
'65-68 only  
\$798.00.

See our catalog!



### MOLDED RUBBER TRUNK MATS

Plaid or Speckled  
\$39.95  
Vinyl Mats  
\$16.95  
Tire Covers  
\$7.95



### CONCOURS WEATHERSTRIPPING

Door: '65-66 \$15.95; '67-68 \$24.95; '69-70 \$39.95  
Siderail: '65-66 FB \$47.95; Cpe \$24.95; '67-68 FB  
\$44.95; Cpe \$24.95; '69-70 Cpe \$49.95; FB \$89.95;  
'71-73 \$49.95 (all above are pairs)  
Convertible Top Sets: '65-68  
\$99.95; '69-70 \$179.95; '71-  
73 \$189.95  
Trunk: '65-68 FB \$9.95; '65-  
70 Cpe/Cnv \$9.95; '67-70  
FB \$12.95; '71-73 \$15.95



All stores open M-F 8am-9pm; Sat 8am-5pm; Sun 11am-5pm

### CALIFORNIA Warehouse

1376 Walter St. #1 • Ventura, CA 93003

☎ local (toll) 805-654-0468

☎ toll free all states 800-235-3445

### MICHIGAN Warehouse

12788 Currie Ct. • Livonia, MI 48150

☎ local (toll) 313-591-1956

☎ toll free out of state 800-521-6104

### N. CAROLINA Warehouse

2330 Tipton Dr. #800 • Charlotte, NC 28206

☎ local (toll) 704-331-0900

☎ toll free all states 800-368-6451

### FLORIDA Warehouse

3101 SW 40th Blvd. • Gainesville, FL 32608

☎ local (toll) 904-378-2473

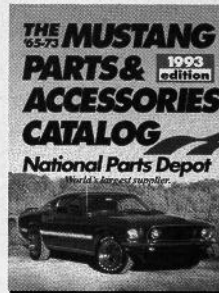
☎ toll free all states 800-874-7595

# National Parts Depot



World's Largest Supplier

## FREE Catalog!



To obtain  
your copy

Phone our 24-hour  
catalog hot line:

**904-378-9000**

Or write:

NPD Mustang Catalog  
3101 SW 40th Blvd.,  
Gainesville, FL 32608

120 pages of high-quality parts &  
accessories for the '65-73 Ford Mustang.

MasterCard, VISA, UPS COD

