

NOW ORDER TOLL FREE!
(800) 888-1MPC
 For Info & Answers Call:
(214) 262-8171



"Arm Rest Deal"
 2/65-66
 Bases,
 2/65-66
 Pads
\$23.00

"Trunk Deal"
 Trunk Mats,
 Tire Cover
 & Jack Pack!
\$25.00

1965-73 Decals
 1965-73 Carpet
 Headliners \$25/ea.
 Gadget bag \$12/ea.
 Trunk Mats \$17/ea.
 1965-68 Door Panels
 Weatherstripping Kits
 Owner's Manuals \$5/ea.
 1965-73 Upholstery Kits
 Jack Pack plaid \$4.00/ea.
 Tire Cover plaid \$8.00/ea.
 Wiring Diagrams \$4.95/ea.
 Chrome Export Brace \$57.50
 Black Export Brace \$45.70
 1965-73 Heater Cores \$30.00
 1965-73 Rechromed Bumpers
 1965-66 Armrest Pads \$7.50/ea.
 1965-66 Armrest Bases \$5.00/ea.
 1971-72 Pop Open Gas Cap \$80.80
 1965-73 Rear Leaf Springs \$79.00/ea.
 1965-66 Window Regulators \$29.00/ea.

1965-68 Kick Panels \$27.00 pr
 Battery Tray 1965-66 \$11.60
 1967-68 \$14.50
 1971-73 \$11.60
 Convertible Top Repair Manual \$5.95
 Shop Manual 1965-68 \$29.00
 Floor Pans, Front 1965-70 \$36.95
 Rear 1965-70 \$32.95
 RH Battery Apron 1965-66 \$30.95
 1967-68 \$37.40
 LH Apron 1965-68 \$30.00
 Instrument Cluster Bezel

1965 Black Camera Case \$37.50
 1966 Black Camera Case \$31.50
 1965-66 Woodgrain \$39.50
 1967 Black Camera Case \$63.00

License Plate Frames 1965-73 \$6.75 pr
 Interior Lacquer Paint \$6.95
 Interior Vinyl Die \$6.95
 Pony Kick Panel Chrome \$21.00 pr.
 Radio Bezels 1967-68 \$39.20
 1969-70 Black \$27.00
 1969-70 Woodgrain \$33.00

Lower A-Arm w/Ball Joint 1965-66 \$51.55 ea.
 1967 \$61.20 ea.
 1968-70 \$39.50 ea.
 Coil Spring 1965-66 \$62.75/ea.
 1967-68 \$55.05 ea.

Vinyl Top Chrome 1965-66 \$80.00 pr.
 Vinyl Top Chrome 1967-68 \$60.00pr.
 Spring Saddles 1965-73 \$39.50 ea.
 Taillight Bezel 1965-66 \$14.25 ea.
 Taillight Lens 1965-66 \$4.50 ea.
 Taillight Body 1965-66 \$16.00ea.

Vinyl Tops 1965-73 \$54.70
 Watersheds 1965-73 Coupe/Conv. \$10.95
 1965-73 Fastback \$9.95

Drip Rail Mouldings 1965-68 Coupe \$69 pr.
 Dash Pads 1965 \$159.00
 1966 \$169.00
 1967-68 \$189.00
 1969-70 \$449.95
 1971-73, Black \$174.00

Windshield Weatherstrip 1965-68 \$22.95
 Rear Glass Weatherstrip 1965-68 Coupe \$22.95
 1965-70 Fastback \$29.00

Prices subject to changes w/o notice
Add 10% for Shipping and Handling
 (Minimum \$2.00)

FREE CATALOG

**MUSTANG
 PARTS
 CORRAL
 of TEXAS**



P.O. Box 210524, Dallas, TX 75211
 2100 E. Main St. #4A, Grand Prairie, TX 75050

MUSTANG POWER!
 EXACT REPRODUCTIONS • SUPERIOR QUALITY



\$118.00 24F

shipping \$15

- Mustang 1964-72
- Exact Reproduction
- Correct "OE" Label and Vent Caps
- 4-Year Warranty
- DRY-CHARGED Plates

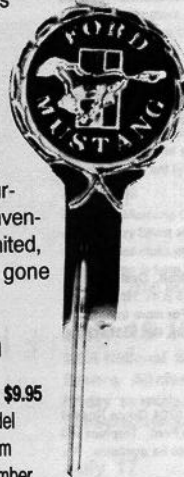


Battery Switch
\$12.95 Postage Paid

Bruce Falk MCA#30038
 1105 Nicholson, Joliet, IL 60435
 (815) 726-6455

Mustang Owners!

Jesser's Auto Clinic is offering Classic Keys for your Mustang. Jesser's found the 10-karat white gold plated keys by accident (originally manufactured 20 years ago) and purchased the entire inventory. Supplies are limited, and when they're gone ...they're gone!



\$14.50 each

- Matching leather key fob \$9.95
- Specify year, Make & Model
- Red, Black or Blue Emblem
- Please include Phone Number

Emblem Keys for All American Cars

JESSER'S CLASSIC KEYS
 26 West Street dept. MCA
 Akron, Ohio 44303-2344

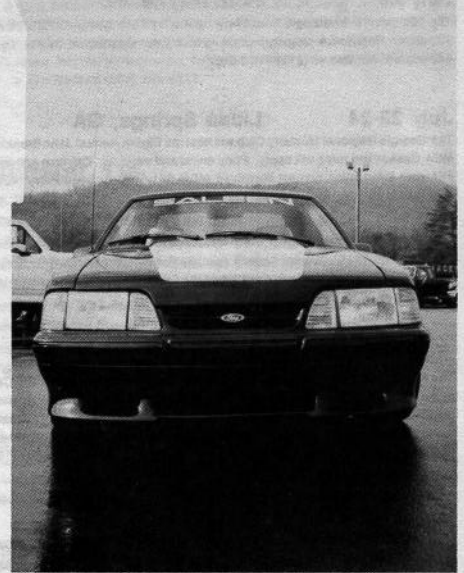
Phone orders 7 days, 9 am-9 pm EST

PH (216) 376-8181 • FAX (216) 384-9129

Visa, MC, Amex, Disc. (C.O.D.add \$7.00)

★ N.O.S. & OTHER COLLECTABLE KEYS AVAILABLE ★

PSSST! Listen Up!



This Is Your Magazine And We Need Your Help...

As a concerned and dedicated **Mustang Club of America** member, you understand the importance of teamwork to the survival to any organization. To bring you the best club magazine in the business, we need your help. You don't have to be a seasoned automotive writer, nor do you have to have a degree in photography.

So What Does It Take?

It takes the capacity to care about your **Mustang Times** monthly magazine - the **only** monthly national club magazine in the hobby. We want to hear about your experiences. **So Write About Them.** And we would like to see what the experience was like. **So Please Shoot Some Photographs About Them.**

We want to hear from you. If you have any questions, please call Jerry Gilbert (404) 992-4344, or Jim Smart at (213) 782-2323.