

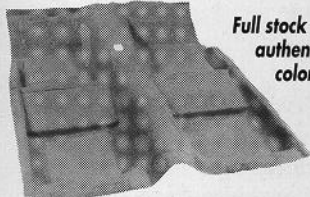
1-3 Days From Our Store to Your Door

No other supplier matches our quality, speed or inventory!

Most of our customers receive their parts only 1 to 3 business days after placing their phone order.



That's because we ship from 4 fully-stocked warehouses — each strategically located to serve the nation **faster**.

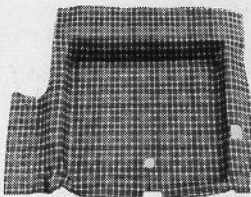


Full stock of authentic colors!

OEM STYLE MOLDED CARPETS

OEM 2-pc construction with 1/2" jute pad.
'65-73 Std **\$84.95**; '69 Mach 1 **\$159.95**;
'70-73 Mach 1 **\$145**

Plaid or Speckled concours quality



MOLDED RUBBER TRUNK MATS

With heavy gauge rubber—only **\$39.95**
Vinyl Mats **\$16.95**; Tire Covers **\$9.95**

DASH PADS

CONCOURS IDENTICAL TO OEM
'65-66 5 colors **\$149.95**; '69-70 Black: non-AC **\$394.95**; w/AC **\$414.95**



JAMMIN!

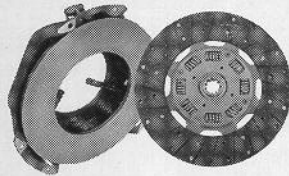
JVC & Kenwood AM/FM cassette decks modified to fit your factory dash. Starting at only **\$149.95**.
Dual dash speakers only **\$33.95**



INSTRUMENT BEZELS from **\$29.95**

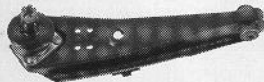
CONSOLE TRIM PLATES

Excellent reproductions now in stock!
Shift plates only **\$74.95**
Console trim plates only **\$134.95**
Prices subject to change without notice. Ad expires 4/94



PRESSURE PLATES & DISCS

All years and sizes in stock. Call NPD for the lowest prices anywhere.

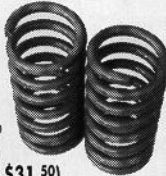


OEM CONTROL ARMS

Lower: '65-66 **\$42.95**; '67 **\$57**; '68-73 **\$45.95**
Upper: '65-66 **\$129.95**; '67-73 **\$119.95**

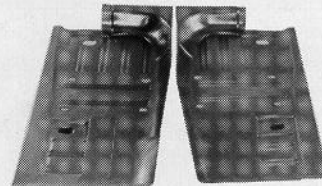
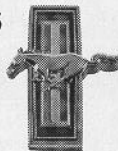
H.D. COILS

Blue PVC-coated high-rate springs only **\$66.50** pair. (We also sell the only correct repro coil spring saddles which are tested to OEM specs! **\$31.50**)



CONCOURS EMBLEMS & ORNAMENTS

Tap into the largest selection of show-winning chrome emblems and ornaments when you order our free catalog.



FLOOR PANS

'65-73 Full length US-Made **\$69.95**; '71-73 Trunk floors-UPSable **\$122.95**

WORLD'S BEST REPRO BUMPERS

'65-68 FT or RR **\$77.95**; '69-70 FT or RR **\$84.95**;
'71-72 FT chrome **\$174.95**; '71-73 RR **\$179.95**
Deluxe 30-pc bolt kit **\$11.50**



CONCOURS WEATHERSTRIPPING

Don't saddle your pony with cheap rubber! Buy NPD Quality!
Siderail Siderail Conv Trunk Trunk
Door Cpe FB Top Kit Cpe/Cnv FB
'65-66 15.95 24.95 47.95 99.95 9.95 9.95
'67-68 23.95 24.95 44.95 99.95 9.95 9.95
'69-70 27.95 49.95 89.95 179.95 9.95 12.95
'71-73 59.95 49.95 49.95 189.95 15.95 15.95

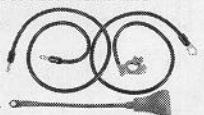


REPRODUCTION BODY PANELS

	Fender	Hood	Quarter		
'65-66	\$119.95	\$144.50	cp/cnv \$109.95		
'67-68	\$129.95	w/ind \$154.95	•		
		w/o ind \$159.95	•		
'69-70	\$139.95	•	•		
	Quarter Face Panel	Tail Light Panel	Front Valance	Rear Valance	Trunk Lid
'65-68	\$69.95	\$44.95	\$34.95	\$37.95	\$148.50
'69	\$99.95	\$94.50	\$69.95	\$44.95	
'70	\$99.95	\$79.95	\$69.95	\$44.95	
'71-73	\$79.95	\$99.95	\$131.95	\$54.95	

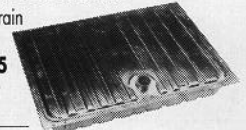
CONCOURS BATTERY CABLES

New MCA approved cables are correct in every respect.
Only **\$49.95** set



US-MADE FUEL TANKS

'65-68 w/o drain **\$99.95**;
w/drain **\$125**
'69 **\$185.75**;
'70 **\$204.37**



Open 7 Days: M-F 8am-9pm;
Sat 8am-5pm; Sun 11am-5pm



◆ California store

1376 Walter St. #1 • Ventura, CA 93003
local (toll) 805-654-0468
toll free all states 800-235-3445

◆ Michigan store

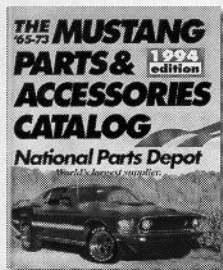
12788 Currie Ct. • Livonia, MI 48150
local (toll) 313-591-1956
toll free out of state 800-521-6104

◆ N. Carolina store

2330 Tipton Dr. #800 • Charlotte, NC 28206
local (toll) 704-331-0900
toll free all states 800-368-6451

◆ Florida store

3101 SW 40th Blvd. • Gainesville, FL 32608
local (toll) 904-378-2473
toll free all states 800-874-7595



The world's largest supplier of '65-73 Mustang parts & accessories offers it's comprehensive catalog **Free!**
Just call our 24-hour catalog hotline:
904-378-9000

Or write:

NPD 65-73 Mustang Parts Catalog
3101 SW 40th Blvd., GNV, FL 32608

National Parts Depot

World's Largest Supplier