

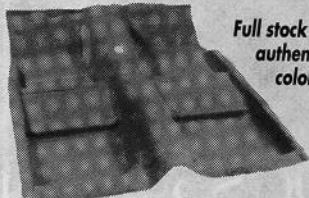
1-3 Days From Our Store to Your Door

No other supplier matches our quality, speed or inventory!

Most of our customers receive their parts only 1 to 3 business days after placing their phone order.



That's because we ship from 4 fully-stocked warehouses — each strategically located to serve the nation **faster**.

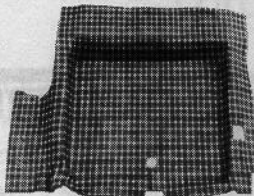


Full stock of authentic colors!

OEM STYLE MOLDED CARPETS

OEM 2-pc construction with 1/2" jute pad.
'65-73 Std \$84.95; '69 Mach 1 \$159.95;
'70-73 Mach 1 \$145

Plaid or Speckled concours quality



MOLDED RUBBER TRUNK MATS

With heavy gauge rubber—only \$39.95
Vinyl Mats \$16.95; Tire Covers \$9.95

DASH PADS



CONCOURS Identical to OEM

'65-66 5 colors \$149.95; '69-70 Black; non-AC \$394.95; w/AC \$414.95



JAMMIN!

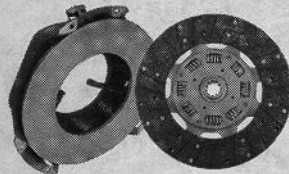
JVC & Kenwood AM/FM cassette decks modified to fit your factory dash. Starting at only \$149.95. Dual dash speakers only \$33.95



INSTRUMENT BEZELS from \$29.95

CONSOLE TRIM PLATES

Excellent reproductions now in stock!
Shift plates only \$74.95
Console trim plates only \$134.95
Prices subject to change without notice. Ad expires 4/94



PRESSURE PLATES & DISCS

All years and sizes in stock. Call NPD for the lowest prices anywhere.



OEM CONTROL ARMS

Lower: '65-66 \$42.95; '67 \$57; '68-73 \$45.95
Upper: '65-66 \$129.95; '67-73 \$119.95

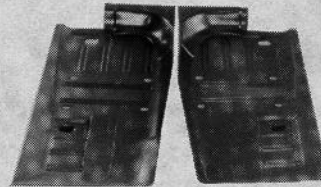
H.D. COILS

Blue PVC-coated high-rate springs only \$66.50 pair. (We also sell the only correct repro coil spring saddles which are tested to OEM specs! \$31.50)



CONCOURS EMBLEMS & ORNAMENTS

Tap into the largest selection of show-winning chrome emblems and ornaments when you order our free catalog.



FLOOR PANS

'65-73 Full length US-Made \$69.95; '71-73 Trunk floors-UPSable \$122.95

WORLD'S BEST REPRO BUMPERS

'65-68 FT or RR \$77.95; '69-70 FT or RR \$84.95; '71-72 FT chrome \$174.95; '71-73 RR \$179.95
Deluxe 30-pc bolt kit \$11.50



CONCOURS WEATHERSTRIPPING

Don't saddle your pony with cheap rubber! Buy NPD Quality! Siderail Siderail Conv Trunk Trunk
Door Cpe FB Top Kit Cpe/Cnv FB
'65-66 15.95 24.95 47.95 99.95 9.95 9.95
'67-68 23.95 24.95 44.95 99.95 9.95 9.95
'69-70 27.95 49.95 89.95 179.95 9.95 12.95
'71-73 59.95 49.95 49.95 189.95 15.95 15.95



REPRODUCTION BODY PANELS

	Fender	Hood	Quarter
'65-66	\$119.95	\$144.50	cp/cnv \$109.95
'67-68	\$129.95	w/ind \$154.95	•
		w/o ind \$159.95	•
'69-70	\$139.95	•	•

	Quarter Face Panel	Tail Light Panel	Front Valance	Rear Valance	Trunk Lid
'65-68	\$69.95	\$44.95	\$34.95	\$37.95	\$148.50
'69	\$99.95	\$94.50	\$69.95	\$44.95	•
'70	\$99.95	\$79.95	\$69.95	\$44.95	•
'71-73	\$79.95	\$99.95	\$131.95	\$54.95	•

CONCOURS BATTERY CABLES

New MCA approved cables are correct in every respect. Only \$49.95 set



US-MADE FUEL TANKS

'65-68 w/o drain \$99.95;
w/drain \$125
'69 \$185.75;
'70 \$204.37



Open 7 Days: M-F 8am-9pm;
Sat 8am-5pm; Sun 11am-5pm



◆ California store

1376 Walter St. #1 • Ventura, CA 93003
local (toll) 805-654-0468
toll free all states 800-235-3445

◆ Michigan store

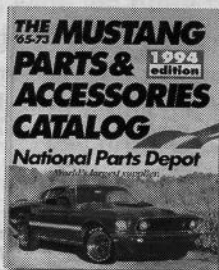
12788 Currie Ct. • Livonia, MI 48150
local (toll) 313-591-1956
toll free out of state 800-521-6104

◆ N. Carolina store

2330 Tipton Dr. #800 • Charlotte, NC 28206
local (toll) 704-331-0900
toll free all states 800-368-6451

◆ Florida store

3101 SW 40th Blvd. • Gainesville, FL 32608
local (toll) 904-378-2473
toll free all states 800-874-7595



The world's largest supplier of '65-73 Mustang parts & accessories offers it's comprehensive catalog **Free!**
Just call our 24-hour catalog hot line:

904-378-9000

Or write:

NPD 65-73 Mustang Parts Catalog
3101 SW 40th Blvd., GNV, FL 32608

National Parts Depot

World's Largest Supplier