

1-3 Days From Our Store to Your Door

No other supplier matches our quality, speed or inventory!

Most of our customers receive their parts only 1 to 3 business days after placing their phone order.



That's because we ship from 4 fully-stocked warehouses — each strategically located to serve the nation **faster**.



AUTOLITE "STA-FUL" BATTERY

New higher output version for performance engines in the same case as the standard grp 24 battery! Only **\$124.95+ shpg.** Standard group 24 available at **\$99.95+ shpg.**



INSTRUMENT BEZELS

'65-68 from **\$29.95**. Black, woodgrain and aluminum inserts available.



Full stock of authentic colors!

OEM STYLE MOLDED CARPETS

OEM 2-pc construction with 1/2" jute pad. '65-73 Std **\$84.95**; '69 Mach 1 **\$159.95**; '70-73 Mach 1 **\$145**

DASH PADS



CONCOURS Beautiful Repros!

'65-66 5 colors **\$149.95**. 67-73 also available!

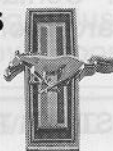


JAMMIN!

JVC & Kenwood AM/FM cassette decks modified to fit your factory dash. Starting at only **\$149.95**. Dual dash speakers from **\$33.95**

CONCOURS EMBLEMS & ORNAMENTS

Tap into the largest selection of show-winning chrome emblems and ornaments when you order our free catalog.



OEM CONTROL ARMS

Lower: '65-66 **\$49.95**; '67 **\$57.50**; '68-73 **\$43.95**
Upper: '65-66 **\$124.95**; '67-73 **\$119.95**.
(We also sell the only correct repro coil spring saddles which are tested to OEM specs! **\$33.50**)



WORLD'S BEST REPRO BUMPERS

'65-68 FT or RR **\$77.95**; '69-70 FT or RR **\$84.95**;
'71-72 FT chrome **\$159.95**; '71-73 RR **\$159.95**
Deluxe 30-pc bolt kit **\$11.50**



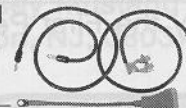
CONCOURS WEATHERSTRIPPING

Don't saddle your pony with cheap rubber. Buy NPD's quality weatherstripping and see the difference.

	Siderail	Siderail	Conv	Trunk	Trunk
	Door	Cpe	FB	Top Kit	Cpe/Cnv
'65-66	15.95	19.95	47.95	99.95	9.95
'67-68	23.95	24.95	44.95	99.95	9.95
'69-70	27.95	49.95	79.95	179.95	9.95
'71-73	59.95	49.95	49.95	199.95	15.95

CONCOURS BATTERY CABLES

New MCA approved cables are correct in every respect. Only **\$49.95** set



US-MADE FUEL TANKS

'65-68 w/o drain **\$99.95**;
w/drain **\$125**
'69 **\$204.78**;
'70 **\$225.32**



REPRODUCTION BODY PANELS

	Fenders	Hood	Quarter		
'65-66	\$119.95	\$144.50	cpe/cnv \$129.95		
'67-68	\$129.95	w/ind \$154.95	•		
		w/o ind \$159.95	•		
'69-70	\$139.95	•	•		
	Quarter	Tail Light	Front	Rear	Trunk
	Face Panel	Panel	Valance	Valance	Lid
'65-66	\$69.95	\$44.95	\$34.95	\$37.95	\$148.50
'67-68	\$69.95	\$44.95	\$34.95	\$37.95	
'69	\$129.95	\$94.50	\$69.95	\$44.95	
'70	\$99.95	\$79.95	\$69.95	\$44.95	
'71-73	\$79.95	\$99.95	\$131.95	\$54.95	

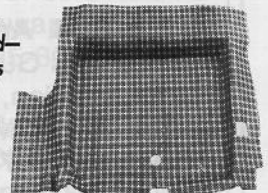
REVIVE YOUR BUNS!! NEW-HIGH BACK SEAT FOAM

'69-70 Standard or Mach 1 only **\$114.95**;
'71-73 **\$126.95**
Standard lo-back foam available for '65-69 at **\$49.95**
Prices listed per seat.



Best seat buns on the market!

Plaid or Speckled—concoors quality!

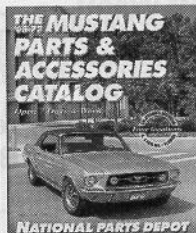


MOLDED RUBBER TRUNK MATS

Plaid heavy gauge rubber **\$39.95**
CLOTH BURTEX TRUNK MATS
Show quality, spatter design **\$89.95**

STEERING WHEELS

Wide selection of '65-66 repro wheels in original colors for generator or alternator cars. Prices start at **\$129.95**



CALL FOR OUR NEW 1995 EDITION! MANY NEW ITEMS

FREE '65-73 Mustang parts & accessories catalog! Call our 24-hour catalog hot line: **904-378-9000**

Or write:
NPD '65-73 Mustang Parts Catalog
3101 SW 40th Blvd., GNV, FL 32608

Prices listed in this advertisement are catalog prices and are subject to change without notice.

Open 7 Days: M-F 8am-9pm;
Sat 8am-5pm; Sun 11am-5pm



◆ California store

1376 Walter St. #1 • Ventura, CA 93003
local (toll) 805-654-0468
toll free all states 800-235-3445

◆ Michigan store

12788 Currie Ct. • Livonia, MI 48150
local (toll) 313-591-1956
toll free out of state 800-521-6104

◆ N. Carolina store

2330 Tipton Dr. #800 • Charlotte, NC 28206
local (toll) 704-331-0900
toll free all states 800-368-6451

◆ Florida store

3101 SW 40th Blvd. • Gainesville, FL 32608
local (toll) 904-378-2473
toll free all states 800-874-7595

National Parts Depot

World's Largest Supplier