

# 1-3 Days From Our Store to Your Door

No other supplier matches our quality, speed or inventory!

Most of our customers receive their parts only 1 to 3 business days after placing their phone order.



That's because we ship from 4 fully-stocked warehouses — each strategically located to serve the nation **faster**.



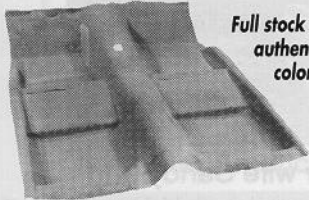
## AUTOLITE "STA-FUL" BATTERY

New higher output version for performance engines in the same case as the standard grp 24 battery! Only **\$124.95+ shpg.** Standard group 24 available at **\$99.95+ shpg.**



## INSTRUMENT BEZELS

'65-68 from **\$29.95**. Black, woodgrain and aluminum inserts available.



Full stock of authentic colors!

## OEM STYLE MOLDED CARPETS

OEM 2-pc construction with 1/2" jute pad. '65-73 Std **\$84.95**; '69 Mach 1 **\$159.95**; '70-73 Mach 1 **\$145**

## DASH PADS



**CONCOURS**  
Beautiful Repros!

'65-66 5 colors **\$149.95**. 67-73 also available!

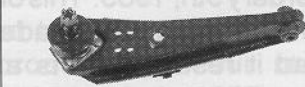
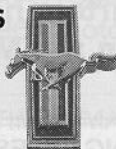


## JAMMIN!

JVC & Kenwood AM/FM cassette decks modified to fit your factory dash. Starting at only **\$149.95**. Dual dash speakers from **\$33.95**

## CONCOURS EMBLEMS & ORNAMENTS

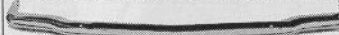
Tap into the largest selection of show-winning chrome emblems and ornaments when you order our free catalog.



## OEM CONTROL ARMS

Lower: '65-66 **\$49.95**; '67 **\$57.50**; '68-73 **\$43.95**  
Upper: '65-66 **\$124.95**; '67-73 **\$119.95**.  
(We also sell the only correct repro coil spring saddles which are tested to OEM specs! **\$33.50**)

## WORLD'S BEST REPRO BUMPERS



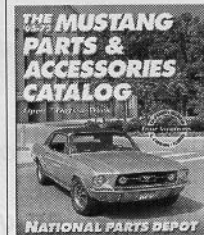
'65-68 FT or RR **\$77.95**; '69-70 FT or RR **\$84.95**;  
'71-72 FT chrome **\$159.95**; '71-73 RR **\$159.95**  
Deluxe 30-pc bolt kit **\$11.50**



## CONCOURS WEATHERSTRIPPING

Don't saddle your pony with cheap rubber. Buy NPD's quality weatherstripping and see the difference.

	Siderail	Siderail	Conv	Trunk	Trunk
	Door	Cpe	FB	Top Kit	Cpe/Cnv
65-66	15.95	19.95	47.95	99.95	9.95
67-68	23.95	24.95	44.95	99.95	9.95
69-70	27.95	49.95	79.95	179.95	12.95
71-73	59.95	49.95	49.95	199.95	15.95



CALL FOR OUR NEW 1995 EDITION! MANY NEW ITEMS

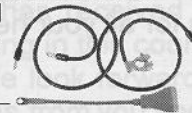
**FREE** '65-73 Mustang parts & accessories catalog! Call our 24-hour catalog hot line: **904-378-9000**

Or write:  
NPD '65-73 Mustang Parts Catalog  
3101 SW 40th Blvd., GNV, FL 32608

Prices listed in this advertisement are catalog prices and are subject to change without notice.

## CONCOURS BATTERY CABLES

New MCA approved cables are correct in every respect. Only **\$49.95** set



## US-MADE FUEL TANKS

'65-68 w/o drain **\$99.95**;  
w/drain **\$125**  
'69 **\$204.78**;  
'70 **\$225.32**



## REPRODUCTION BODY PANELS

	Fenders	Hood	Quarter		
'65-66	\$119.95	\$144.50	cpe/cnv \$129.95		
'67-68	\$129.95	w/ind \$154.95	•		
		w/o ind \$159.95	•		
'69-70	\$139.95	•	•		
	Quarter	Tail Light	Front	Rear	Trunk
	Face Panel	Panel	Valance	Valance	Lid
'65-66	\$69.95	\$44.95	\$34.95	\$37.95	\$148.50
'67-68	\$69.95	\$44.95	\$34.95	\$37.95	
'69	\$129.95	\$94.50	\$69.95	\$44.95	
'70	\$99.95	\$79.95	\$69.95	\$44.95	
'71-73	\$79.95	\$99.95	\$131.95	\$54.95	

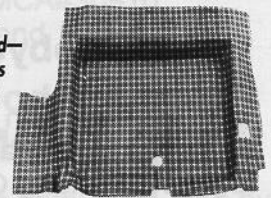
## REVIVE YOUR BUNS!! NEW-HIGH BACK SEAT FOAM

'69-70 Standard or Mach 1 only **\$114.95**;  
'71-73 **\$126.95**  
Standard lo-back foam available for '65-69 at **\$49.95**  
Prices listed per seat.



Best seat buns on the market!

Plaid or Speckled—concours quality!



## MOLDED RUBBER TRUNK MATS

Plaid heavy gauge rubber **\$39.95**  
CLOTH BURTEX TRUNK MATS  
Show quality, spatter design **\$89.95**

## STEERING WHEELS

Wide selection of '65-66 repro wheels in original colors for generator or alternator cars. Prices start at **\$129.95**



Open 7 Days: M-F 8am-9pm;  
Sat 8am-5pm; Sun 11am-5pm



## California store

1376 Walter St. #1 • Ventura, CA 93003  
local (toll) 805-654-0468  
toll free all states 800-235-3445

## Michigan store

12788 Currie Ct. • Livonia, MI 48150  
local (toll) 313-591-1956  
toll free out of state 800-521-6104

## N. Carolina store

2330 Tipton Dr. #800 • Charlotte, NC 28206  
local (toll) 704-331-0900  
toll free all states 800-368-6451

## Florida store

3101 SW 40th Blvd. • Gainsville, FL 32608  
local (toll) 904-378-2473  
toll free all states 800-874-7595

# National Parts Depot

World's Largest Supplier