

1-3 Days From Our Store to Your Door

No other supplier matches our quality, speed or inventory!

Most of our customers receive their parts only 1 to 3 business days after placing their phone order.



That's because we ship from 4 fully-stocked warehouses — each strategically located to serve the nation **faster**.

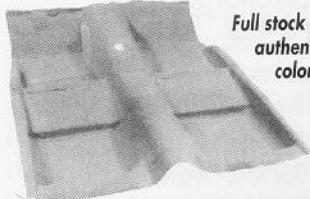


AUTOLITE "STA-FUL" BATTERY

New higher output version for performance engines in the same case as the standard grp 24 battery! Only \$124.95+ shpg. Standard group 24 available at \$99.95+ shpg.



INSTRUMENT BEZELS
'65-68 from \$29.95. Black, woodgrain and aluminum inserts available.



Full stock of authentic colors!

OEM STYLE MOLDED CARPETS

OEM 2-pc construction with 1/2" jute pad. '65-73 Std \$84.95; '69 Mach 1 \$159.95; '70-73 Mach 1 \$145

DASH PADS



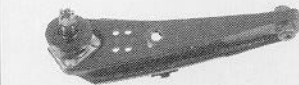
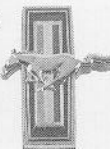
CONCOURS Beautiful Repros!
'65-66 5 colors \$149.95. 67-73 also available!



JAMMIN!
JVC & Kenwood AM/FM cassette decks modified to fit your factory dash. Starting at only \$149.95. Dual dash speakers from \$33.95

CONCOURS EMBLEMS & ORNAMENTS

Tap into the largest selection of show-winning chrome emblems and ornaments when you order our free catalog.



OEM CONTROL ARMS

Lower: '65-66 \$49.95; '67 \$57.50; '68-73 \$43.95
Upper: '65-66 \$124.95; '67-73 \$119.95.
(We also sell the only correct repro coil spring saddles which are tested to OEM specs! \$33.50)

WORLD'S BEST REPRO BUMPERS

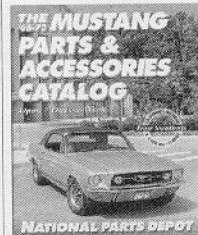
'65-68 FT or RR \$77.95; '69-70 FT or RR \$84.95;
'71-72 FT chrome \$159.95; '71-73 RR \$159.95
Deluxe 30-pc bolt kit \$11.50



CONCOURS WEATHERSTRIPPING

Don't saddle your pony with cheap rubber. Buy NPD's quality weatherstripping and see the difference.

	Sidairail	Sidairail	Conv	Trunk	Trunk
	Door	Cpe	FB	Top Kit	Cpe/Cnv
'65-66	15.95	19.95	47.95	99.95	9.95
'67-68	23.95	24.95	44.95	99.95	9.95
'69-70	27.95	49.95	79.95	179.95	12.95
'71-73	59.95	49.95	49.95	199.95	15.95



CALL FOR OUR NEW 1995 EDITION! MANY NEW ITEMS

FREE '65-73 Mustang parts & accessories catalog! Call our 24-hour catalog hot line: **904-378-9000**

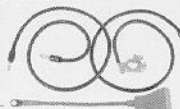
Or write:

NPD '65-73 Mustang Parts Catalog
3101 SW 40th Blvd., GNV, FL 32608

Prices listed in this advertisement are catalog prices and are subject to change without notice.

CONCOURS BATTERY CABLES

New MCA approved cables are correct in every respect. Only \$49.95 set



US-MADE FUEL TANKS

'65-68 w/o drain \$99.95;
w/drain \$125
'69 \$204.78;
'70 \$225.32



REPRODUCTION BODY PANELS

	Fenders	Hood	Quarter		
'65-66	\$119.95	\$144.50 cpe/cnv	\$129.95		
'67-68	\$129.95	w/ind \$154.95	•		
		w/o ind \$159.95	•		
'69-70	\$139.95	•	•		
	Quarter	Tail Light	Front	Rear	Trunk
	Face Panel	Panel	Valance	Valance	Lid
'65-66	\$69.95	\$44.95	\$34.95	\$37.95	\$148.50
'67-68	\$69.95	\$44.95	\$34.95	\$37.95	
'69	\$129.95	\$94.50	\$69.95	\$44.95	
'70	\$99.95	\$79.95	\$69.95	\$44.95	
'71-73	\$79.95	\$99.95	\$131.95	\$54.95	

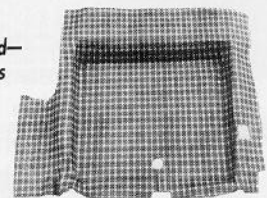
REVIVE YOUR BUNS!! NEW-HIGH BACK SEAT FOAM

'69-70 Standard or Mach 1 only \$114.95;
'71-73 \$126.95
Standard lo-back foam available for '65-69 at \$49.95
Prices listed per seat.



Best seat buns on the market!

Plaid or Speckled—concours quality!



MOLDED RUBBER TRUNK MATS

Plaid heavy gauge rubber \$39.95
CLOTH BURTEX TRUNK MATS
Show quality, spatter design \$89.95

STEERING WHEELS

Wide selection of '65-66 repro wheels in original colors for generator or alternator cars. Prices start at \$129.95



Open 7 Days: M-F 8am-9pm;
Sat 8am-5pm; Sun 11am-5pm



◆ California store

1376 Walter St. #1 • Ventura, CA 93003
local (toll) 805-654-0468
toll free all states 800-235-3445

◆ Michigan store

12788 Currie Ct. • Livonia, MI 48150
local (toll) 313-591-1956
toll free out of state 800-521-6104

◆ N. Carolina store

2330 Tipton Dr. #800 • Charlotte, NC 28206
local (toll) 704-331-0900
toll free all states 800-368-6451

◆ Florida store

3101 SW 40th Blvd. • Gainesville, FL 32608
local (toll) 904-378-2473
toll free all states 800-874-7595

National Parts Depot

World's Largest Supplier