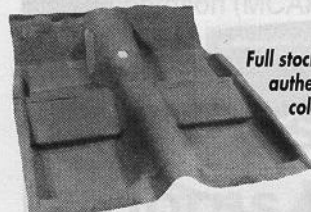


\*1 to 3 business-day delivery to most of the USA when order is placed from store nearest destination.

# Fast 1-3 Day\* Delivery & Low Shipping Rates!



Copyright © 1995 by National Parts Depot



Full stock of authentic colors!

### OEM STYLE MOLDED CARPETS

OEM 2-pc construction with 1/2" jute pad. '65-73 Std \$84.95; '69 Mach 1 \$159.95; '70-73 Mach 1 \$145

### DASH PADS



CONCOURS Beautiful Repros!

'65-66 5 colors \$149.95; '67-68 \$169.95; '69-70 W/o AC \$489.95; '71-73 \$158.95



### JAMMINI

JVC & Kenwood AM/FM cassette decks modified to fit your factory dash. Starting at only \$149.95. Dual dash speakers from \$22.95



### WORLD'S BEST REPRO BUMPERS

'65-68 FT or RR \$77.95; '69-70 FT or RR \$84.95; '71-72 FT chrome \$159.95; '71-73 RR \$159.95

### FINALLY! VENT WINDOW FRAMES-

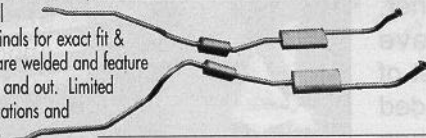
We now have available excellent die-cast repros of this long sought after part. Triple chrome-plated and show ready! Manufacturer supplies LIFETIME guarantee for fit, finish and plating. \$329.95/pair



Beautiful chrome-work!

### STAINLESS STEEL EXHAUST SYSTEMS

We are proud to offer the discriminating driver or restorer these quality, 304-stainless pipe kits and mufflers for 15 different single and dual exhaust applications! Copied from originals for exact fit & appearance. Mufflers and resonators are welded and feature complete use of stainless steel — inside and out. Limited mfr. lifetime warranty. Call for applications and pricing. Stainless clamps also available.



### CONTROL ARMS

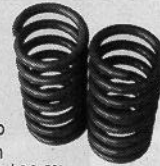


Lower: '65-66 \$49.95; '67 \$58.75; '68-73 \$45.95

Upper: '65-66 \$94.95; '67-73 \$92.95. (We also sell the only correct repro coil spring saddles which are tested to OEM specs! \$38.50)

### H.D. COILS

Blue PVC-coated high-rate springs only \$66.50 pair. (We also sell the only correct repro coil spring saddles which are tested to OEM specs! \$38.50)



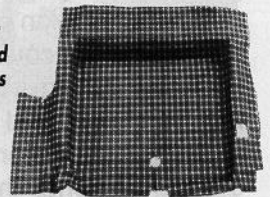
**FREE UPS SHIPPING on orders over \$250**

### WHEEL HUB

Fits '65-67's with V-8. This front hub has been very hard to find-until now! Requires new studs to stake hub to your drum. New bearings, races, studs and drums avail separately. \$74.95/hub



Plaid or Speckled concours quality



### MOLDED RUBBER TRUNK MATS

Plaid heavy gauge rubber \$39.95

### CLOTH BURTEX TRUNK MATS

Show quality, spatter design \$89.95



### REPRO POP-OFF GAS CAPS.

Available March '96! We will offer 6 styles for '67-70.

Cap less emblem \$158.50; Emblem \$9.00. Call for further information.

### CONCOURS ROLLED-LIP

Super correct exhaust extension for '67-69's w/dual exhaust. Polished stainless! "Get correct" for \$89.95/pair.



### REPRODUCTION BODY PANELS

	Fenders	Hood	Quarter
'65-66	\$119.95	\$144.50 cpe/cmv	\$109.95
'67-68	\$159.95 w/ind	\$154.95	E. cpe \$224.95
	w/o ind	\$159.95	L. cpe \$249.95
'69-70	\$139.95		

	Quarter Face Panel	Tail Light Panel	Front Valance	Rear Valance	Trunk Lid
'65-66	\$69.95	\$57.95	\$34.95	\$37.95	\$148.50
'67-68	\$69.95	\$44.95	\$34.95	\$37.95	\$169.95
'69	CALL	\$94.50	\$69.95	CALL	
'70	CALL	\$79.95	\$69.95	CALL	
'71-73	\$79.95	\$99.95		CALL	

### FLOOR PANS

'65-73 Full length US-Made \$69.95; '71-73 Trunk floors-UPSable \$129.95

### AUTOLITE "STA-FUL" BATTERY

New higher output version for performance engines in the same case as the standard grp 24 battery! Only \$124.95+ shpg. Standard group 24 available at \$99.95+ shpg.



### SEAT TRACK ASSY'S

Complete the restoration of your seats! Tight, smooth-traveling seat tracks will enhance your driving pleasure by eliminating loose, rattling seats! \$69.95 /seat

## Open 7 days-a-week!

M-F 8am-9pm; Sat 8am-5pm; Sun 11am-5pm

## 4 fully-stocked warehouses!

### California store

1376 Walter St. #1 • Ventura, CA 93003  
local (toll) 805-654-0468  
toll free all states 800-235-3445

### N. Carolina store

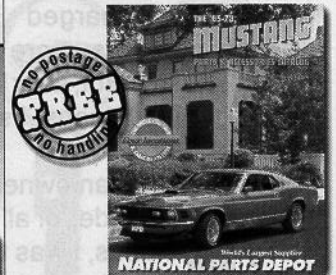
2330 Tipton Dr. #800 • Charlotte, NC 28206  
local (toll) 704-331-0900  
toll free all states 800-368-6451

### Michigan store

12788 Currie Ct. • Livonia, MI 48150  
local (toll) 313-591-1956  
toll free out of state 800-521-6104

### Florida store

3101 SW 40th Blvd. • Gainesville, FL 32608  
local (toll) 352-378-2473  
toll free all states 800-874-7595



## FREE CATALOG!

For your complimentary catalog call (352) 378-9000 24hrs, 7 days-a week. Or write: NPD '65-73 Mustang Parts Catalog 3101 SW 40th Blvd Gainesville, FL 32608

# NATIONAL PARTS DEPOT

World's Largest Supplier

Prices listed in this advertisement are catalog prices and are subject to change without notice.

