

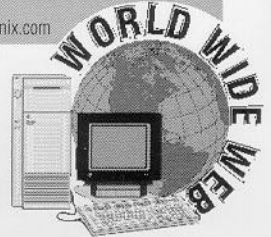
# Mustangs Unlimited

- ❖❖❖ **1-3 Day Shipping to most locations.**
- ❖❖❖ **Largest Selection in the industry.**
- ❖❖❖ **Serving Customers for over 20 years.**

5182-H Brook Hollow Pkwy  
Norcross, GA 30071  
(770) 446-1965  
24 HR FAX (770) 446-3055

185 Adams Street  
Manchester, CT 06040  
(860) 647-1965  
24 HR FAX (860) 649-1260

See Us On the World Wide Web  
www.mustang-unl.com  
E-MAIL: musunl@connix.com



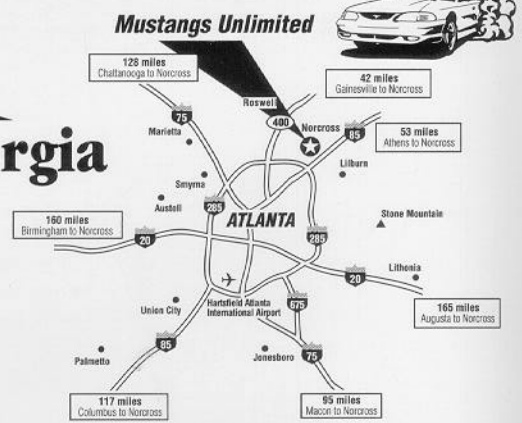
**Order Your Catalog Today!**



**1-800-243-7278**



## Connecticut



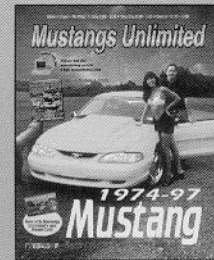
**Mon.-Fri. 8:00-9:00**  
**Sat. 8:00-5:00 • Sun. 12:00-5:00**

## New Catalogs for 1997



- Over 220 pages
- 72 pages of color
- 100's of new parts

**1965-73 Mustang & Shelby**  
More than 1,500 photographs and illustrations. Largest selection available anywhere! A must for any Mustang enthusiast. **Only \$3.00** EM21



**1974-97 Mustang**  
Order our latest catalog and see the largest selection of '74-97 performance, restoration and accessories parts. **Only \$3.00** LM21

Name: \_\_\_\_\_  
Street Address: \_\_\_\_\_  
City: \_\_\_\_\_  
State: \_\_\_\_\_ Zip: \_\_\_\_\_  
Day Phone: ( ) \_\_\_\_\_  
Year: \_\_\_\_\_ Make: \_\_\_\_\_ Model: \_\_\_\_\_  
Engine: \_\_\_\_\_ Trans: \_\_\_\_\_ Int. Color: \_\_\_\_\_

Qty	Description	Price
UPS Shipping • 10% \$4.00 Minimum		
Sales Tax • CT 6% • GA 5%		
C.O.D. (add \$5.00 per box)		
Residential Shipping Fee	\$2.00	
<b>TOTAL</b>		

Discover  MC  Visa  AM Express  Chk.  Money Order  
Exp. Date: \_\_\_\_\_ Prices subject to change.  
Acct. No: \_\_\_\_\_  
Signature: \_\_\_\_\_ **MT97**

### Cougar

Over 150 pages of original and reproduction parts for your Cougar. largest selection available anywhere!  
**Only \$3.00** CC20

