

REGIONAL GROUP CONTACTS

First Tennessee Regional Group
c/o Charles Carey, President
P. O. Box 26
Church Hill, Tennessee 37642

Don Wolfe, National Board

Mustang Club of Maryland
P. O. Box 23
Bel Aire, Maryland 21014

James B. Mundis

Scenic City Regional Group
5661 Grayshore Lane
Hixson, Tennessee 37343

John Henderson, President
& National Board

N. W. Ohio Regional Group
1418 Forester Drive
Oregon, Ohio 43616

Larry Graser, President
& National Board

Shenandoah Valley Mustang Club
Box 2286
Winchester, Virginia 22601

Robert Halterman, President
Jeff Feltner, National Board

First Piedmont Regional Group
Route 2, Box 7F
Glenwood Terrace
Stuart, Virginia 24171

Harold Goad, President
& National Board

Carolina Regional Mustang Club
P. O. Box 206
Harrisburg, North Carolina 28075

Hoyle Swaringen, President
Bill Harris, National Board

Treasure State Mustang Club
3630-5th Avenue, South
Great Falls, Montana 59405

Lee Cigler, President
W. Jan Lovac, National Board

The Big Sky Regional Group
Art Mulkey
Box 37-Blue Creek Road
Billings, Montana 59101

Hoosier Mustang Club
c/o Larry Westmeyer, President
2420 Sims Court
Apartment #29
Columbus, Indiana 47201

First Pennsylvania Regional
c/o W. J. Manson, II, President
520 Bethlehem Pike
Philadelphia, Pennsylvania 19118

Georgia Regional Group
c/o Lee Greenfield, President
2158 Willow Court
Grayson, Georgia 30221

Indy Mustangs
c/o G. G. Sexton, President
4821 Atwell
Lawrence, Indiana 46226

Leonard, Holloway, National Board

Southern Illinois Mustang Association
c/o Bill Camp
3716 Coronado Drive
Alton, Illinois 62002

Central South Carolina Regional
DeKay Moore, Jr., President
3306 Montcrest Road
Columbia, South Carolina 29210

The Pony Express
Randy Adams
3922 Covert Avenue
Evansville, Indiana 47715

Mustang Owners Club of Southeastern Michigan
1140 North Denwood
Dearborn, Michigan 48128

John Haskin, President
Jerry Ostalecki, National Board

National Capital Regional Mustang Club
Wayne Kvasnicka, President
7602 Mineral Springs Court
Springfield, Virginia 22153

Kansas City Mustang Club
2309 West 104th Street
Leawood, Kansas

Kert Maul, President

Mid-West Mustang Club
Bob Miller, President
P. O. Box 112
Lamont, Oklahoma 74643

Mustang Club of S. W. Michigan
P. O. Box 229
Niles, Michigan 49120

Jerry Sain, President

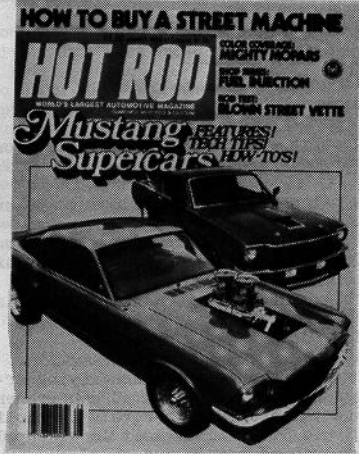
Gulf Coast Region of The Mustang Club
of America
Route 9, Box 265
Pensacola, Florida 32504
Bob McNeal, President

 Mile-Hi Mustangs
 c/o Gordon Campbell
 5189 South Williams Drive
 Littleton, Colorado 80121

 Central Illinois Regional Chapter of
 The Mustang Club of America
 c/o Bob Stelbrink
 825 Haynes Drive
 Decatur, Illinois

 Mustangs of Memphis
 c/o Charles H. Barnes
 3479 Suzanne Drive
 Memphis, Tennessee 38127

 The Foothills Regional Group of The
 Mustang Club of America
 c/o William E. Hooper
 106 Lake Fairchild Drive
 Greenville, South Carolina 29205



FOR MORE INFORMATION CONCERNING THE
 FORMING OF A REGIONAL GROUP IN YOUR
 AREA, CONTACT OUR NATIONAL REGIONAL
 GROUP DIRECTOR:

MAX EPPS
 ROUTE 6
 CHURCH HILL, TN. 37642

cont'd from Page 5

We appreciate your patience concerning
 the tardiness in mailing of the news-
 letter. This should be resolved in the
 August issue. This delay has been cre-
 ated due to the conversion to the color-
 ed front cover.

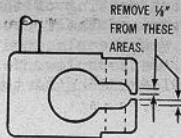
BATTERY POST CLAMPS

"Slow engine starter cranking" or "no starter action" can be
 caused by a loose cable clamp connection at the battery post.
 The loose connection, in some cases, is the result of an
 undersize battery post which prevents the battery cable
 clamp from completing a tight connection. This condition
 can be corrected by cutting approximately 1/4" off the bolt
 end stop of the battery cable clamp.

A visual inspection alone is not adequate to determine
 whether or not a satisfactory connection exists. Check the
 cable to post connection prior to replacing any electrical
 components, using the electrical charging system diagnosing
 procedure outlined in the appropriate Shop Manual.

If a faulty connection exists because of an undersize bat-
 tery post, the following procedure should be used to insure
 a tight connection.

1. Remove cable from vehicle and secure cable clamp in
 vise.
2. Use a hacksaw to remove approximately 1/4" from areas
 shown in Figure 2.
3. Check and clean cable and battery post if necessary.
4. Reinstall the cable, and tighten clamp bolt 55 inch-lbs.



WANTED
JUDGES
FOR
ATLANTA '79
GRAND NATIONAL

AUGUST 24-26, 1979

CONTACT:

GUS WINCHESTER

Days: (404) 296-3133

Nights: (404) 482-2179