

NPD[®]

we take the Frustration out of Restoration

NATIONAL PARTS DEPOT

1965-1973 MUSTANG



Mach 1 high-back bucket

The popularity of our 1965-67 Sport Seat conversions has prompted an expansion of the line to include the best yet! Using a 1969-70 Mach 1 high back bucket seat we have the foam and upholstery to convert them to a body hugging Sport Seat while retaining the unique Mach 1 upholstery style.

Front seat upholstery \$299.95 pair, foam kit \$94.95 per seat.

Latch assy, hood



Correctly detailed reproductions. 1967 has correct short style latch guide while 1968 has the Ford improved longer guide. Some very late production 67's may have received the 68 style latch.
 16700-5A (1967) \$79.95
 16700-6A (1968) \$79.95
 16700-7A (1969-70) \$59.95



Giant 2.5" or 3" mandrel bent stainless steel pipes with a true "X" pipe crossover and stainless steel high flow great sounding tuned mufflers. Better flow and more power than most other "Name" brands. Kits to fit 65-70 hardtops.
 5211 (36A, 37A) 2 1/2" pipes \$474.95
 5211 (36B, 37B) 3" pipes \$624.95

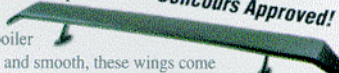
Plate, console shifter trim

Available in black or unpainted for non-black interiors. Meticulous attention is paid to correct contours and details for a perfect fit. Correctly stenciled for black interiors. Factory matched chrome. An excellent reproduction that's US made!
 044D90-4A/4B (71-73) \$154.95



Correct Reproduction Spoilers

Concours Approved!



1969-1970 and 1971-1973 Rear Spoiler
 Strong, lightweight and smooth, these wings come molded in semi-gloss black of ABS plastic with a structural foam core and could be installed as is if you desire. Diecast pedestals and stamped brackets have excellent detail and the whole assembly slides together perfectly. And finally, we supply concours correct fasteners from AMK products for a final, perfect, show winning touch. Dealer inquiries welcome! **Only \$119.95**

Fiberglass Hood, cowl induction style

All fiberglass with 3" cowl scoop.
 16612-1D (65-66) \$439.95
 16612-2D (67-68) \$439.95



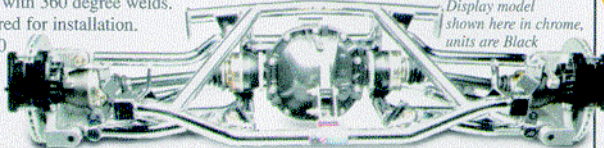
Radio, AM/FM, 1966 style reproduction 18000-10A



This excellent reproduction looks exactly like an original 1966 AM/FM Mustang radio but it hides its modern internals with 200 watts over 4 channels (50 watts per speaker channel), 4 speaker preouts, separate bass and treble control, fader, manual tuning. Utilizes a unique LED display that lights up behind the OE look dial. Unit has an auxiliary input for iPod®, MP3, satellite radio or CD changer. A perfect blend of vintage looks and new technology.

Independent Rear Suspension System

Incredible design uses the best and strongest parts available. 1000hp rated Formula 1 style axles, machined billet hub carrier with self-cooling race bearings, SSBC Force 10 calipers and slotted rotors, Ford 8.8" center section with custom stud girdle rear cover (internals-gears and posi are NOT included) Available in "race" version with heim joints or "street" version with polyurethane bushings. Design incorporates a built-in driveshaft loop, full length sub frame connectors and ride-height adjustable coil-over shocks. All tubing is 1 5/8" DOM seamless steel with 360 degree welds. Welding required for installation.
 From \$9450.00



Display model shown here in chrome, units are Black



Firewall panel

Complete assy's.

Perfect for a complete replacement or to section in as needed.
 01610-0A 1965-66 (\$172.95) 01610-0B 1967-68 (\$199.95).

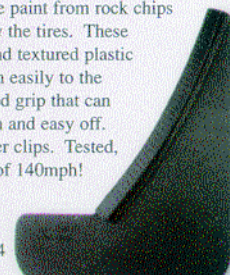


Show Car Splash Guards

Designed by a gentleman who shows concours level cars. He still enjoyed driving them but wanted an easy way to protect the paint from rock chips kicked up by the tires. These contoured and textured plastic guards attach easily to the fender lip with a soft rubber coated grip that can be adjusted for tightness. Easy on and easy off. No more messing with metal paper clips. Tested, on car, by the designer to speeds of 140mph! Includes convenient storage box.

16A550-1A (1965-66)
 16A550-2A (1967-68)
 16A550-3A (1969-70)
 16A550-4A (1971-73)

All Years are set of 4 \$49.95



Make sure to check out our 1948-1996 F-Series Ford Truck and Bronco catalog. Truck parts available through FL & NC stores only.

get your FREE Color Catalog

Call 352-378-9000 24-hrs or log onto our web site @

www.nationalpartsdepot.com

Download View online Order print Order CD

Ocala Florida 800-874-7595 • Canton Michigan 800-521-6104 • Ventura California 800-235-3445 • Charlotte N. Carolina 800-368-6451
 Local 352-861-8700 • 900 SW 38th Ave. Local 734-397-4683 • 2435 S. Haggerty Rd. Local 805-654-0468 • 1376 Walter St. #1 Local 704-331-0900 • 7000 MacFarlane Blvd.

Ford, F-series, Bronco & Mustang are trademarks of Ford Motor Company. All other trademarks remain the property of their respective companies. Prices and specifications are subject to change. Copyright © 2006 by National Parts Depot, All Rights Reserved.