



RESTORING AMERICAN HISTORY

NPD

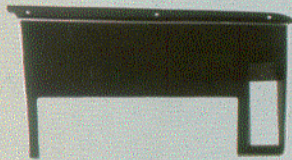
NATIONAL PARTS DEPOT

1965-1973 Mustang



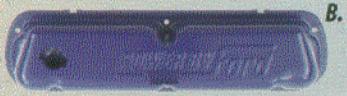
A.

A. BEZEL, INSTRUMENT CLUSTER, 1971-73 & Trim, Dash, RH side, 1971-72 & 1973
Excellent details with accurate pebble grain and chrome plating. Ready to install with stock gauges or our Dakota digital gauge package. Sold at \$109.95 Bezel 108883-1A. RH trim is \$84.95. Ask for 04338-4A for 1971-72 & 04338-5A for 1973.



B.

B. VALVE COVER, "Power By Ford" 1968-73
Now available to correctly detail the engine on your 1968-73 302, 351W. Correct contours and indentions for the discriminating restorer. Available in blue or custom chrome. Blue painted, pair, 6582-26, \$59.95
Chrome, pair, 6582-26A, \$99.95



C.

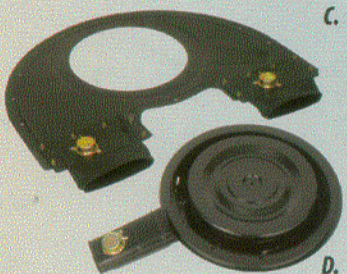
C. HOOD PLENUM ASSY, Ram-Air, 1971-73

D. AIR CLEANER ASSY, Ram-Air, 1971-73
Something new for the 1971-73 crowd. The 351C air cleaner has the lid and contours giving the repro the ability to convert a non-Ram-Air car. Pair this with the hood plenum that is complete with flappers and actuators and you have a nearly complete conversion. Filter, seal, hardware and vacuum hoses are also available to complete the conversion.
Ram-Air air cleaner assy, 9600-11A, \$249.95
Ram-Air hood plenum assy, 16613-4B, \$239.95



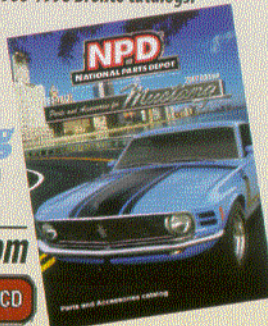
D.

E. GRILLE SET, Fastback Quarter Pillar, 1967-68
New reproduction is molded plastic that has excellent chrome and black painted insets. A great way to replace your dull or pitted originals. Sold per pair at \$109.95. Ask for part number 31006-7-2A.



E.

Make sure to check out our 1948-1979 F-Series Ford Truck, 1980-1996 F-Series Ford Truck and 1966-1996 Bronco catalogs.



F. ROTOR, FRONT DISC

Limited availability of this correctly reproduced part to fit 1969 Boss 302 and 1969-70 Shelby GT-350/500's. Exact details and perfect fit. US made. 1102-6 \$199.95



F.



G.

G. EXHAUST TRUMPET, High Flow Modified
These modified trumpets are designed for use with custom exhaust systems using larger diameter pipes. The exhaust tubes are 2" and can be expanded to 2 1/4" to easily mate up exhaust pipes as large as 2 1/2" (larger pipes will require some modifications). While still retaining the original GT exhaust trumpet look the "vents" have also been enlarged to allow more exhaust to flow through them as well. 5255-1-2C, \$99.95/pair

H. REAR WINDOW LOUVERS

New reproduction for 1969-70's are made on our own tooling and duplicate originals in every way possible. Louvers and latches are as original. Hinges are die cast and chromed with the correct contour and shape. These kits include all necessary parts to install on a car. \$349.95/set. Dealer inquiries invited!

Concours Approved! All Hardware Included!



H.

J. STENCIL KIT, Mach 1 Hood stripe

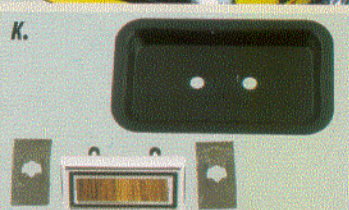
Kits include properly dimensioned stencils to correctly mark the outline of the stripes for painting. Available for 1970 Mach 1's with Cobra Jet style scoop or Shaker scoop and 1971-73 Mach 1.
1970 CJ scoop 16B906-3A1 (351), 16B906-3A2 (428), \$44.95
1970 shaker scoop 16B906-3B1 (351), 16B906-3B2 (428), \$64.95
1971-73 Mach 1 16B906-4A \$67.95



J.

K. SEAT BUTTON SET, Deluxe Interior 1969-70

It's nice that you no longer have to attempt to remove your old buttons without damaging it beyond the point of uselessness! These sets include two of each buttons & plates, 4 retainers and 2 each walnut inserts AND teak inserts! 1969 uses two buttons per seat while 1970 uses three buttons per front seat and two buttons per rear seat. Button set, pair, 64824-4B, \$12.50



K.

FREE Color Catalog

Call 24 Hours 352-378-9000

www.nationalpartsdepot.com

Download

View Online

Order Print

Order CD

FLORIDA Ocala 800-874-7595

800-521-6104

MICHIGAN Canton

Local 352-861-8700 - 900 SW 38th Ave.

Local 734-397-4569 - 2435 S. Haggerty Rd.

CALIFORNIA Ventura 800-235-3445

800-368-6451

N. CAROLINA Charlotte

Local 805-654-0468 - 1376 Walter St. #1

Local 704-331-0900 - 7000 MacFarlane Blvd.