

NXT Generation™

Wheels & Accessories

THE PERFECT FIT



Hood Lift Kit

Our new Hood Lift Kits are available in all popular OEM colors. The rigid design provides an effortless operation, a cleaner look & eliminates the stock prop rod.



Engine Dress-up Kit

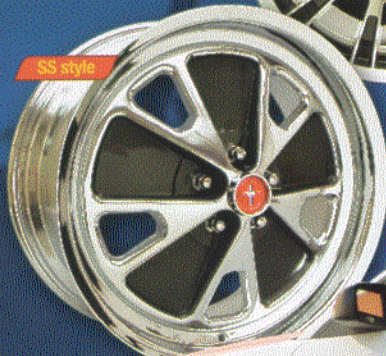
Improve the look with Cal Pony Cars' Fuel Rail & Fuse Box Cover kits.

Quality replacement wheels for early and late model Mustangs. Manufactured from premium quality, light weight cast aluminum. This SS style wheel is a beautiful chrome plated version of the original 14x5" steel wheel offered on 1965-'67 Mustangs. (Other styles available)

To Snake style



SS style



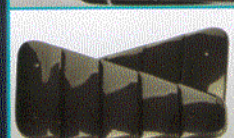
2005-'08

Interior Trim Pkg.

Two tone Console Cushion and Shifter Boot, screaming yellow w/ charcoal black. Two tone Door Handle, Headrest, emergency brake accents. Available in all popular OEM colors



Chrome tailight bezel



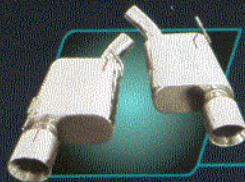
Removable Window Louvers



Shock Tower Covers

Molded in black textured finish to match OEM radiator cover panel

"Now in stock!"
Rear Window Wings



Add style and increase performance
T304 stainless steel axle back exhaust for 2005-08 Mustang GT 4.6 liter, fully polished from end to end with double wall tips



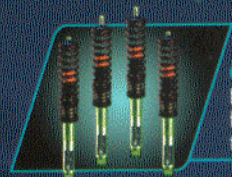
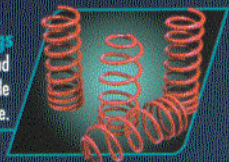
GT Badge

Early model retro-fitted badge fits your late model Mustang for that classic look



Cold Air Intake Box
Adds style and performance to your 2005-08 Mustang GT. It can also add up to 18 hp and increase your mileage up to 1.5 miles per gal.

Lowering Sport Springs
Offers true vehicle fitment and performance for a comfortable quality ride.



Coil-Over Springs

Height adjustable (1-3" range) suitable for track, yet comfortable enough for the street

Your #1 source

CPC CALIFORNIA PONY CARS™

Manufacturing quality Mustang parts & accessories for over 25 years!



888/225-7669
909/923-2804
Fax: 909/923-2868

VISIT US ON THE WEB:

calponycars.com

