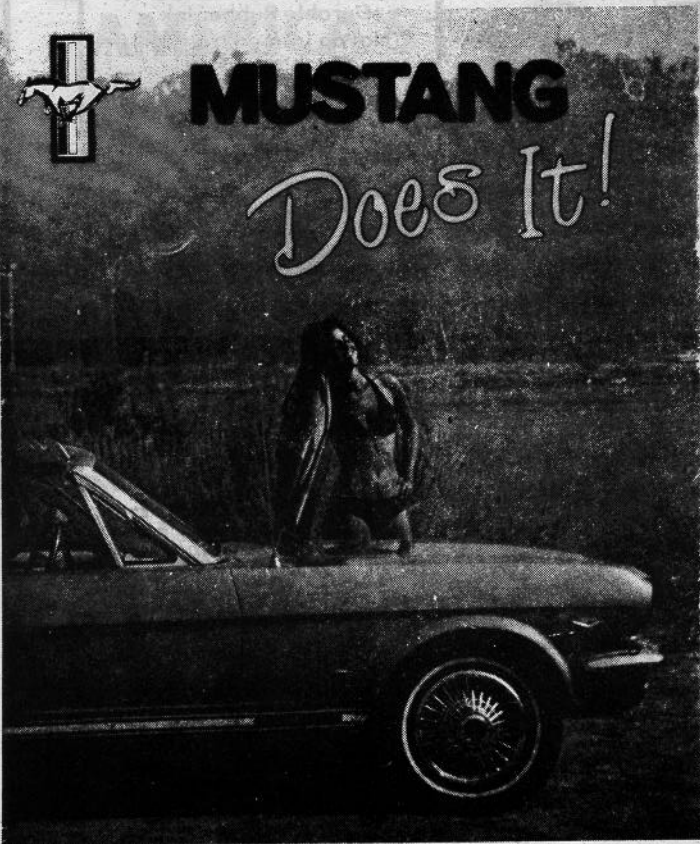


*Ford Parts Warehouse Offers*

# MUSTANG LITERATURE



Mustang Does It! By Ray Miller covers 1964½ - 73 Mustang.  
320 Pages, 1,328 Photographs, Hardbound with  
cover ..... \$27.50

## SHOP MANUALS

1965, 1966, 1967, or 1968 (Specify year) ..... \$25.00

## PARTS MANUALS

Complete set of original Ford loose leaf parts catalogs, 1965 to 1972, weighs 32  
lbs. .... \$60.00

## OWNERS MANUALS

1965, 1966, 1967 ..... \$6.00  
1968 ..... \$8.00  
1965-68 Mustang Parts Catalog ..... \$2.00

Please add 10% shipping. Master Charge and Visa accepted. Regular store hours are 9 - 5, Monday through Friday, but you may call 24 hours a day to place an order. We try to ship within 24 hours.

**FORD PARTS WAREHOUSE**  
Courthouse Square, Liberty, Ky. 42539  
(606) 787-5031

## *Ford Parts Warehouse Offers*

# NEW MUSTANG PARTS

1965 Full Wheel Cover .....	ea. 14.50	1967 Grille .....	49.50
1968 Full Wheel Cover .....	ea. 14.50	1965-66 GT Grille Bars, specify year .....	pr. 150.00
1966 Trim Ring (styled wheel) .....	ea. 20.50	1965 Grille Ornament "Horse and Corral" .....	38.50
1965-66 Spinner with blue center for wire .....	set 98.00	1965 Grille Bars, std. ....	ea. 14.50
1965-66 Blue center wire spinner cover .....	set 325.00	1965-68 fenders, specify year .....	98.00
1965-66 Red center (styled wheel) .....	ea. 11.50	1965-68 Coupe quarter panel, specify year .....	116.50
1967 Full wheel cover .....	ea. 14.50	1965-66 Convertible Quarter Panel .....	116.50
1967-68 Wire wheel cover .....	ea. 60.00	1965-66 Fastback Quarter Panel .....	136.00
1967 Red center for wire wheels .....	ea. 14.50	1965-66 Dash bezel, specify year and type .....	ea. 19.50
1967 Blue center (styled wheel) .....	ea. 7.50	1967 black dash bezel, instrument .....	17.50
1968 Wheel cover, plain center .....	ea. 18.50	1967 brushed aluminum dash bezel .....	29.50
1968 Wheel cover, red center .....	ea. 28.50	1968 black dash bezel .....	29.50
1965-67 Lug nuts (styled wheel) .....	ea. 2.25	1968 Woodgrain dash bezel .....	29.50
1966 Chrome Hi Po air cleaner .....	ea. 22.50	1965 Dash pad black, red, blue .....	98.50
1965-66 GT Exhaust Trumpets .....	pr. 58.50	1966 Dash pad black, burgundy, blue .....	98.50
1965-66 Chrome Trim for GT Trumpets .....	pr. 13.50	1965-66 Armrest pads, specify color .....	11.50
1965-66 GT or Std. rear valance .....	29.50	1965-66 Chrome armrest bases .....	10.00
1965-68 rear bumper, specify year .....	ea. 56.95	1967 Day/Night mirror .....	16.50
1965-68 Front Bumper, specify year .....	ea. 56.95	1968 Day/Night mirror .....	16.50
1965-66 Bumper guards .....	set of 4 - 50.00	1965-68 Fuel Tank .....	62.50
1965-68 Front valance, specify year .....	42.50	1965-66 Trunk Mats, specify year & body .....	24.50
1965-66 Rocker panel midg. ....	ea. 32.50	1965-68 black steering wheel .....	48.50
1967-68 Rocker panel midg. ....	ea. 19.50	1965/66 Horn ring for std. steering wheel .....	26.50
1965-66 Chrome midgs. for vinyl roof .....	pr. 32.50	1965-67 Horn ring for woodgrain wheel .....	17.50
1965 Quarter panel ornament .....	ea. 11.50	1965-66 Parking lamp body .....	13.50
1966 Quarter panel ornament .....	ea. 12.50	1967-68 Parking lamp body .....	14.50
1965-66 Outside door handles .....	pr. 19.00	1965-68 Backup lamp body .....	13.50
1967-68 Outside door handles .....	pr. 22.00	1967-68 backup lamp body .....	13.50
1965-66 Taillamp bezels .....	ea. 9.50	1965-66 Ign. and door lock set w/2 "Pony" keys .....	22.50
1967-68 Taillamp bezels, 6 req'd .....	ea. 8.50	1965 step plates (specify body type) .....	pr. 20.00
1965-66 Taillamp lens .....	ea. 4.75	1965-68 accessory step plates (outer) .....	pr. 32.00
1965-66 Taillamp body .....	ea. 10.00	Pony key blanks door & ignition only .....	ea. 1.50
1965 Grille Mesh, specify std. or GT .....	36.50	Pony key blank trunk .....	1.50
1966 Grille .....	49.50		

### 1965-68 Mustang Parts Catalog \$2.00

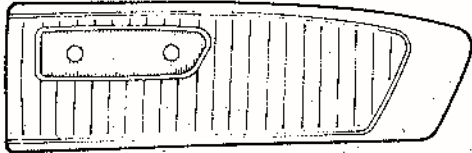
Please add 10% for shipping and handling (minimum - \$2.00) except fenders, hoods and quarter panels, which will be shipped, freight collect. Master Charge and Visa are accepted. Regular store hours are 9 to 5, Monday through Friday, but you may call 24 hours a day to place an order. We try to ship within 24 hours.

**FORD PARTS WAREHOUSE**  
 Courthouse Square, Liberty, Ky. 42539  
 (606) 787-5031

*Ford Parts Warehouse Offers*

**AUTHENTIC MUSTANG INTERIORS**

**DOOR PANELS**  
1965 - 1966 - 1967



All Original colors  
\$52.00 each

**MOLDED CARPET**

Our molded carpets are made by the same suppliers Ford used. All carpets are molded, serge bound, and jute backed as original. The correct heel pad and toe guard are color keyed.  
1964½ - 68 (Specify color and body style) ..... \$95.00

**DASH PADS**

1965 Dash Pads - black, blue, red ..... \$98.50  
1966 Dash Pads - black, blue, burgundy ..... \$98.50

**TRUNK MATS**

Genuine Ford trunk Mats - Specify year and body type ..... \$24.50

**ARMREST PADS**

1965 - 66 (Specify color) ..... es. \$11.50  
Chrome bases for pads ..... ea. 10.00

**STEP PLATES**

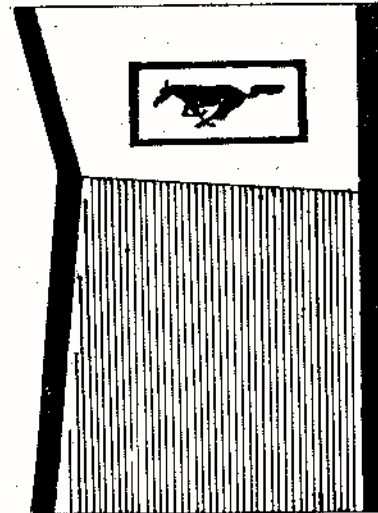
1965 - 68 (Specify Body Type) ..... Pr. \$20.00

**ACCESSORY PONY MATS**

AVAILABLE IN:

- WHITE
- BLUE
- RED
- BURGANDY
- BLACK
- GREEN

Set of 4 ..... \$45.00  
Front Only ..... \$30.00



1965 - 68 Mustang Parts Catalog ..... \$2.00

Please add 10% for shipping. Master Charge and Visa accepted. Regular store hours are 9 - 5, Monday through Friday but you may call 24 hours a day to place an order. We try to ship within 24 hours.

**FORD PARTS WAREHOUSE**  
Courthouse Square, Liberty, Ky. 42539  
(606) 787-5031