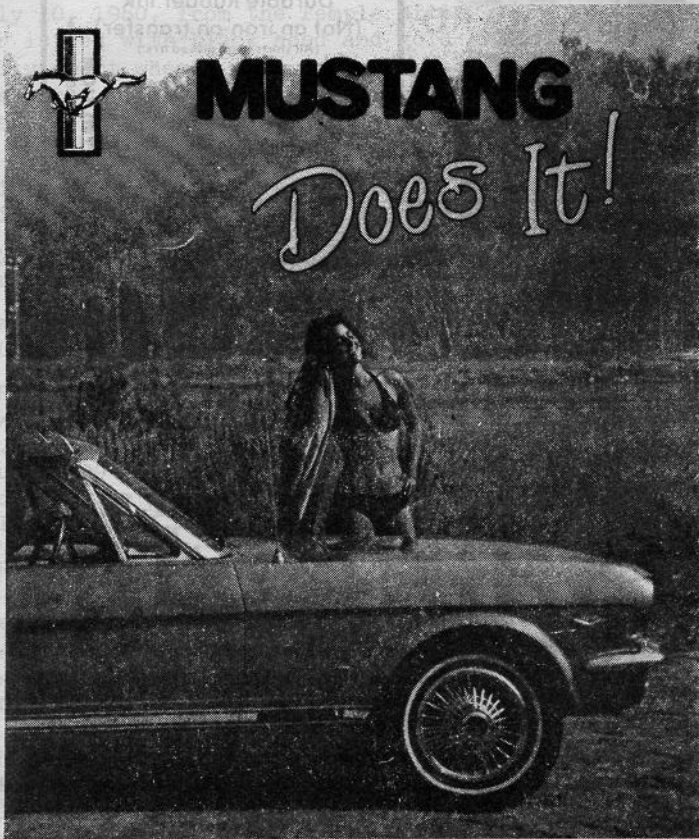


Ford Parts Warehouse Offers
MUSTANG LITERATURE



Mustang Does It! By Ray Miller covers 1964½ - 73 Mustang,
 320 Pages, 1,328 Photographs, Hardbound with
 cover \$22.50

SHOP MANUALS

1965, 1966, 1967, or 1968 (Specify year) \$20.00

PARTS MANUALS

Complete set of original Ford loose leaf parts catalogs, 1965 to 1972, weighs 32
 lbs. \$60.00

OWNERS MANUALS

1965, 1966, 1967 \$6.00
 1968 \$8.00
 1965-68 Mustang Parts Catalog \$2.00

Please add 10% shipping. Master Charge and Visa accepted. Regular store hours are 9 - 5, Monday through Friday, but you may call 24 hours a day to place an order. We try to ship within 24 hours.

FORD PARTS WAREHOUSE
 Courthouse Square, Liberty, Ky. 42539
 (606) 787-5031

Ford Parts Warehouse Offers

NEW MUSTANG PARTS

1965 Full Wheel Cover	ea. 14.50	1967 Grille	49.50
1968 Full Wheel Cover	ea. 14.50	1965-66 GT Grille Bars, specify year	pr. 150.00
1966 Trim Ring (styled wheel)	ea. 20.50	1965 Grille Ornament "Horse and Corral"	38.50
1965-66 Spinner with blue center for wire	set 98.00	1965 Grille Bars, std.	ea. 14.50
1965-66 Blue center wire spinner cover	set 325.00	1965-68 fenders, specify year	98.00
1965-66 Red center (styled wheel)	ea. 11.50	1965-68 Coupe quarter panel, specify year	116.50
1967 Full wheel cover	ea. 14.50	1965-66 Convertible Quarter Panel	116.50
1967-68 Wire wheel cover	ea. 60.00	1965-66 Fastback Quarter Panel	136.00
1967 Red center for wire wheels	ea. 14.50	1965-66 Dash bezel, specify year and type	ea. 19.50
1967 Blue center (styled wheel)	ea. 7.50	1967 black dash bezel, instrument	17.50
1968 Wheel cover, plain center	ea. 18.50	1967 brushed aluminum dash bezel	29.50
1968 Wheel cover, red center	ea. 28.50	1968 black dash bezel	29.50
1965-67 Lug nuts (styled wheel)	ea. 2.25	1968 Woodgrain dash bezel	29.50
1966 Chrome Hi Po air cleaner	ea. 22.50	1965 Dash pad black, red, blue	98.50
1965-66 GT Exhaust Trumpets	pr. 58.50	1966 Dash pad black, burgundy, blue	98.50
1965-66 Chrome Trim for GT Trumpets	pr. 13.50	1965-66 Armrest pads, specify color	11.50
1965-66 GT or Std. rear valance	29.50	1965-66 Chrome armrest bases	10.00
1965-68 rear bumper, specify year	ea. 56.95	1967 Day/Night mirror	16.50
1965-68 Front Bumper, specify year	ea. 56.95	1968 Day/Night mirror	16.50
1965-66 Bumper guards	set of 4 - 50.00	1965-68 Fuel Tank	62.50
1965-68 Front valance, specify year	42.50	1965-66 Trunk Mats, specify year & body	24.50
1965-66 Rocker panel mldg.	ea. 32.50	1965-68 black steering wheel	48.50
1967-68 Rocker panel mldg.	ea. 19.50	1965/66 Horn ring for std. steering wheel	26.50
1965-66 Chrome mldgs. for vinyl roof	pr. 32.50	1965-67 Horn ring for woodgrain wheel	17.50
1965 Quarter panel ornament	ea. 11.50	1965-66 Parking lamp body	13.50
1966 Quarter panel ornament	ea. 12.50	1967-68 Parking lamp body	14.50
1965-66 Outside door handles	pr. 19.00	1965-68 Backup lamp body	13.50
1967-68 Outside door handles	pr. 22.00	1967-68 backup lamp body	13.50
1965-66 Taillamp bezels	ea. 9.50	1965-66 Ign. and door lock set w/2 "Pony" keys	22.50
1967-68 Taillamp bezels, 6 req'd	ea. 8.50	1965 step plates (specify body type)	pr. 20.00
1965-66 Taillamp lens	ea. 4.75	1965-68 accessory step plates (outer)	pr. 32.00
1965-66 Taillamp body	ea. 10.00	Pony key blanks door & ignition only	ea. 1.50
1965 Grille Mesh, specify std. or GT	36.50	Pony key blank trunk	1.50
1966 Grille	49.50		

1965-68 Mustang Parts Catalog \$2.00

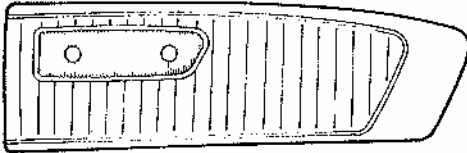
Please add 10% for shipping and handling (minimum - \$2.00) except fenders, hoods and quarter panels, which will be shipped, freight collect. Master Charge and Visa are accepted. Regular store hours are 9 to 5, Monday through Friday, but you may call 24 hours a day to place an order. We try to ship within 24 hours.

FORD PARTS WAREHOUSE
Courthouse Square, Liberty, Ky. 42539
(606) 787-5031

Ford Parts Warehouse Offers

AUTHENTIC MUSTANG INTERIORS

DOOR PANELS 1965 - 1966 - 1967



All Original colors
\$52.00 each

MOLDED CARPET

Our molded carpets are made by the same suppliers Ford used. All carpets are molded, serge bound, and jute backed as original. The correct heel pad and toe guard are color keyed.
1964½ - 68 (Specify color and body style)..... \$95.00

DASH PADS

1965 Dash Pads - black, blue, red \$98.50
1966 Dash Pads - black, blue, burgundy \$98.50

TRUNK MATS

Genuine Ford trunk Mats - Specify year and body type..... \$24.50

ARMREST PADS

1965 - 66 (Specify color) es. \$11.50
Chrome bases for pads ea. 10.00

STEP PLATES

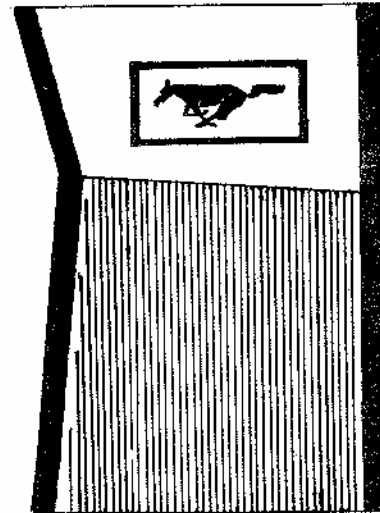
1965 - 68 (Specify Body Type) Pr. \$20.00

ACCESSORY PONY MATS

AVAILABLE IN:

WHITE
BLUE
RED
BURGANDY
BLACK
GREEN

Set of 4 \$45.00
Front Only \$30.00



1965 - 68 Mustang Parts Catalog \$2.00

Please add 10% for shipping. Master Charge and Visa accepted. Regular store hours are 9-5, Monday through Friday but you may call 24 hours a day to place an order. We try to ship within 24 hours.

FORD PARTS WAREHOUSE
Courthouse Square, Liberty, Ky. 42539
(606) 787-5031