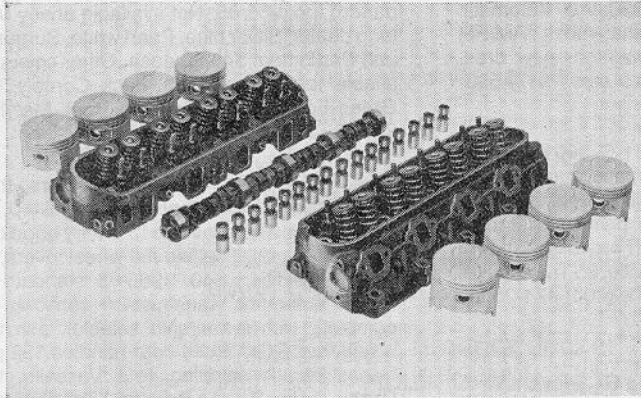
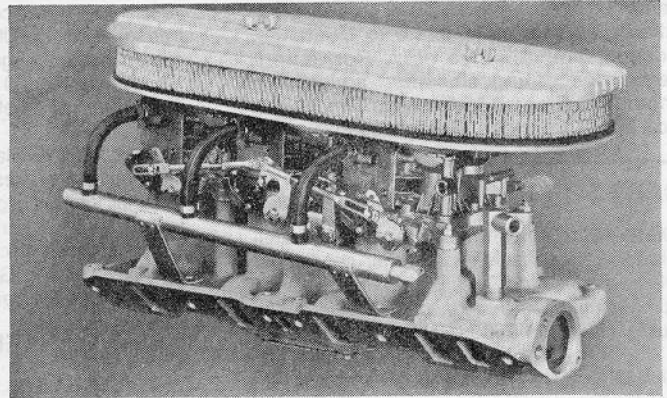


Cobra kits from your Ford Dealer!

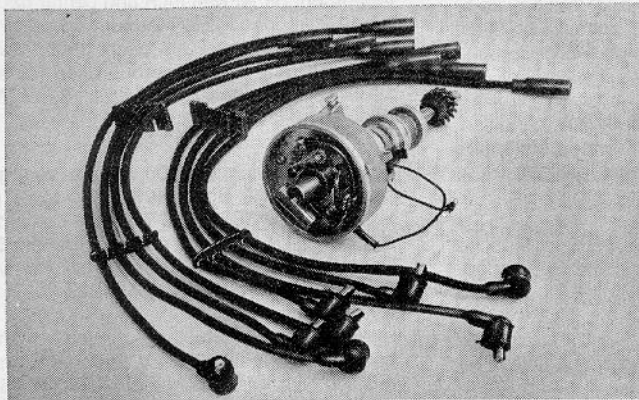
17 high-performance and dress-up kits now offered for Ford 221, 260 and 289 V-8 engines



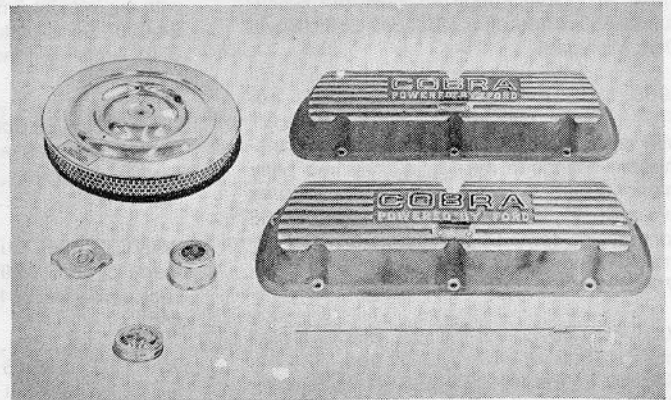
ENGINE PERFORMANCE KIT. Here's a three-way package of power. Has eight matched pistons with heads designed for valve clearance; high-lift design camshaft with tappets; cylinder head and valve assembly with heavy-duty rocker arm studs, spring seat ridges, solid valve spring retainers and oil-controlling valve stem seals. Part #C40Z-6A044-A(221 CID), #C40Z-6A044-B(260), #C40Z-6A044-C(289) Each \$342.70*



THREE 2-V INDUCTION KIT. Combine this 6-barrel baby with the distributor, cam, and cylinder head kits and watch the horses soar! Kit has three 2-V carburetors on a cast aluminum intake manifold with special air cleaner. Mechanical linkage lets you "go on one" for economy, cut in the other two for high speeds and maximum acceleration. Part #C40Z-6B068-A(260 CID), C40Z-6B068-B(289) Each \$210.00*



DISTRIBUTOR KIT. Consists of distributor and heavy-duty spark plug leads. Features dual-point mechanical spark advance control. Offers high-speed performance characteristics especially suited for drag strip operation and other high RPM requirements. Part #C4DZ-12050 \$49.80*



ENGINE DRESS-UP KITS. Includes aluminum valve covers; long-lasting chrome dip stick, radiator cap, master cylinder cap, oil filler cap, air cleaner cover and filter. 1963 kit fits 221, 260, 289 blocks; '64 kit fits 260 and 289 engines. Part #C302-6980-A('63)—\$76.95*, #C40Z-6980-A('64)—\$82.85*

COBRA KIT BOOKLET

Write today for this 12-page booklet with performance tips from Ak Miller and a complete listing of all 17 Cobra Kits for Ford 221, 260 and 289 V-8's, including specifications, prices and parts numbers. Send 25¢ to cover postage and handling to:

AK MILLER PERFORMANCE BOOK
P. O. BOX 1000
DEARBORN, MICHIGAN

*Manufacturer's suggested retail price. Installation charges and state or local taxes, if any, are extra.

HIGH PERFORMANCE



PRODUCTS OF  MOTOR COMPANY