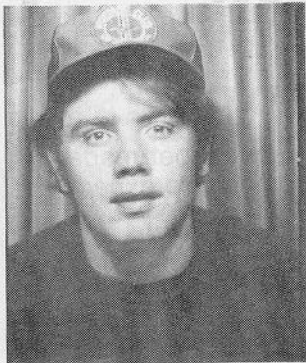


*first in a series:*

# Deciphering Warranty Plates

In response to the many inquiries we receive each month concerning warranty plates, we begin here a series of articles designed to enlighten those who would like to learn how to decipher the mysteries of Mustang warranty plates.

*By Jon Whittington  
Urbana, Illinois*



The 1964½ through 1973 Ford Mustang used two types of warranty plates. For the years 1964½ - 1969, Ford used a reverse-stamped metal warranty plate that was riveted to the rear face of the driver's door. This plate included a bodystyle code, color code, trim code, date of manufacture, DSO code, rear axle code, transmission code, and vehicle identification number, (VIN).

The 1970 - 1973 Mustangs used a reverse printed, opaque, clear, vehicle certification label. This label was also attached to the rear of the driver's door by an adhesive compound. If the label were removed or tampered with, the word VOID would appear across the face. This plate included a VIN-vehicle identification number, body code, color code, trim code, rear axle code, transmission code, and DSO-district that ordered the car-code.

The 1965 - 1967 Shelby Mustangs did not receive a warranty plate. They had a serial number tag affixed over the Ford VIN on the inner of the driver's side fender. The 1968 Shelby Mustang received a warranty plate like all 1968 Mustangs, but it had "Special Performance Vehicle" stamped into it. It also included the serial number tag affixed to the inner fender.

The 1969 Shelby Mustangs used the regular Mustang warranty plate, deleted the serial number tag and pop-riveted a "Shelby Automotive" plate beneath the standard warranty plate.

In this, the first in a series of articles on Mustang identification, I would like to cover the Ford VIN breakdown, Assembly Plant codes, and Body Serial code by Body Type. In the following months I will cover engine codes, bodystyle codes, transmission codes, rear axle codes, date codes, interior trim codes, DSO codes, and exterior paint codes. If you have any questions, please feel free to write (Please include a SASE) Jon Whittington, 106 South Urbana, Urbana, Illinois 61801.

**Coming Next Month!**  
**1964½-1973 MUSTANG ENGINE CODES**  
*(Including Boss and Shelby)*

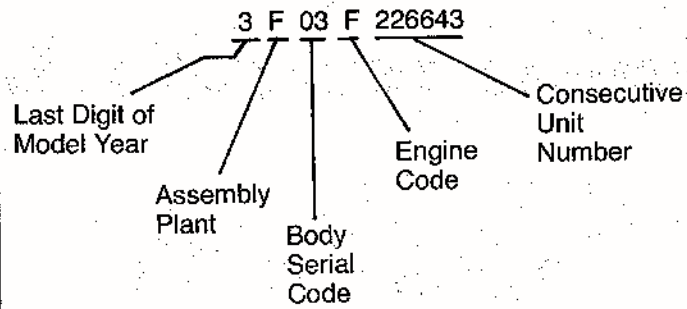
## ASSEMBLY PLANT CODES (Mustang and Shelby)

F Dearborn, Michigan  
T Metuchen, New Jersey  
R San Jose, California

## BODY SERIAL CODE

CODE	1964½-1966	1967-1969	1970-1973
01		Hardtop	Hardtop
02		Fastback	Sportsroof
03		Convertible	Convertible
04			Grande
05			Mach 1
07	Hardtop		
08	Convertible		
09	Fastback		

**FORD VIN (Vehicle Identification Number)  
BREAKDOWN 3F03F226643**



BODY COLOR TRIM DATE DSO AXLE TRANS

76C A 66 06M 34 H 5

VEHICLE WARRANTY NUMBER  
5F08K100001

**Ford**

Not For Title or  
Registration Purposes

This vehicle is manufactured under U.S.  
and foreign patents and patent applications.

A Product of Ford Motor Co.

Made in U.S.A.

**1964 1/2—1969 Warranty Plate**

MANUFACTURED BY  
FORD MOTOR COMPANY

100100

04/73 THIS VEHICLE CONFORMS  
TO ALL APPLICABLE FEDERAL  
MOTOR VEHICLE SAFETY STANDARDS  
IN EFFECT ON DATE OF  
MANUFACTURER SHOWN ABOVE

VEH. I.D. NO.		BODY	COLOR
3F03F226643		76D	3D
TRIM	TRANS	AXLE	DSO
CW	W	6	46

Not For Title or Registration

MADE IN U.S.A.

**1970-1973 Certification Label**