

## Helpful Hint #1

# How to Replace Door Hinge Springs

A common problem with 1965-1967 Mustangs is a missing or broken spring on the lower door hinge. When we first discovered a spring missing, we decided to replace the hinge; however, we located very few old hinges that were complete. Our next step was to go to the local Ford dealer for repair tips. Their response: replace it with a new one. The cost of this was more than we wanted to invest. I then asked Arnold Marxmiller, autobody repair instructor at Vermilion Occupational Technical Education Center where I also am employed, about the hinge-spring problem. His response was either replace it or compress a spring in a vise and wire it as shown in photo "A". We still had trouble unless we took the hinge out of the car, and that method necessitated realigning the door after reinstalling the repaired hinge.

Finally, the following method was developed by my father-in-law, Tony Mazur of Momence, Ill.

**Step 1:** (Photo B) Open the door as far as possible and place a 2 x 2 or a 2 x 4 under the door, horizontal across the door bottom, held in place by a jack. Take special care not to raise the door, just jack the 2 x 2 up until it applies minimal pressure on the door. NO LIFT.

**Step 2:** (Photo C) Make a couple of "line up marks" at the top and side of the hinge, on the door half. Then remove the bolts that fasten the hinge — ONLY to the door.

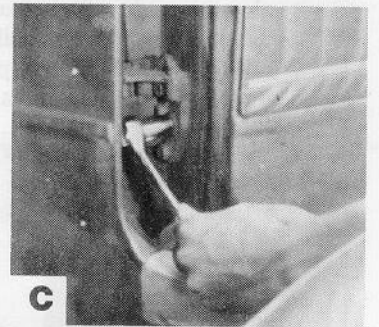
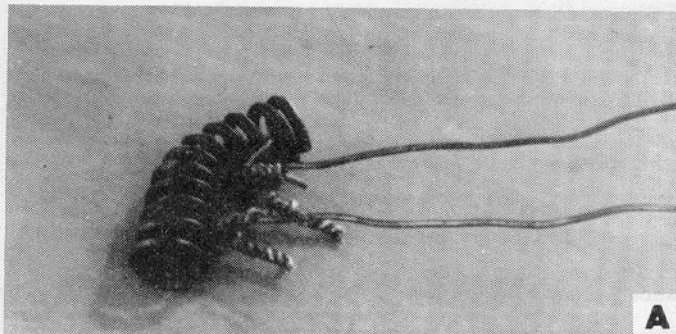
**Step 3:** With the hinge fastened to the frame and not the door, place the hinge in the position it would be if the door was closed. This allows the hinge to receive the compressed spring. Now place spring into correct location. (Note Photo "D" shows this with the exception that I removed the hinge from the car for better detail in the photo).

**Step 4:** (Photo E) Now that the spring is in place in the hinge attached to frame, use wire cutters and clip the wires holding the spring in a compressed position. Spring should now be in proper location and ready for reconnection to the door. Carefully remove the cut wires from the spring coils.

**Step 5:** Open the hinge until it is against the door, and place the bolts back into hinge and door. Tighten them securely.

**Step 6:** Remove jack and 2 x 2.

**Step 7:** Open and close door to check alignment. It should be aligned as well as before the repairs if all was done carefully. There should be no additional work other than putting your tools away and then — enjoy your Mustang.



by  
*Paul Wasser*

