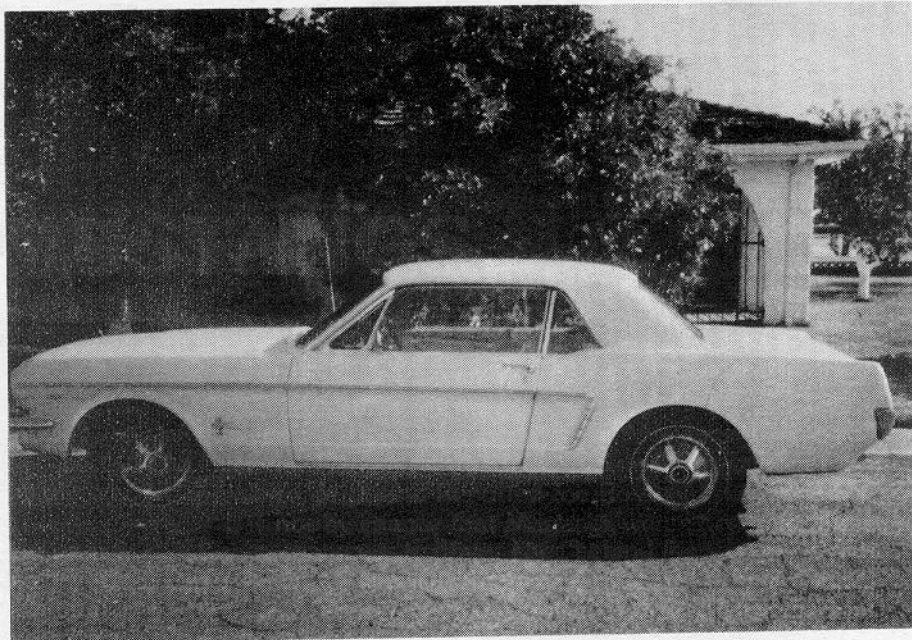


HORSE SHOW



A lovely lady from Phoenix, Yvonne Forrest, sends pictures of her equally lovely 1965 hardtop, along with this interesting story.

Back in 1965, she was driving a pale blue Cadillac, when her husband, Hugh, happened upon a pale blue Mustang which he thought she would like, because it "matched" her Cadillac.

The Mustang has everything — power steering and brakes, air conditioning, tinted glass, special console, rocker panel mouldings, cruise-o-matic, two-speed wiper and washer, wood steering wheel, two tone blue and white upholstery, base 289 2V 8 cylinder engine. The VID reveals a July, 1965 production date, 65B body, F color, 62 trim, 75 DSO, 6 axle, 6 trans. Warranty Number is 5R07C248751; registration, August 25, 1965.

Mrs. Forrest says she has spent a good deal of money keeping her Mustang in showroom-perfect condition. Only she drives this prize, and she has taken it out of state only once, to Las Vegas. She is English and spends each July and August in Europe; note the "badges" Mrs. Forrest brings her Mustang each year. During this time, her Mustang resides in a covered garage, leaving only to be overhauled by her dealer. She says she would hesitate to park it anywhere at night, because hardly a day goes by that she does not receive an offer for it. Recently, she turned down an offer of \$8,000.

Mention of Mrs. Forrest's Cadillac dropped out in the second sentence of her letter; obviously, this GM product took a quick and lasting backseat to her li'l ole pony car.

HORSE SHOW

Seventeen-year-old John Meininger and his father of Jerome, Michigan are both proud owners of 1965 Mustangs. The coupe belongs to John, who sent us the pictures. It is equipped with a 289-4V, automatic transmission console, Rally Pac, spoke wheel covers, remote mirror and vinyl top. Vehicle Identification Numbers are 5F07A 285014 and 65A 3 D6 11J 33 1 6. Not to be outdone, Dad's convertible boasts a 289-2V, automatic transmission, power steering, power top, remote mirror and spoke wheel covers. Vehicle Identification Numbers are 6F08C 745434 and 76A A 26 01T 33 6 6. (Jim Smart, are you listening?)

