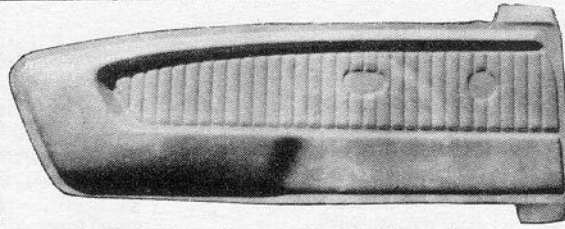


NEW PRODUCTS

More new products from Mr. G's include pony door panels for 1965-66 Mustangs. The panels are available in off-white, which Glenn Garrison says is the closest to the original color he has seen, and in black. Also from Mr. G's is the shift slide seal for the 1965-66 Mustang with console. Both of these items from Mr. G's will be acceptable for use on cars shown by our members in all nationally sponsored shows.

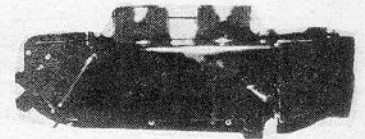
From Vintage Motors comes the long awaited repro style steel wheels for the 1965 and 1966 model Mustangs. These wheels look identical to the original. Robert Ash of Vintage Motors says that 8 months of research and development went into the project. To insure performance and safety, the wheels have passed stringent testing and have a 1400 pound per wheel rating. You will be glad to hear also that the wheels are warranted for one year for workmanship and materials. A welcome accessory to go with these wheels is a repro lug nut that looks exactly like



and should be cheaper in price than the ones from Ford. Both the wheels and the lugs are acceptable replacement parts for your show car. For more information, contact Vintage Motors, P.O. Box 2224, Des Moines, Iowa 50310, or call (515) 274-4540.

Pony Enterprises has available a set of squeeze type breather hose clamps for the early models that will put the finishing touch on your engine compartment. This item is also an approved replacement part.

From Tom Horne Reproductions comes a whole bunch of repro goodies for the Mustang. First off, a fire wall to hood seal with attaching parts for 1967-68 Mustangs. Next we have 1965-66 original style sun visor rubber



HEATER AIR (PLENUM) CHAMBER

tips, 1965-66 deck lid rubber bumpers, 1967-68 front bumper guard rubber pads, 1967-68 rear bumper guard rubber pads, 1965-68 round base antenna pad, 1965-68 accessory headlight dimmer switch rubber cap, 1967-68 windshield washer foot control rubber pad, 1965-68 automatic shift dial seal, 1965-66 turn signal lever and 1965-66 radiator type hood bumpers. All of these items are of good quality and are accepted by MCA.

And from Glazier's Mustang Barn comes a repro heater plenum for 1965-68 Mustangs and 1969's without air conditioning. Fred Glazier says his product far exceeds Ford's replacement part, both in quality and in fit. Again, this will be an acceptable replacement part for your use.

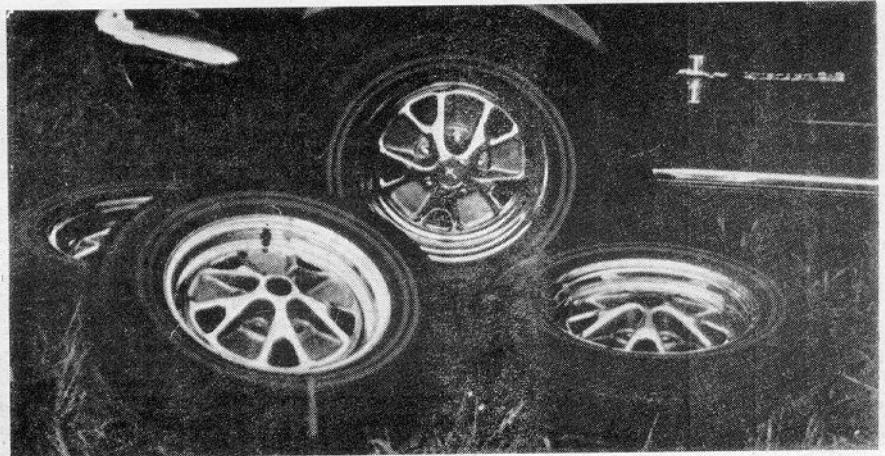
Tom Horne
REPRODUCTIONS

NEW MUSTANG REPRODUCTION PARTS

- 1967-68 Rear bumper guard rubber pads each \$5.95
- 1967-68 Front bumper guard rubber pads each \$6.25
- 1965-68 Original style rubber sun visor tips pair \$1.95
- 1965-66 Door to window rubber seal pair \$10.95
- 1965-66 Quarter pillar to window rubber seal pair \$10.95
- 1965-68 Floor dimmer switch accessory rubber trim cap each .75
- 1965-66 Trunk or rear deck lid rubber bumpers each .95
- 1965-68 Round base antenna rubber pad, EXACT REPRODUCTION (not Ford replacement type) each \$1.00
- 1965-66 Turn signal switch lever each \$8.95
- 1965-66 Metal brake pedal trim (automatic transmission) each \$4.00
- 1965-66 Inside mirror bracket, available June 30, 1982 each \$15.95
- 1965-66 Interior day/night rear view mirror available August 1, 1982 each \$29.95
- 1965-66 Firewall - hood seal each \$7.95
- 1967-68 Firewall - hood seal each \$8.95
- Foot windshield washer rubber pad each \$1.75

Please Add 10% Shipping • Call Or Write For Free Catalog

23032 HATTERAS STREET
WOODLAND HILLS, CA 91367
(213) 348-0332



NEW!!! **FREE**

MUSTANG PARTS CATALOG

CALL TOLL FREE *Mustang*
800-227-2174 *Headquarters*

Calif. Toll Free 800-642-2405

2565 Cloverdale Avenue
Concord, California 94518