

## The 1983 Cover Cars One More Time

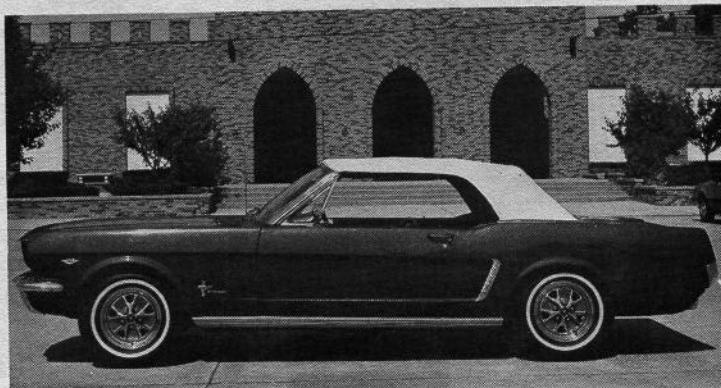
### JANUARY

George & Leona Stevens'  
1964½ convertible



### FEBRUARY

Fred Morelli's  
1965 convertible



### MARCH

Ken Yeager's  
1967 Shelby GT 500 fastback



### APRIL

Bob Feld's  
1967 convertible



### MAY

Gary Childress'  
1969 Shelby GT 500 convertible



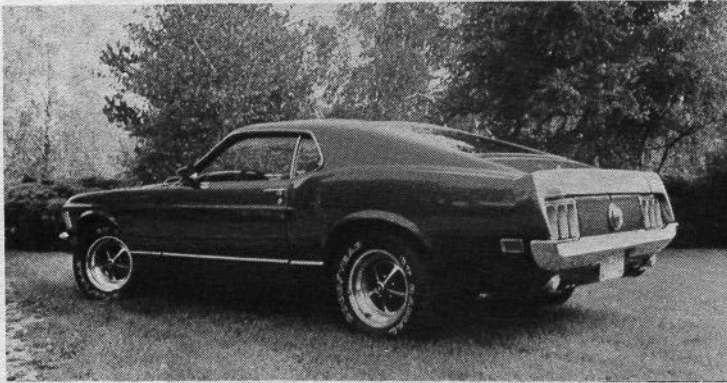
### JUNE

Rick Mitchell's  
1966 Sprint coupe



**JULY**

Dave Moyer's  
1970 Mach I



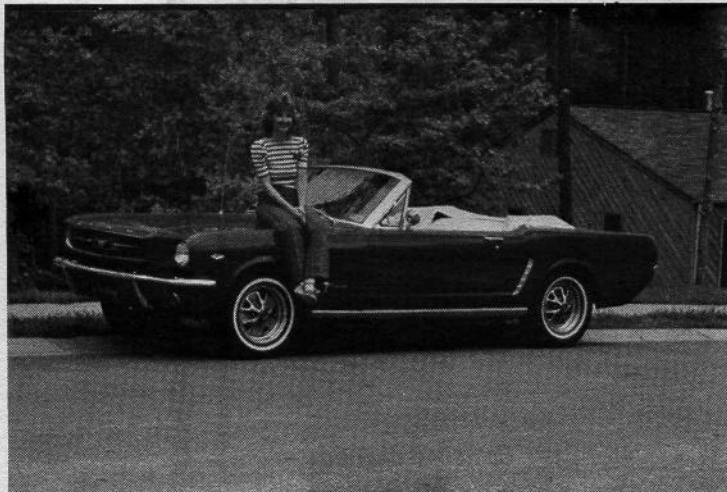
**AUGUST**

Lee Wilmot & Bill Maney's  
1965 Shelby R Model



**SEPTEMBER**

Diane Pfeifer's  
1965 convertible



**OCTOBER**

John Murphy's  
1965 convertible



**NOVEMBER**

Sue Osborn's  
1970 Shelby GT 500 fastback



**DECEMBER**

Dennis Bresenhan's  
1968 GT fastback

