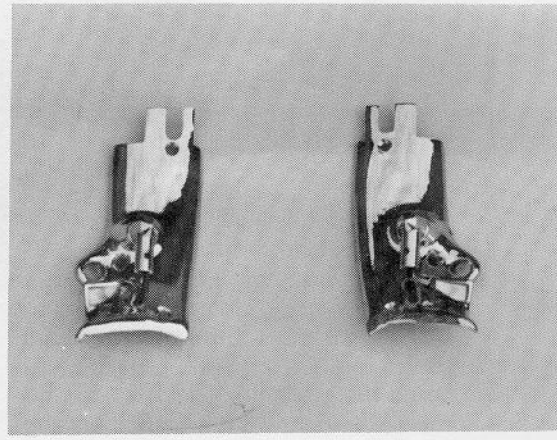
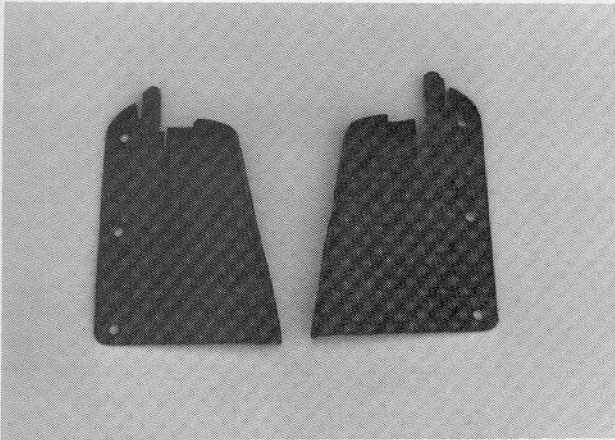
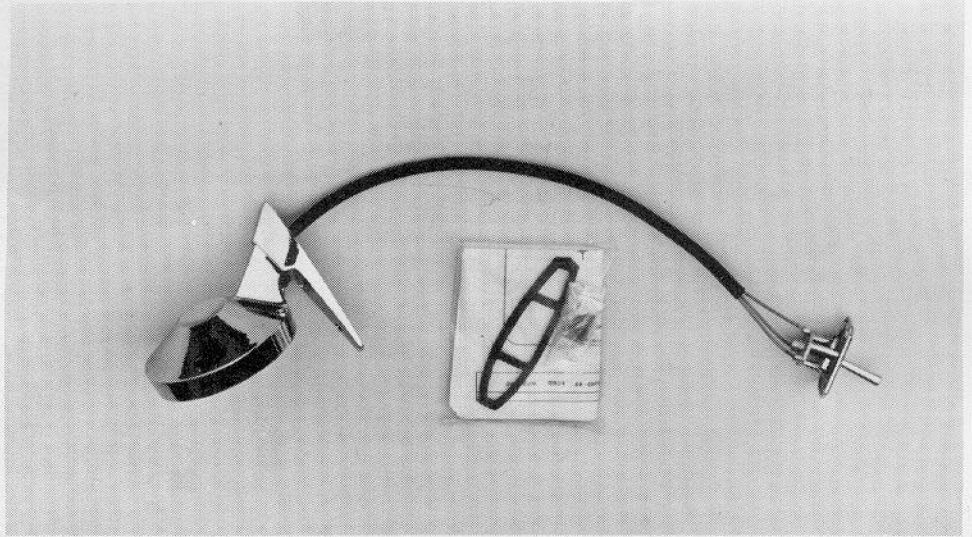
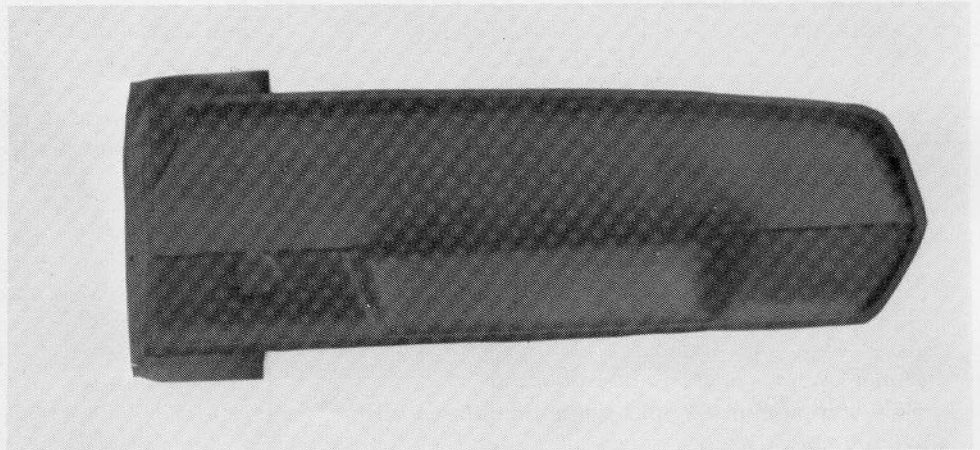


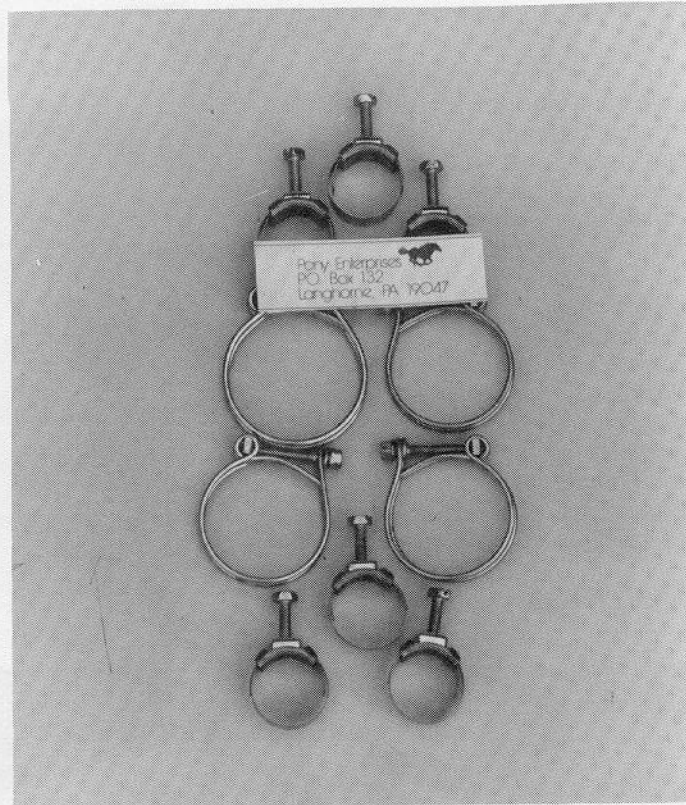
New from Tom Horne Reproductions is a reproduction driver side remote control rearview mirror that is of outstanding quality and sells for only \$79.95. Also from Tom Horne is a set of convertible sun visor brackets and pivots that retail for \$89.95 a pair. Both of these items are new reproductions, not rechromed originals which means there is no exchange necessary for your old set. More from Tom Horne is the backup light body rubber seals, left hand and right hand, for \$7.50 a pair. And last, but not least, is the early 1967 door window rubber seals for \$10.95 a pair. All these items are of outstanding quality and will be accepted for judging.



New from Mr. G's is the 1967 deluxe molded door panel skins selling for \$119.95 a pair. Also available is the plug that goes in the 1967 door panel selling for \$3.00 each. The 1969 and 1970 door cup inserts are now available. The 1969 inserts sell for \$4.75 each and the 1970 inserts are \$3.50 each. These items are of the same fine quality as all Mr. G's reproductions and are accepted for national judging by MCA.



Now available from Pony Enterprises is a late model hose clamp kit for the 1971 thru 1973 Mustangs which sells for \$17.00. This is a welcome item for all our late model owners. Also available is a small clamp for the 1965 Mustang used on the transmission line at the radiator. This clamp comes in a set of four and sells for \$5.00. These items will be accepted for national judging by MCA.



Paddock Patch Panels

Here are three new reproductions from the leader in steel patch panels. The first is their new "MOST ORIGINAL" Mustang Frame Rail which fits 64½-70 Mustangs. Features include: Hold Down Bolt Holes, Step Joint to facilitate installation, rails have natural curves (no hard angles). Truly the best frame rail available, it sells for \$51.00 each. The second is the 65-66 Mustang Front Suspension Bumper Bracket, more commonly known as the "Outer Shock Tower." This part is die stamped from heavy 16 gauge steel with 14 gauge inner support welded in place. A faithful repro, it sells for \$49.00 each. The third is the 65-66 Mustang Headlamp Inner Panel Bracket. It is die stamped from 19 gauge steel and made just like the original. Price for this part is \$14.95 each. These parts are available from two locations. The Paddock, Inc., 38 W. Warrick St., P.O. Box 30, Knightstown, IN 46148, 1-800-428-4319; in state (317) 345-2131. Paddock West, 446 Tennessee St., Redlands, CA 92373, 1-800-854-8532; in state (714) 798-4166.

