

THE FORD PARTS WAREHOUSE

PARTS & ACCESSORIES

1965 Full wheel cover, 13" or 14"	ea. \$ 20.00
1966 Full wheel cover	ea. 22.50
Spinner & blue center for 1965-66 wire wheel cover	ea. 24.50
1966 Trim ring for styled steel wheels	24.50
1965-66 Red center for styled steel wheels	17.00
1965-67 Lug nuts for styled steel wheels	ea. 3.00
1967 Trim ring for styled steel wheels	24.50
1967 Blue center for styled steel wheels	10.00
1967 Full wheel cover	20.00
1968 Full wheel cover (plain center)	26.00
1968 Full wheel cover (red center)	42.00
1968 Trim ring for styled steel wheels	24.50
1966 Chrome Hi-Po air cleaner	22.50
1965-66 GT exhaust trumpets	pr. 125.00
1965-66 Chrome trim for GT trumpets	ea. 14.00
1965-68 GT or std. rear valance, specify yr.	49.50
1965-66 Front bumper	120.00
1965-66 Rear bumper	120.00
1967-68 Front bumper	110.00
1967-68 Rear bumper	110.00
1965-68 Bumper guards (set of 4)	73.00
1965-68 Front valance, specify year	61.75
1965-66 Rocker panel molding	ea. 54.00
1967-68 Rocker panel molding	ea. 30.00
1965 Quarter panel ornament	16.75
1966 Quarter panel ornament	18.50
1965-66 Outside door handles	ea. 16.65
1967-68 Outside door handles	ea. 18.75
1965-66 Tail lamp bezels	ea. 14.75
1967-68 Tail lamp bezels	ea. 11.0
1965 Grille mesh, specify std. or GT	54.75
1966 Grille	80.50
1967 Grille	67.00
1965-67 GT grille bars, specify year	pr. 135.00
1965-67 Fog light assemblies	ea. 61.60
1965 Grille ornament "Horse and Corral"	58.00
1965 Grille bars, std.	ea. 22.00
1965-66 Fenders, specify year, side	ea. 175.00
1965-68 Coupe quarter panels, specify yr.	190.00
1965-66 Convertible quarter panel	190.00
1965-66 Fastback quarter panel	475.00
1965-66 Dash bezel, specify yr. & type	31.25
1967 Dash bezel, black	26.45
1967 Dash bezel, brushed alum.	46.95
1968 Dash bezel, black	46.95
1968 Dash bezel, woodgrain	46.95
1965 Dash pads (black, red, blue)	120.00
1966 Dash pads (black, burgundy, blue)	120.00
1965-66 Armrest pads, specify yr., color	ea. 18.00
1965-66 Chrome armrest bases	ea. 14.00
1967-68 Armrest pads, specify yr., color	ea. 25.00
1965-68 Fuel tank	90.00
1965-66 Trunk mats, specify year, body type	41.50
1965-66 Steering wheel, black	78.00
1965-66 Horn ring for std. wheel	56.00
1965-67 Horn ring for woodgrain wheel	25.00
1965-66 Parking lamp assembly	30.00
1967-68 Parking lamp assembly	30.00
1965-66 Back-up lamp assy, specify year	37.50
1965-66 Ign door lock set w/2 pony keys	28.50
1965-68 Step plates (specify body type)	pr. 28.00
1965-68 Accessory step plates (outer)	pr. 46.00
Cobra alum. valve covers, 260-302	pr. 75.00
Cobra alum. valve covers, 351-428	pr. 110.00
1965-66 Hood	225.00
1967-68 Hood (specify year)	215.00
1965-66 Radiator (specify engine)	175.00
1965-68 Luggage rack (except fastback)	130.00
1967 Antenna kit	60.00
1965-66 Door edge guard kits	25.00
1967-68 Parking lamp assy.	27.60

REPAIR PANELS

1965-66 Lower rear corner patch panel	25.00
7 1/2" height	
1965-70 Lower rear corner patch panel,	
12" height, specify year	33.00
1965-70 Rear wheel flair, specify year	33.00
1965-70 Rear frame rail	51.00
1965-66 Lower rear corner of front fender	25.00
1967-68 Lower rear corner of front fender	26.00
1965-70 Inner panel, lower rear qtr.	21.00
1965-68 Short frt. floor pan	per side 44.00
1965-68 Long frt. floor pan	per side 49.00
1965-68 Rear floor	per side 49.00
1965-70 Inner rear wheel Hsg.	50.00
1965-68 Outer wheel Hsg. specify year	59.00
1965-68 Conv. inner rocker panels	65.00
1965-68 Conv. torque boxes	66.00

UPHOLSTERY 1965-68 (Specify Year and Color)

Complete set std. interior	185.00
Front buckets only	pr. 132.00
Complete set with bench front	225.00
Complete set 65-66 "Pony" interior	270.00
Front buckets only	190.00
Door panels std. interior	52.00
"Pony" door skins	135.00

MOLDED CARPET

All carpets molded and trimmed to fit your car just like the original. No cutting or fitting required.
Coupes, convertibles, fastbacks, without fold down area 95.00
Fastbacks with fold down area 115.00

ACCESSORY PONY MATS

Complete, set of four	45.00
Fronts only	30.00

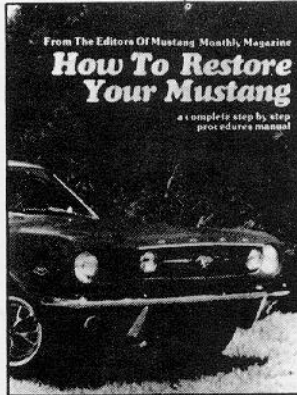
SHOP MANUALS, LITERATURE, PARTS CATALOGS

'65-'68, '70-'73 Shop manuals	25.00
'65-'73 Owners manuals	6.00
Mustang Does It	27.50
'65-'72 Genuine Ford parts catalogs, loose leaf, gives illustrations and part numbers	60.00
1965-70 Factory Facts books, specify year	4.95



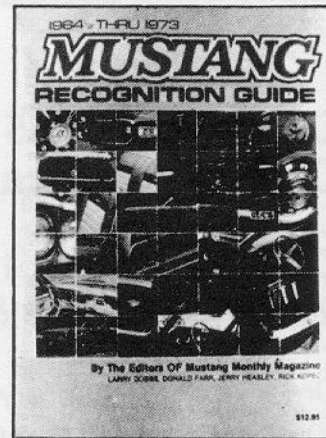
SHOP TIPS

Ford Parts Warehouse has reprinted 3 of Ford's Mustang-related SHOP TIPS publications. Volume 2, Number 4 is the special Mustang issue that introduced Mustang specifications to Ford service dealers. Volume 2, Number 2 (February 1964) describes the "Cobra Kits", and Volume 2, Number 6 includes a section on "Modifying Ford V-8s for High Performance". The superior quality reprints sell for \$4.50 each, PPD.



HOW TO RESTORE YOUR MUSTANG

1965-68 Covers each phase of restoration in detail 14.95



MUSTANG RECOGNITION GUIDE

Compiled by the editors of Mustang Monthly, over 300 photos in color 16.95

We also have a huge inventory of obsolete Ford Parts if you don't see it listed call or write (SASE) for availability and price. Send \$2.00 for our 72 page catalog of Ford and Mustang Parts. All parts are new unless noted. Please add 10% (\$2 minimum) for UPS except fenders, hoods and quarter panels will be shipped freight collect.

MasterCard and VISA accepted. Satisfaction guaranteed (30-day return)

FORD PARTS WAREHOUSE

Courthouse Square, Liberty, Ky. 42539

PH: 606-787-5031