

# THE FORD PARTS WAREHOUSE

## PARTS & ACCESSORIES

1965 Full wheel cover, 13" or 14" . . . . .	ea. \$ 20.00
1966 Full wheel cover . . . . .	ea. 22.50
Spinner & blue center for 1965-66 wire wheel cover . . . . .	ea. 24.50
1966 Trim ring for styled steel wheels . . . . .	24.50
1965-66 Red center for styled steel wheels . . . . .	17.00
1965-67 Lug nuts for styled steel wheels . . . . .	ea. 3.00
1967 Trim ring for styled steel wheels . . . . .	24.50
1967 Blue center for styled steel wheels . . . . .	10.00
1967 Full wheel cover . . . . .	20.00
1968 Full wheel cover (plain center) . . . . .	26.00
1968 Full wheel cover (red center) . . . . .	42.00
1968 Trim ring for styled steel wheels . . . . .	24.50
1966 Chrome Hi-Po air cleaner . . . . .	22.50
1965-66 GT exhaust trumpets . . . . .	pr. 125.00
1965-66 Chrome trim for GT trumpets . . . . .	ea. 14.00
1965-68 GT or std. rear valance, specify yr. . . . .	49.50
1965-66 Front bumper . . . . .	120.00
1965-66 Rear bumper . . . . .	120.00
1967-68 Front bumper . . . . .	110.00
1967-68 Rear bumper . . . . .	110.00
1965-68 Bumper guards (set of 4) . . . . .	73.00
1965-68 Front valance, specify year . . . . .	61.75
1965-66 Rocker panel molding . . . . .	ea. 54.00
1967-68 Rocker panel molding . . . . .	ea. 30.00
1965 Quarter panel ornament . . . . .	16.75
1966 Quarter panel ornament . . . . .	18.50
1965-66 Outside door handles . . . . .	ea. 16.65
1967-68 Outside door handles . . . . .	ea. 18.75
1965-66 Tail lamp bezels . . . . .	ea. 14.75
1967-68 Tail lamp bezels . . . . .	ea. 11.00
1965 Grille mesh, specify std. or GT . . . . .	54.75
1966 Grille . . . . .	80.50
1967 Grille . . . . .	67.00
1965-67 GT grille bars, specify year . . . . .	pr. 135.00
1965-67 Fog light assemblies . . . . .	ea. 61.60
1965 Grille ornament "Horse and Corral" . . . . .	58.00
1965 Grille bars, std. . . . .	ea. 22.00
1965-66 Fenders, specify year, side . . . . .	ea. 175.00
1965-68 Coupe quarter panels, specify yr. . . . .	190.00
1965-66 Convertible quarter panel . . . . .	190.00
1965-66 Fastback quarter panel . . . . .	475.00
1965-66 Dash bezel, specify yr. & type . . . . .	31.25
1967 Dash bezel, black . . . . .	26.45
1967 Dash bezel, brushed alum. . . . .	46.95
1968 Dash bezel, black . . . . .	46.95
1968 Dash bezel, woodgrain . . . . .	46.95
1965 Dash pads (black, red, blue) . . . . .	120.00
1966 Dash pads (black, burgundy, blue) . . . . .	120.00
1965-66 Armrest pads, specify yr., color . . . . .	ea. 18.00
1965-66 Chrome armrest bases . . . . .	ea. 14.00
1967-68 Armrest pads, specify yr., color . . . . .	ea. 25.00
1965-68 Fuel tank . . . . .	90.00
1965-66 Trunk mats, specify year, body type . . . . .	41.50
1965-66 Steering wheel, black . . . . .	78.00
1965-66 Horn ring for std. wheel . . . . .	56.00
1965-67 Horn ring for woodgrain wheel . . . . .	25.00
1965-66 Parking lamp assembly . . . . .	30.00
1967-68 Parking lamp assembly . . . . .	30.00
1965-66 Back-up lamp assy, specify year . . . . .	37.50
1965-66 Ign door lock set w/2 pony keys . . . . .	28.50
1965-68 Step plates (specify body type) . . . . .	pr. 28.00
1965-68 Accessory step lates (outer) . . . . .	pr. 46.00
Cobra alum. valve covers, 260-302 . . . . .	pr. 75.00
Cobra alum. valve covers, 351-428 . . . . .	pr. 110.00
1965-66 Hood . . . . .	225.00
1967-68 Hood (specify year) . . . . .	215.00
1965-66 Radiator (specify engine) . . . . .	175.00
1965-68 Luggage rack (except fastback) . . . . .	130.00
1967 Antenna kit . . . . .	60.00
1965-66 Door edge guard kits . . . . .	25.00
1967-68 Parking lamp assy. . . . .	27.60

## REPAIR PANELS

1965-66 Lower rear corner patch panel 7 1/2" height . . . . .	25.00
1965-70 Lower rear corner patch panel, 12" height, specify year . . . . .	33.00
1965-70 Rear wheel flair, specify year . . . . .	33.00
1965-70 Rear frame rail . . . . .	51.00
1965-66 Lower rear corner of front fender . . . . .	25.00
1967-68 Lower rear corner of front fender . . . . .	26.00
1965-70 Inner panel, lower rear qtr. . . . .	21.00
1965-68 Short frt. floor pan . . . . .	per side 44.00
1965-68 Long frt. floor pan . . . . .	per side 49.00
1965-68 Rear floor . . . . .	per side 49.00
1965-70 Inner rear wheel Hsg. . . . .	50.00
1965-68 Outer wheel Hsg. specify year . . . . .	59.00
1965-68 Conv. inner rocker panels . . . . .	65.00
1965-68 Conv. torque boxes . . . . .	66.00

## UPHOLSTERY 1965-68

(Specify Year and Color)

Complete set std. interior . . . . .	185.00
Front buckets only . . . . .	pr. 132.00
Complete set with bench front . . . . .	225.00
Complete set 65-66 "Pony" interior . . . . .	270.00
Front buckets only . . . . .	190.00
Door panels std. interior . . . . .	52.00
"Pony" door skins . . . . .	135.00

## MOLDED CARPET

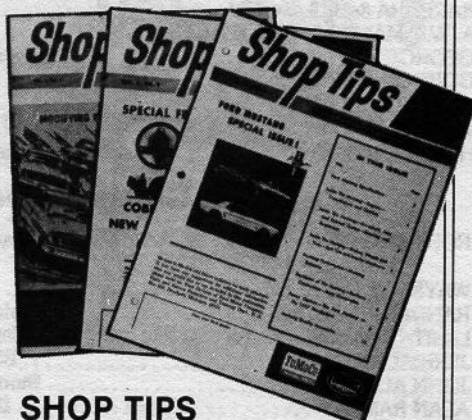
All carpets molded and trimmed to fit your car just like the original. No cutting or fitting required. Coupes, convertibles, fastbacks, without fold down area . . . . . 95.00  
Fastbacks with fold down area . . . . . 115.00

## ACCESSORY PONY MATS

Complete, set of four . . . . .	45.00
Fronts only . . . . .	30.00

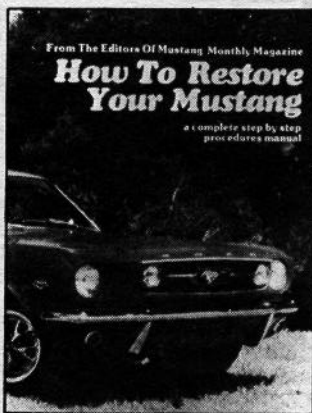
## SHOP MANUALS, LITERATURE, PARTS CATALOGS

'65-'68, '70-'73 Shop manuals . . . . .	25.00
'65-'73 Owners manuals . . . . .	6.00
Mustang Does It . . . . .	27.50
'65-'72 Genuine Ford parts catalogs, loose leaf, gives illustrations and part numbers . . . . .	60.00
1965-70 Factory Facts books, specify year . . . . .	4.95



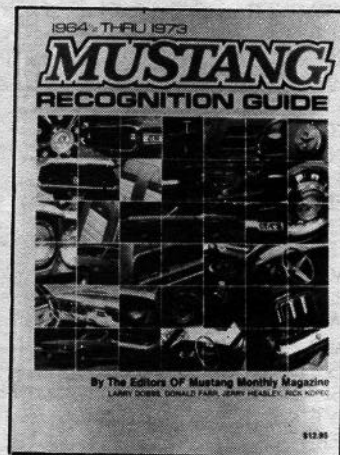
## SHOP TIPS

Ford Parts Warehouse has reprinted 3 of Ford's Mustang-related SHOP TIPS publications. Volume 2, Number 4 is the special Mustang issue that introduced Mustang specifications to Ford service dealers. Volume 2, Number 2 (February 1964) describes the "Cobra Kits", and Volume 2, Number 6 includes a section on "Modifying Ford V-8s for High Performance". The superior quality reprints sell for \$4.50 each, PPD.



## HOW TO RESTORE YOUR MUSTANG

1965-68 Covers each phase of restoration in detail . . . . . 14.95



## MUSTANG RECOGNITION GUIDE

Compiled by the editors of Mustang Monthly, over 300 photos in color . 16.95

We also have a huge inventory of obsolete Ford Parts if you don't see it listed call or write (SASE) for availability and price. Send \$2.00 for our 72 page catalog of Ford and Mustang Parts. All parts are new unless noted. Please add 10% (\$2 minimum) for UPS except fenders, hoods and quarter panels will be shipped freight collect.

MasterCard and VISA accepted. Satisfaction guaranteed (30-day return)

# FORD PARTS WAREHOUSE

Courthouse Square, Liberty, Ky. 42539

PH: 606-787-5031