

**DALLAS
MUSTANG
PARTS**

YOUR NUMBER ONE SOURCE

REGULAR CAPACITY RADIATOR Suitable for use with factory A/C. Twelve month guarantee. All two row core. Fits manual or automatic transmission. Please call for prices on models other than shown.
1965/66, V-8, 6-Cyl.115.00

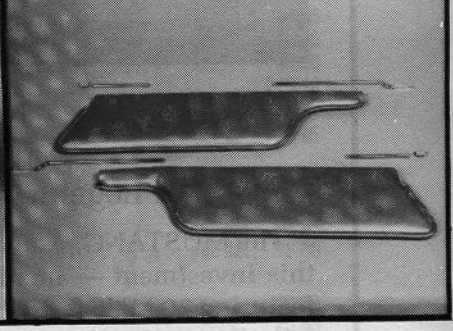
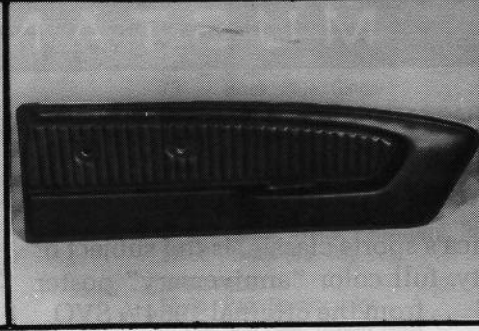
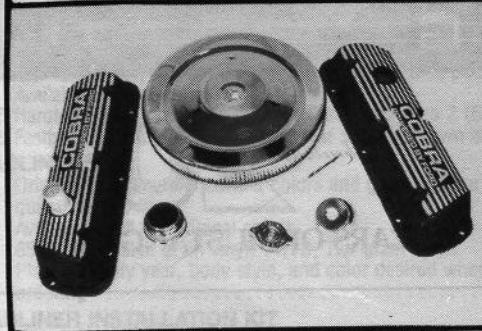
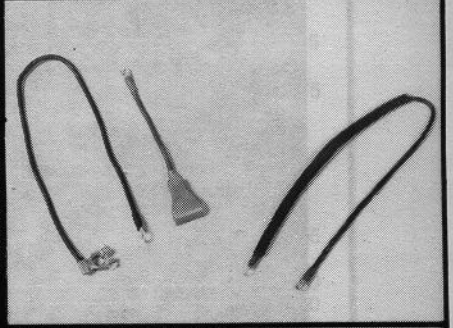
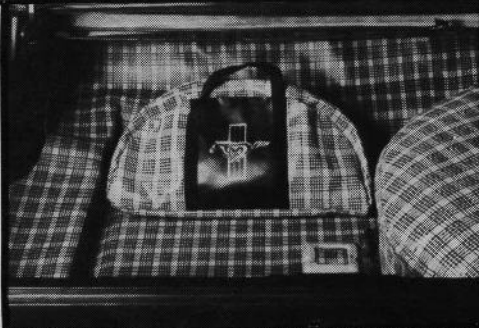
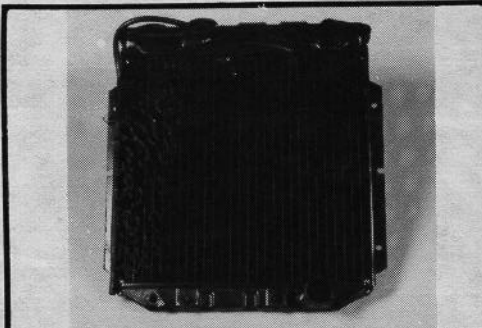
GADGET BAG Carries cleaning supplies, tools, parts, refreshments, etc. Made of trunk mat material and decorated with Mustang pony 16.95

REPRODUCTION TRUNK MAT
1965/70, Gray plaid F/B 19.95
1965/70, Gray plaid Cpe..... 19.95
1965/70, Gray plaid Cvt 19.95

REPRODUCTION TIRE COVER
1965/70, Gray plaid 12.95

JACK-PAC For jack and handle.
Matching material 4.95

BATTERY CABLE SET Exact reproduction of positive and negative battery cables and solenoid to starter cable.
1965/66, V-8 49.95
1965/66, 6-Cyl. 49.95
1967/69, V-8 and 6-Cyl. 49.95



ENGINE DRESS-UP KIT 8-Cyl. Kit includes 2 Cobra valve covers, chrome air cleaner, chrome oil filler cap, chrome radiator cap, chrome oil dip stick & chrome master cylinder cover.
1965/68, 260-289-302129.95

ALL-NEW PONY DOOR PANELS The finest reproduction you'll ever see. Available in Black, White, 65 Red, 66 Red, Parchment.
1965 Panels PAIR 149.95
1966 Panels PAIR 149.95
1967 Deluxe Door Panels PAIR 210.00

SUNVISORS Exact reproduction of the original available in all original colors
1965/68 PAIR 39.95

CONVERTIBLE SUNVISOR RODS
(4 pcs.) Chrome SET 14.95

SUNVISOR RUBBER TIPS EACH .75

ORDER INFORMATION

- VISA or Master Card
- Texas residents add 5% sales tax
- Exact freight charges on orders under \$150
- Prepaid over \$150
- Same day shipment UPS
- COD shipments
- All merchandise in stock
- Please specify color, make, year & model

Store Hours: Monday - Friday 8 AM - 5 PM

Saturday 8 AM - 2 PM

**9515 SKILLMAN STREET
DALLAS, TX 75243**

Your calls will be a

FOR CONCOURSE PARTS

**DALLAS
MUSTANG
PARTS**

PONY DOOR HANDLE WOOD GRAIN

KIT Die Cut, just like original
1965/66 PAIR 4.95

CAR COVERS-READY FIT

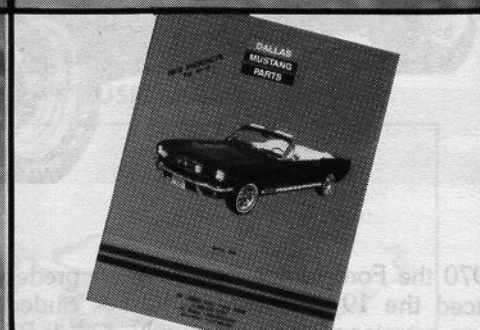
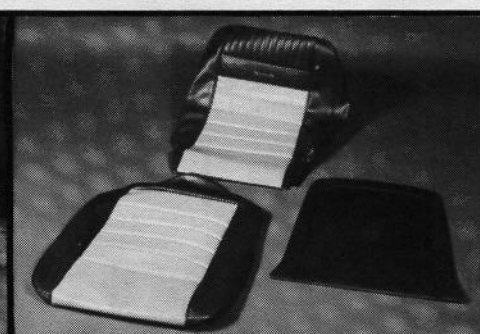
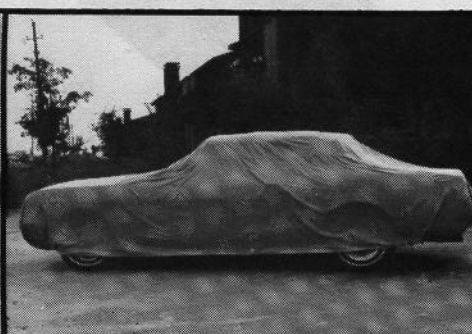
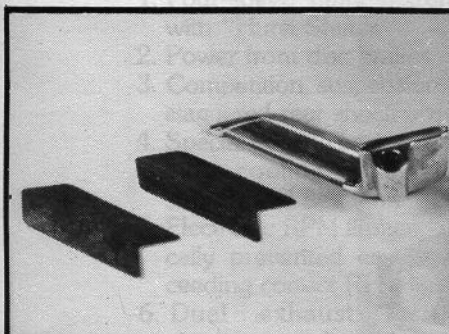
Fits over the entire car, bumper to bumper. Water repellent. Mildew resistant. Polyester/Cotton blend. Light green.
1965/70 Cpe. Cvt. F/B 79.95
1965/70/ Cpe. Cvt. F/B, Tan Flannel ... 109.95

SEAT UPHOLSTERY

Just like original. The best there is. Available in all original colors. Complete with covered back panels.
1965/68 Standard Seats
2 buckets & rear seat 189.95
2 buckets 134.95
1 bucket 69.95

1965/66 Deluxe Pony Seats

2 buckets & rear seat 244.95
2 buckets 159.95
1 bucket 89.95



GEAR SHIFT KNOBS

Exact reproduction of original. Compression Molded
1965/68, 3-speed w/base nut
thread size thread 1/2 x 20 29.95
1965/66, 4-speed w/base nut,
concave top 29.95
1967/68, 4-speed w/base nut,
flat top 29.95

SHIFT BOOT CHROME RETAINER

1965/68, Std. Trans. 15.95

MOLDED CARPET

The best available. No cutting or trimming required. Available in Black, Ford Blue, Aqua, Dark Green, Moss Green, Red, Maroon, Dark Brown, Saddle, Emberglow.
1964/68 Cpe. Cvt. F/B 99.50
F/B fold down area 10.00
1969/70, Carpets are 100% Nylon loop pile (same as original)
1969/70 (Specify color)
Cpe. Cvt. or F/B 99.50
F/B fold down area 10.00

NEW PRODUCTS CATALOGUE

Call 1-214-349-0991
to receive your FREE 68-page
DALLAS MUSTANG PARTS
catalogue.

answered by people who *know* Mustangs!

**ORDER TOLL-FREE
1-800-527-1223**

**IN TEXAS, CALL
1-800-442-1047**

**FOR INFORMATION
1-214-349-0991**