

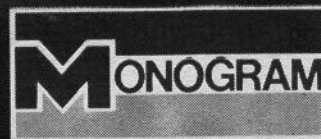
'85 Mustang SVO

1/24 Scale Plastic Model Kit.

Age: 10 through adult.



2243



Order Your 1985 Mustang Club of America Calendar Now!

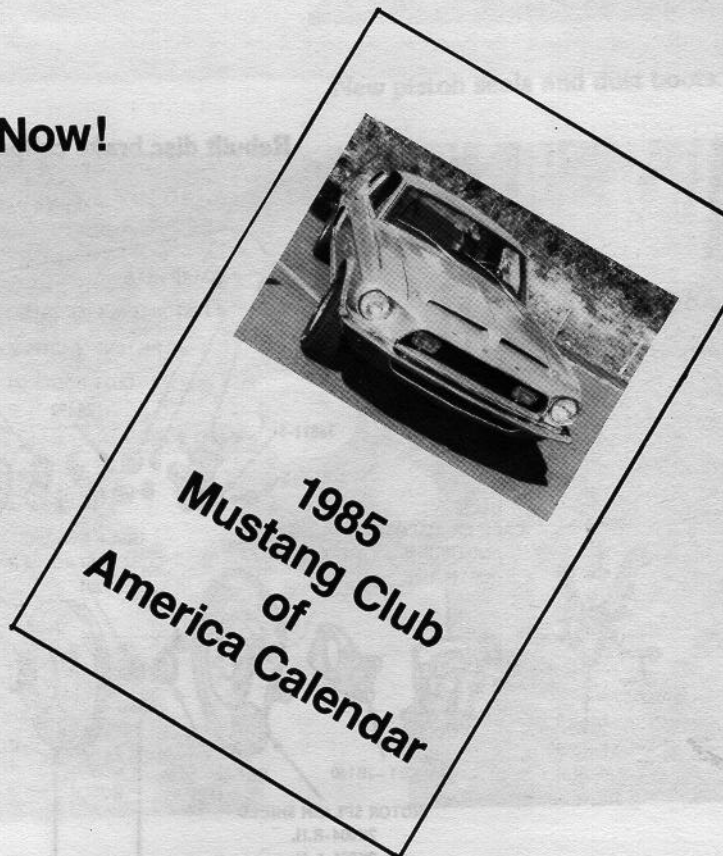
Calendar features 12 full-color Mustangs, Bosses & Shelby's

Order early to insure you get yours. Only 2000 copies available. Dealer inquiries welcomed.

\$4.50 each plus \$1.00 postage

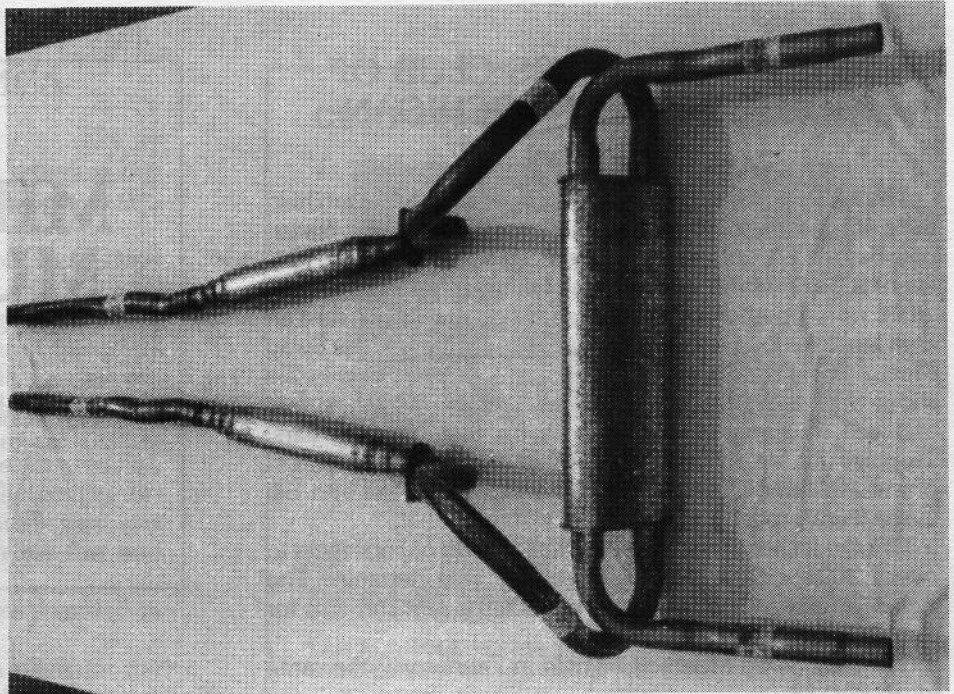
Send your order to:

Mustang Club of America
P.O. Box 447
Lithonia, Georgia 30058



'85 SVO MODEL

Mustang Classic Collections announces a new arrival. The 1985 Mustang SVO is one of the first '85 kits on the market. The Monogram 1/24 scale kit is molded in red. When completed, the model measures 7-9/16" long. Details include "bi-plane" rear wing, aerodynamic hood, contoured seats, suspension system, and alloy wheels with low profile tires. Hood opens to show engine detail. Price is \$6.50 each or two for \$12.00 (includes shipping). Kit can be ordered from Mustang Classic Collections, P.O. Box 539, Pine Lake, GA 30072-0539.



REPRO PARTS

Dallas Mustang Parts, Dallas, Texas, has recently purchased the manufacturing rights from Autoworks, Inc. of Des Moines, Iowa, to produce a variety of authentic Mustang parts reproductions. Parts include low profile Rally Pacs, '69-'70 rear window louvers and accessories, refurbishing of '65-'67 steering wheels with real black walnut wood, '67 Shelby underdash gauges, Shelby super-charger air cleaner assemblies, and C-4 Cobra transmission pans.

For additional information contact Dallas Mustang Parts at: 1-800-527-1223 (Nationwide), 1-800-442-1047 (in Texas), 214-349-0991 (Dallas area).

Products listed in NEW PRODUCTS are those which the Mustang Times Staff feel are of interest to Mustang Club of America members. All specifications or claims are supplied by the manufacturers or sellers, who bear responsibility for their accuracy. This listing is provided as a free service, and Mustang products vendors are invited to submit information and black and white photos for consideration.

NOS DUAL EXHAUSTS

The original manufacturer of Mustang/Boss/Shelby dual exhaust systems for 1967-70 is producing a limited quantity of these systems to exact specifications. The system, for engine sizes 289, 302, 351, 390, 427, 428, 428CJ, 302 Boss, and 429 Boss, includes 2 intermediate pipes with resonators, 2 tail pipes, and 1 transverse muffler.

These systems are priced at \$298. For more information, call or write N.O.S. Unlimited, P.O. Box 308, Palatine, IL 60078 (312) 359-0124.



• PERFORMANCE PARTS / BUY, SELL and TRADE
• MUSTANGS PARTS

Snakeman
Enterprises

Harvard Still
Contact "Snakeman"

615/479-7314 • RT. 9 BOX 588 • CLEVELAND, TENNESSEE 37311

RESTORATIONS • REPAIRS •
DETAILING • MODIFICATION

**64½ - 73 MUSTANGS
SHELBYs**

CARS & PARTS
BOUGHT • SOLD • TRADED

LEE MATHIAS
3853 MOON STATION RD.
KENNESAW, GA 30144
(404) 427-0382



MUSTANG FARM

Hours
Mon.-Fri. 9-6
Sat. 9-4