

FORMERLY THE THE FORD PARTS WAREHOUSE

PARTS & ACCESSORIES

1965 Full wheel cover 14"ea. \$	26.00
1966 Full wheel coverea.	26.75
Spinner & blue center for 1965-66 wire wheel coverea.	24.50
1966 Trim ring for styled steel wheels	24.50
1965-66 Red center for styled steel wheels	17.00
1965-67 Lug nuts for styled steel wheelsea.	3.00
1967 Trim ring for styled steel wheels	24.50
1967 Blue center for styled steel wheels	11.50
1967 Full wheel cover	24.00
1968 Full wheel cover (plain center)	30.00
1968 Full wheel cover (red center)	48.00
1968 Trim ring for styled steel wheels	24.50
1966 Chrome Hi-Po air cleaner	22.50
1965-66 GT exhaust trumpetspr.	125.00
1965-66 Chrome trim for GT trumpetsea.	16.00
1965-68 GT or std. rear valance, specify yr.	58.00
1965-66 Front bumper	120.00
1965-66 Rear bumper	120.00
1967-68 Front bumper	120.00
1967-68 Rear bumper	120.00
1965-66 Bumper guards (set of 4)	87.00
1965-68 Front valance, specify year	72.00
1965-66 Rocker panel moldingea.	60.00
1967-68 Rocker panel moldingea.	39.00
1965 Quarter panel ornament	19.90
1966 Quarter panel ornament	21.90
1965-66 Outside door handlesea.	19.00
1967-68 Outside door handlesea.	21.50
1965-66 Tail lamp bezelsea.	17.25
1967-68 Tail lamp bezelsea.	12.50
1965 Grille mesh, specify std. or GT	68.50
1966 Grille	95.00
1967 Grille	72.00
1965-67 GT grille bars, specify yearpr.	135.00
1965-67 Fog light assembliesea.	61.60
1965 Grille ornament "Horse and Corral"	68.75
1965 Grille bars, std.ea.	26.00
1965-66 Fenders, specify year, sideea.	200.00
1965-68 Coupe quarter panels, specify yr.	190.00
1965-66 Convertible quarter panel	190.00
1965-66 Fastback quarter panel	250.00
1965-66 Dash bezel, woodgrain finish	46.00
1967 Dash bezel, black	56.00
1967 Dash bezel, brushed alum.	56.00
1968 Dash bezel, black	56.00
1968 Dash bezel, woodgrain	56.00
1965 Dash pads (black, red, blue)	140.00
1966 Dash pads (black, burgundy, blue)	140.00
1965-66 Armrest pads, specify yr., colorea.	20.00
1965-66 Chrome armrest basesea.	16.00
1967-68 Armrest pads, specify yr., colorea.	27.00
1965-68 Fuel tank	90.00
1965-66 Trunk mats, specify yr., body type	45.00
1965-66 Steering wheel, black	78.00
1965-66 Horn ring for std. wheel	56.00
1965-67 Horn ring for woodgrain wheel	31.00
1965-66 Parking lamp assembly	35.00
1967-68 Parking lamp assembly	35.00
1965-66 Back-up lamp assy, specify yr.	42.00
1965-66 Ign door lock set w/2 pony keys	32.00
1965-66 Step plates (specify body type)pr.	38.00
1965-68 Accessory step lates (outer)pr.	46.00
Cobra alum. valve covers, 260-302pr.	75.00
Cobra alum. valve covers, 351-428pr.	110.00
1965-66 Hood	250.00
1967-68 Hood (specify year)	225.00
1965-66 Radiator (specify engine)	165.00
1965-68 Luggage rack (except fastback)	145.00
1967 Antenna kit	60.00
1965-66 Door edge guard kits	25.00

REPAIR PANELS

1965-66 Lower rear corner patch panel 7 1/2" height	22.00
1965-70 Lower rear corner patch panel, 12" height, specify year	31.00
1965-70 Rear wheel flair, specify yr.	36.00
1965-70 Rear frame rail	49.00
1965-66 Lower rear corner of front fender	27.00
1967-68 Lower rear corner of front fender	28.50
1965-70 Inner panel, lower rear qtr.	20.00
1965-68 Short frt. floor panper side	48.50
1965-68 Long frt. floor panper side	54.00
1965-68 Rear floorper side	54.00
1965-70 Inner rear wheel Hsg.	65.00
1965-68 Outer wheel Hsg. specify ye.	65.00
1965-68 Conv. inner rocker panels	60.00
1965-68 Conv. torque boxes	65.00

UPHOLSTERY 1965-68 (Specify Year and Color)

Complete set std. interior	185.00
Front buckets onlypr.	132.00
Complete set with bench front	225.00
Complete set 65-66 "Pony" interior	270.00
Front buckets only	190.00
Door panels std. interior	52.00
"Pony" door skins	135.00

MOLDED CARPET

All carpets molded and trimmed to fit your car just like the original. No cutting or fitting required.

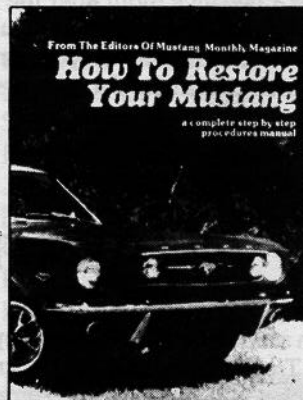
Coupes, convertibles, fastbacks, without fold down area	95.00
Fastbacks with fold down area	115.00

ACCESSORY PONY MATS

Complete, set of four	45.00
Fronts only	30.00

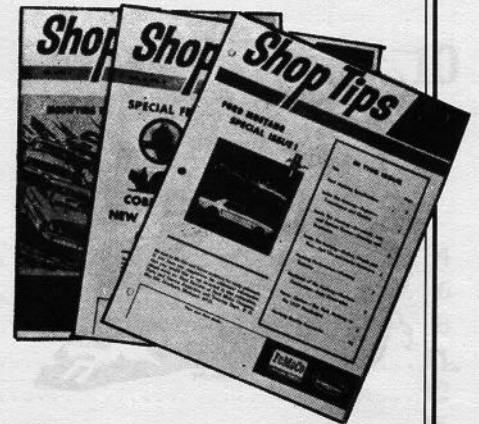
SHOP MANUALS, LITERATURE, PARTS CATALOGS

'65-'68, '70-'73 Shop manuals	25.00
'65-'73 Owners manuals	6.00
Mustang Does It	27.50
'65-'72 Genuine Ford parts catalogs, loose leaf, gives illustrations and part numbers	60.00
1965-70 Factory Facts books, specify yr.	4.95



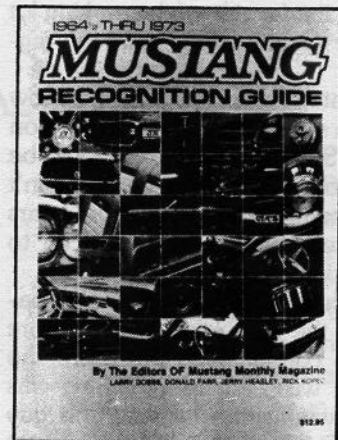
HOW TO RESTORE YOUR MUSTANG

1965-68 Covers each phase of
restoration in detail \$14.95



SHOP TIPS

Ford Parts Warehouse has reprinted 3 of Ford's Mustang-related SHOP TIPS publications. Volume 2, Number 4 is the special Mustang issue that introduced Mustang specifications to Ford service dealers. Volume 2, Number 2 (February 1964) describes the "Cobra Kits", and Volume 2, Number 6 includes a section on "Modifying Ford V-8s for High Performance". The superior quality reprints sell for \$4.50 each, PPD.



MUSTANG RECOGNITION GUIDE

Compiled by the editors of Mustang Monthly, over
300 photos in color \$16.95

We also have a huge inventory of obsolete Ford Parts. If you don't see it listed call or write (SASE) for availability and price. Send \$2.00 for our 72-page catalog of Ford and Mustang Parts. All parts are new unless noted. Please add 10% (\$2 minimum) for UPS except fenders, hoods and quarter panels will be shipped freight collect.

MasterCard and VISA accepted. Satisfaction guaranteed (30-day return)

DALE KING

Courthouse Square, Liberty, KY 42539

PH: 606-787-5031